

ROOFTOP HVAC UNITS

MODEL (LIPPERT PN)

FACR13SA-PS (NOT AVAILABLE) FACR13SA-BL (2021132278)

FACR14SA-PS (2021123613) FACR14SA-BL (2021123563)

FACR15SA-PS (2021123799) FACR15SA-BL (2021123630)

FACR13SA-BL-AM (2021124541) FACR13SA-PS-AM (2021124533)

FACR14SA-BL-AM (2021123707) FACR14SA-PS-AM (2021123705)

FACR15SA-BL-AM (2021123708) FACR15SA-PS-AM (2021123793)

FACR13HESA-BL (2021130013) FACR13HESA-PS (2021132276)

FACR15HESA-BL (2021130010) FACR15HESA-PS (2021130009)

FACR13HESA-BL-AM (2021130012) FACR13HESA-PS-AM (2021130014)

FACR15HESA-BL-AM (2021130008) FACR15HESA-PS-AM (2021130011)

TROUBLESHOOTING AND SERVICE MANUAL



* Picture shown here is for reference only.

This manual contains the product's basic information, safety, maintenance, replaceable parts, fault diagnosis and basic troubleshooting procedures.

TABLE OF CONTENTS

| | |
|----------------------------------|---|
| Introduction | 2 |
| Safety | 2 |
| Precautions/Warnings | 3 |
| National Codes | 3 |
| USA | 3 |
| Canada | 3 |
| Handling the Device | 3 |
| Cleaning and Maintenance | 4 |
| To Clean the Filter | 4 |
| To Replace the Filter | 5 |
| Replaceable Parts List | 5 |
| Troubleshooting | 7 |
| Specifications | 7 |
| Wiring Diagram | 8 |
| Multi Zone Wiring Diagram | 9 |

Introduction

This document provides an overview on replaceable parts for Furrion® RV Air Conditioners, as well as basic troubleshooting and service information.

NOTE: Images used in this document are for reference only when assembling, installing and/or operating this product. Actual appearance of provided and/or purchased parts and assemblies may differ. For more detailed operation, including general safety instructions, warnings and cautions, see Instruction Manuals at:

For FACR13SA-PS/-BL systems with Electronic Control Air Distribution Box (CCD-0005590): <https://support.lci1.com/documents/furrion-chill-rooftop-air-conditioner-instruction-manual-im-fha00024-v2.0>

For all other models with Electronic Control Air Distribution Box (CCD-0005773): <https://support.lci1.com/documents/furrion-chill-rooftop-air-conditioner-with-electronic-control-im-fha00090-v2.0>

For FACR13SA-PS/-BL systems with Manual Control Air Distribution Box (CCD-0005601): <https://support.lci1.com/documents/furrion-chill-rooftop-air-conditioner-instruction-manual-im-fha00033-v3.0>

For all other models with Manual Control Air Distribution Box: (CCD-0005730): <https://support.lci1.com/documents/furrion-chill-rooftop-air-conditioner-with-manual-control-im-fha00091-v2.0>

or scan the QR codes below:



CCD-0005590



CCD-0005773



CCD-0005601



CCD-0005730

Safety

Read and understand all instructions before installing or operating this product. Adhere to all safety labels.

This manual provides general instructions. Many variables can change the circumstances of the instructions, i.e., the degree of difficulty, operation and ability of the individual performing the instructions. This manual cannot begin to plot out instructions for every possibility, but provides the general instructions, as necessary, for effectively interfacing with the device, product or system. Failure to correctly follow the provided instructions may result in death, serious personal injury, severe product and/or property damage, including voiding of the Lippert limited warranty.

WARNING

The "WARNING" symbol above is a sign that a procedure has a safety risk involved and may cause death or serious personal injury if not performed safely and within the parameters set forth in this manual.

WARNING

Failure to follow instructions provided in this manual may result in death, serious personal injury and/or severe product and property damage, including voiding of the component warranty.

CAUTION

The "CAUTION" symbol above is a sign that a safety risk is involved and may cause personal injury and/or product or property damage if not safely adhered to and within the parameters set forth in this manual.

CAUTION

Always wear eye protection when performing service, maintenance or installation procedures. Other safety equipment to consider would be hearing protection, gloves and possibly a full face shield, depending on the nature of the task.

Precautions/Warnings

National Codes

All Furrion® product referenced in this manual is to be installed in accordance with local and national codes, including the latest editions of the following standards:

USA

- NFPA 1192
- NFPA 70

Canada

- C22.1
- CSA Z240

Handling the Device

WARNING

- Installation and repair of the rooftop air conditioner must only be carried out by qualified personnel who are familiar with the risks involved and the relevant regulations. Inadequate repairs may cause serious hazards.
- Electrical devices are not toys. Keep electrical devices out of reach of children or elderly persons. Do not allow them to use electrical devices without supervision.
- Prevent inexperienced people from using the device without supervision.
- Do not undo the upper cover of the rooftop air conditioner in the event of a fire. Use approved extinguishing agents instead. Do not use water to extinguish fires.

⚠ CAUTION

- The rooftop air conditioner must be installed securely so that it cannot fall down.
- Only operate the rooftop air conditioner if you are certain that the housing and the cables are not damaged.
- Do not use the rooftop air conditioner near flammable fluids or in closed rooms.
- Make sure no combustible objects are stored or installed near the air outlet. A distance of at least 20" must be kept.
- Do not reach into air outlets or insert any foreign objects into the device.

Only use the device as intended.

Do not make any alterations or conversions to the device.

If faults occur in the refrigerant circuit, the system must be checked by a certified service technician and repaired properly. The refrigerant must never be released into the air.

Cleaning and Maintenance

A blocked filter will impair the cooling and heating performance of the unit significantly.

The filter must be cleaned periodically to ensure that it does not become clogged with dust and other particles.

The state of the filter can be ascertained from its appearance. If it appears dirty or clogged then it should be cleaned.

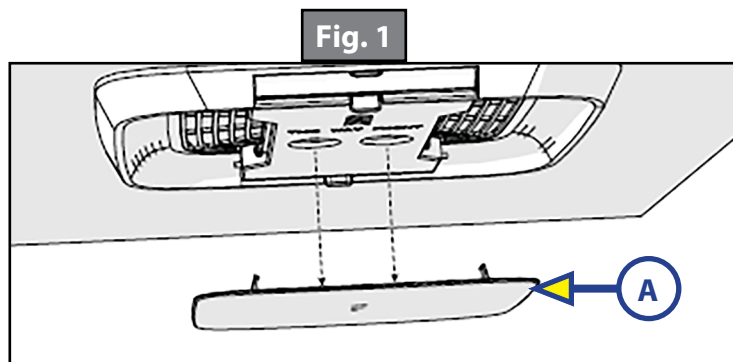
⚠ WARNING

Airborne particles can pose a health risk, particularly to young children and the elderly. Ensure that filters are cleaned in a safe and well ventilated area.

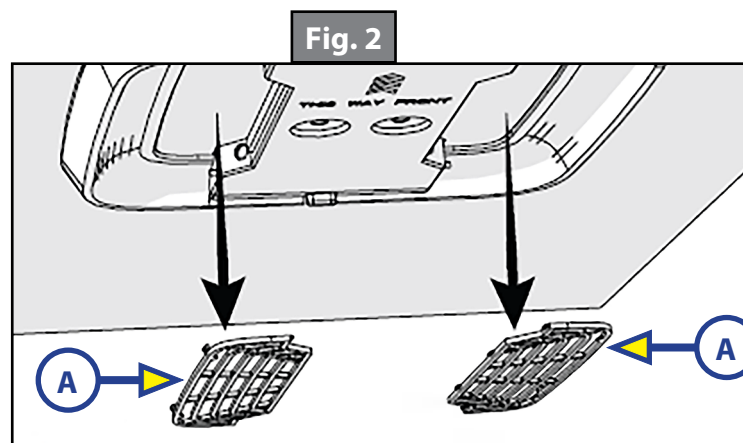
To Clean the Filter

The filter should be cleaned every four weeks or more when in use. Prolonged use, higher concentrations of airborne particles and various other factors may result in the filters needing to be cleaned more often.

1. Remove the decoration plate (Fig. 1A) from the air conditioning system by pushing the side tabs to release.



2. Remove the filters (Fig. 2A) by pushing the tabs to release.



3. The filter can be washed with warm soapy water. Care must be taken to avoid ripping the fabric.
4. Replace the filters and decoration plate, by reversing the above process.

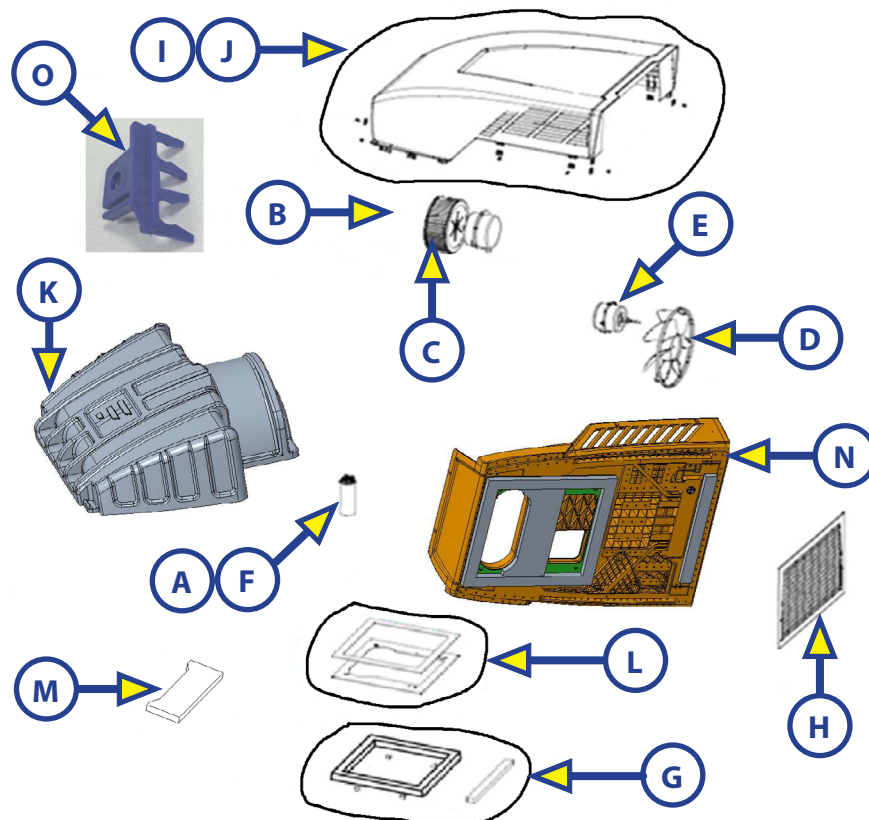
NOTE: The filter must be completely dry before re-installation.

To Replace the Filter

Filter changes should be carried out depending on the amount of use, it is recommended to change at least every 12 months. Never operate the air conditioning system without a filter, since this can decrease performance and indoor air quality.

Replacement return air filters can be ordered directly from Furrion®.

Replaceable Parts List



| Callout | Part # | Description | Model |
|---------|----------------------------|---------------------------------|--|
| A | 2021123988 | Capacitor for Chill with LG | FACR14SA-PS FACR14SA-BL FACR14SA-PS/BL-AM |
| | 2022301830 | Capacitor for Chill with non LG | FACR13SA-PS/BL FACR13SA-PS/BL-AM FACR15SA-PS/BL FACR15SA-PS/BL-AM FACR13HESA-PS/BL FACR13HESA-PS/BL-AM FACR15HESA-PS/BL FACR15HESA-PS/BL-AM |
| B | 2021123941 | Evaporator Fan Impeller | All |

| Callout | Part # | Description | Model |
|---------|----------------------------|--|---|
| C | 2021123951 | Evaporator Fan Motor | FACR13SA-PS/BL FACR13SA-PS/BL-AM FACR14SA-PS/BL FACR14SA-PS/BL-AM FACR15SA-PS/BL FACR15SA-PS/BL-AM FACR13HESA-PS/BL FACR13HESA-PS/BL-AM |
| | 2022323751 | Evaporator Fan Motor (15HESA) | FACR15HESA-PS/BL FACR15HESA-PS/BL-AM |
| D | 2021123929 | Condenser Fan Impeller | All |
| E | 2021124350 | Condenser Fan Motor | All |
| F | 2021124557 | Strat Capacitor – 15.5KBTU | FACR15SA |
| | 2022323753 | Strat Capacitor -13HESA | FACR13HESA-PS/BL FACR13HESA-PS/BL-AM |
| G | 2021124405 | Roof Gasket(#2) + 4 Indicators(#12) + Leveling shim(#13) | All |
| H | 2021124049 | Rear Grille | All |
| I | 2021124500 | Aircon Shroud (Black) + 8 Clip Nut + 10 Screw | FACR13SA-BL FACR14SA-BL FACR15SA-BL FACR13SA-BL-AM FACR14SA-BL-AM FACR15SA-BL-AM FACR13HESA-BL FACR13HESA-BL-AM FACR15HESA-BL FACR15HESA-BL-AM |
| | 2021128863 | Aircon Shroud (White)+ 8 Clip Nut + 10 Screw | FACR13SA-PS FACR14SA-PS FACR15SA-PS FACR13SA-PS-AM FACR14SA-PS-AM FACR15SA-PS-AM FACR13HESA-PS FACR13HESA-PS-AM FACR15HESA-PS FACR15HESA-PS-AM |
| J | 2021124358 | Strengthen Metal Plate(#10) + Gasket(#9) | All |
| K | 2023032406 | EPP Top Cover of Evaporator | All |
| M | 2023057417 | Middle Partition Gasket | All |
| N | 2024030606 | Furrion® Chill Bottom Base Assembly Kit | All |
| O | 2024113412 | Freeze Sensor Clip | All |

Troubleshooting

| Problem | Cause | Remedy |
|--|--|--|
| Rooftop air conditioner Abnormal shutdown | Freeze sensor has tripped. | Outer temperature is too low or all air nozzles are closed. |
| Rooftop air conditioner Abnormal shutdown | Freeze sensor has tripped. | Outer temperature is too low or all air nozzles are closed |
| Not cool enough | Refrigerant leakage | Contact an authorized service agent or Furrion (see the detail contact info at the back page of this manual). |
| | The rooftop air conditioner is not set to cooling. | Set the rooftop air conditioner to cooling. |
| | The set temperature is too high. | Select a lower temperature. |
| | The evaporator fan is damaged. | Contact an authorized service agent or Furrion® (see the detail contact info at the back page of this manual). |
| | The condenser fan is damaged. | Contact an authorized service agent or Furrion® (see the detail contact info at the back page of this manual). |
| | The air intake grilles are blocked or obstructed. | Remove any leaves and other dirt from the ventilation grilles of the rooftop air conditioner. |
| | The blower is defective. | Contact an authorized service agent or Furrion® (see the detail contact info at the back page of this manual). |
| Water enters the vehicle | The condensation water drainage openings are clogged up. | Clean the drainage openings for condensation water. |
| | The seals are damaged. | Contact an authorized service agent or Furrion® (see the detail contact info at the back page of this manual). |
| Rooftop air conditioner does not switch on | No supply voltage connected. | Check the power supply. |
| | The voltage is too low. | Contact an authorized service agent or Furrion® (see the detail contact info at the back page of this manual). |
| | Fuse blown or circuit protector tripped. | Check the electrical fuse of the power supply. |

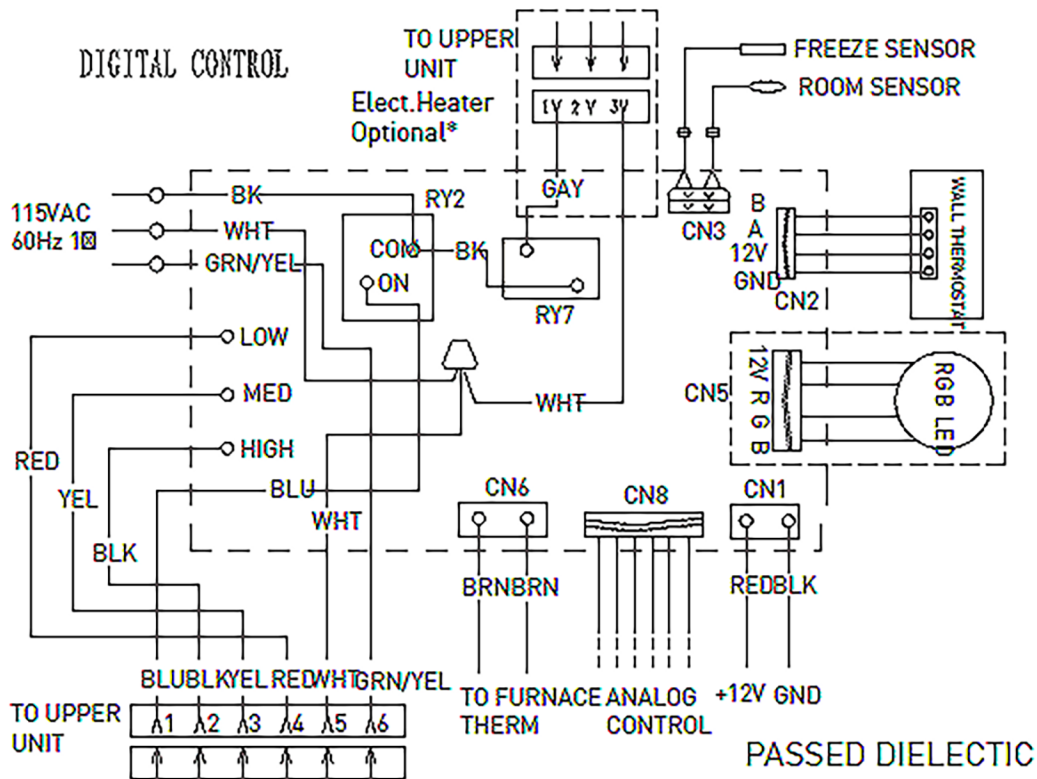
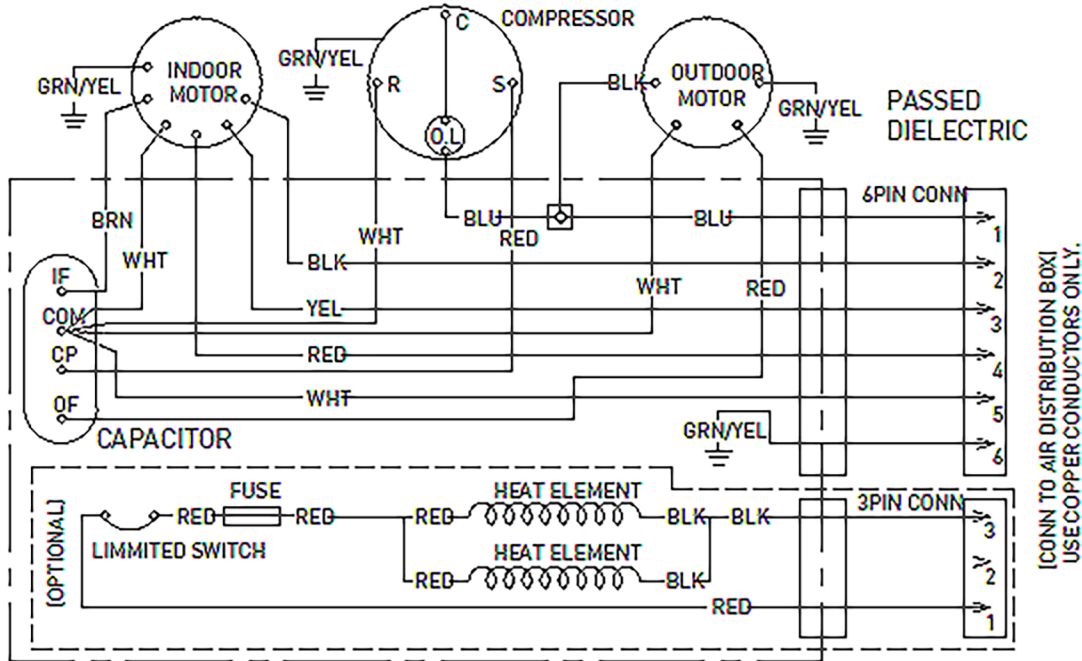
Specifications

| Model Number | FACR13SA-PS FACR13SA-BL | FACR13HESA-BL FACR13HESA-BL-AM | FACR14SA-PS FACR14SA-BL-AM | FACR15SA-PS FACR15SA-BL-AM | FACR15HESA-BL FACR15HESA-BL-AM |
|---|-----------------------------|-----------------------------------|-------------------------------|-------------------------------|-----------------------------------|
| Cooling Capacity (Btu/h) | 13,500 | 13,500 | 14,500 | 15,500 | 15,500 |
| Dehumidification (pint/h) | 2.5 | 1.8 | 2.7 | 3.2 | 3.0 |
| Applicable vehicle length (feet) | 23 | 23 | 26 | 31 | 31 |
| Refrigerant | R410A | R410A | R410A | R410A | R410A |
| Charge (Oz) | 15.9 | 13.9 | 19.8 | 23.1 | 20.8 |
| Roof top Unit Dimensions (L x W x H) (inch) | 34-7/8" x 27-5/8" x 13-5/8" | 34-7/8" x 27-5/8" x 13-5/8" | 34-7/8" x 27-5/8" x 13-5/8" | 34-7/8" x 27-5/8" x 13-5/8" | 34-7/8" x 27-5/8" x 13-5/8" |
| ELECTRICAL | | | | | |
| Volts/Frequency | 115V~/60Hz/1Ph | 115V~/60Hz/1Ph | 115V~/60Hz/1Ph | 115V~/60Hz/1Ph | 115V~/60Hz/1Ph |
| Power Watts (Cooling) | 1450 | 1283 | 1620 | 1720 | 1760 |
| Amps (Cooling) | 13.1 | 11.3 | 14.6 | 15.4 | 15.6 |
| Power Cord Gauge Min. (mm2) | AWG12 | AWG12 | AWG12 | AWG12 | AWG12 |

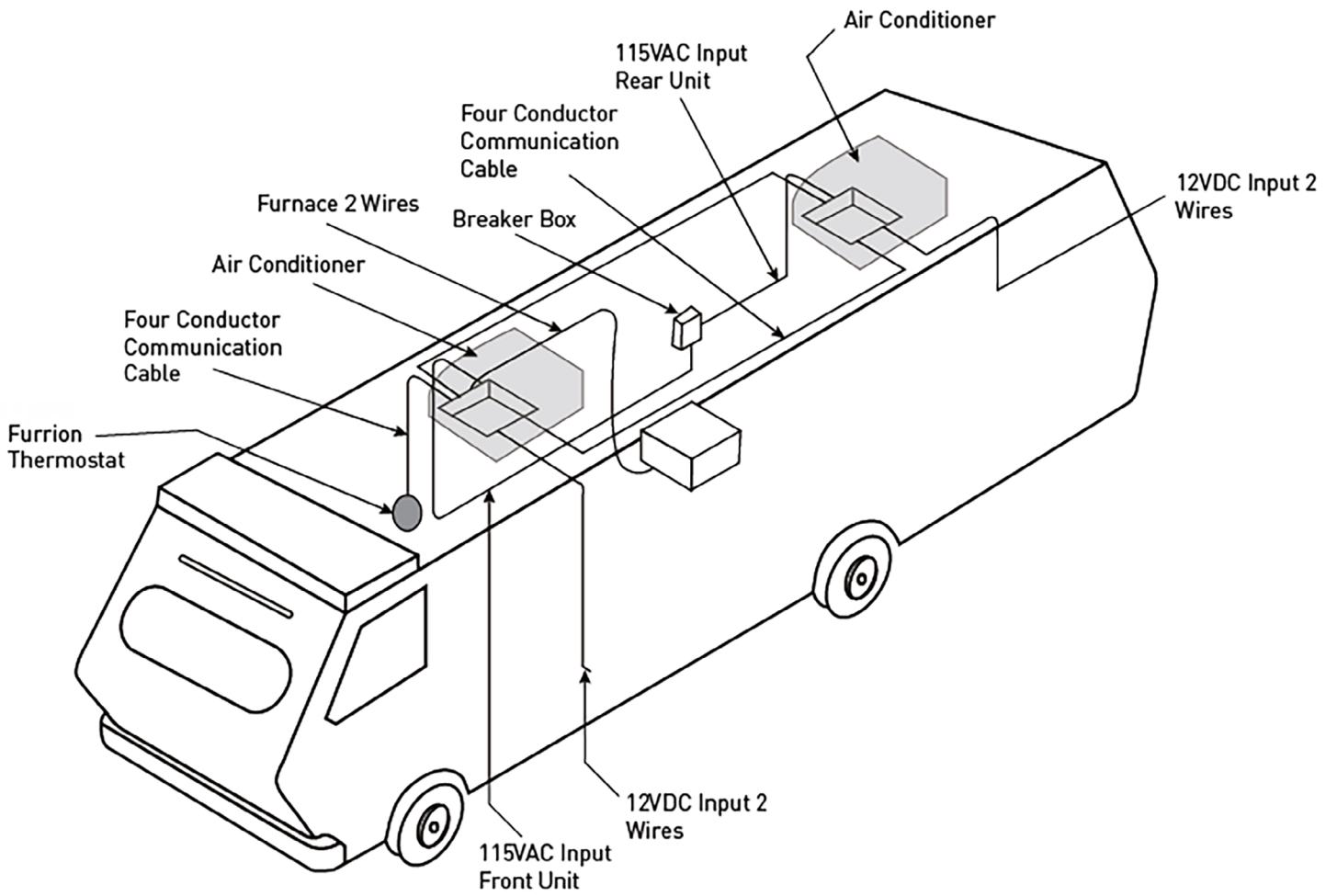
Wiring Diagram



- Disconnect power before servicing. Failure to obey this warning could result in death or serious injury.
- Provide grounding in compliance with all applicable electrical codes. Failure to obey this warning could result in death or serious injury.



Multi Zone Wiring Diagram





FURRION®

Furrion, LLC (Furrion) are wholly owned subsidiaries of Lippert Components, Inc. (Lippert)
Furrion, LLC (Furrion) sont des filiales en propriété exclusive de Lippert Components, Inc. (Lippert)
Furrion, LLC: 52567 Independence Ct., Elkhart, IN, 46514

Furrion Innovation Center & Institute of Technology
Centre d'innovation et institut de technologie Furrion
22244 Innovation Drive, Elkhart, IN 46514-5514, USA
Toll free/Numéro gratuit/Línea telefónica gratuita: 1-800-789-3341
Email/Courriel/Correo electrónico: customerservice@lci1.com

©2007-2025 Furrion, LLC. All rights reserved.

©2007-2025 Furrion, LLC. Tous droits réservés.

For Patent Info: www.Lippert.com/patents

Pour des informations sur les brevets: www.Lippert.com/patents

SUPPORT.LCI1.COM/FURRION



The contents of this manual are proprietary and copyright protected by Lippert. Lippert prohibits the copying or dissemination of portions of this manual unless prior written consent from an authorized Lippert representative has been provided.

Any unauthorized use shall void any applicable warranty.

The information contained in this manual is subject to change without notice and at the sole discretion of Lippert. Revised editions are available for free download from lippert.com.

Please recycle all obsolete materials.

Les renseignements contenus dans le présent manuel peuvent seulement être distribués sous forme de document complet, à moins de recevoir l'approbation explicite de Lippert Components pour distribuer des parties individuelles. Tous les renseignements contenus dans le présent manuel peuvent être modifiés sans préavis. Les éditions révisées pourront être téléchargées gratuitement sur le site lci1.com. Ces renseignements sont considérés comme étant factuels jusqu'à ce qu'une version révisée les rende désuets.

Veillez recycler tout le matériel désuet.

For all concerns or questions, please contact Lippert.

Communiquer avec Lippert Components si vous avez des questions ou des préoccupations.
Ph: 432-LIPPERT (432-547-7378) | Web: lippert.com | Email: customerservice@lci1.com