

17D" and 21D" DIGITAL GAS RANGE

MODEL (LIPPERT PN)

CF-RV17-D (2022302025) CF-RV17BB-D (2022302060)

CF-RV21-D (2022451491) CF-RV21B-D1 (2022302067)

CF-RV21-D1 (2022302068)

TROUBLESHOOTING AND SERVICE MANUAL



* Picture shown here is for reference only.

This manual contains the product's basic information, safety, maintenance, replaceable parts, fault diagnosis and basic troubleshooting procedures.

TABLE OF CONTENTS

Introduction	2
Safety	2
Safety Precautions	3
What to do if you smell gas:	3
Safety Instructions	3
Precautions to Avoid Possible Exposure to Gas or Electrical Hazards	4
Gas Connection Instructions	4
Electrical Connection Instructions	5
Cleaning and Maintenance	5
Spare Parts List	6
Troubleshooting	7
Specifications	7

Introduction

This document provides an overview on replaceable parts for Furrion® Greystone® 17D" and 21D" Digital Gas Range, as well as basic troubleshooting and service information.

NOTE: Images used in this document are for reference only when assembling, installing and/or operating this product. Actual appearance of provided and/or purchased parts and assemblies may differ. For more detailed operation, including general safety instructions, warnings and cautions, see Instruction Manual at: <https://support.lci1.com/documents/ccd-0009625> or scan this QR code:



Safety

Read and understand all instructions before installing or operating this product. Adhere to all safety labels.

This manual provides general instructions. Many variables can change the circumstances of the instructions, i.e., the degree of difficulty, operation and ability of the individual performing the instructions. This manual cannot begin to plot out instructions for every possibility, but provides the general instructions, as necessary, for effectively interfacing with the device, product or system. Failure to correctly follow the provided instructions may result in death, serious personal injury, severe product and/or property damage, including voiding of the Lippert limited warranty.

WARNING

The "WARNING" symbol above is a sign that a procedure has a safety risk involved and may cause death or serious personal injury if not performed safely and within the parameters set forth in this manual.

WARNING

Failure to follow instructions provided in this manual may result in death, serious personal injury and/or severe product and property damage, including voiding of the component warranty.

CAUTION

The "CAUTION" symbol above is a sign that a safety risk is involved and may cause personal injury and/or product or property damage if not safely adhered to and within the parameters set forth in this manual.

CAUTION

Always wear eye protection when performing service, maintenance or installation procedures. Other safety equipment to consider would be hearing protection, gloves and possibly a full face shield, depending on the nature of the task.

Safety Precautions

WARNING

If the instructions in this manual are not followed exactly, a fire or explosion may result causing property damage, personal injury or death.

Do NOT store or use gasoline or other flammable vapors or liquids near this or any appliance.

What to do if you smell gas:

- Do NOT try and light any appliance.
- Do NOT touch any electrical switch.
- Do NOT use any phone in your recreational vehicle.
- Clear the recreational vehicle of all occupants.
- Turn off gas supply tank valve(s) or main gas supply.
- From a safe distance from the gas smell, immediately call your gas supplier for instructions.
- If you cannot reach your gas supplier, call the fire department.
- Have a gas system checked and leakage source corrected by a qualified installer, service agency, manufacturer of dealer or the gas supplier.

Follow all instructions before using this appliance to prevent the potential risk of fire, electric shock, personal injury or damage to the appliance as a result of improper usage of the appliance. Use appliance only for its intended purpose as described in this guide.

If an external electrical source is utilized, the appliance must be electrically grounded in accordance with state or other codes or, in the absence of such codes, with the National Electrical Code (AN51/NFPA70). Do not attempt to adjust, repair, service, or replace any part of your appliance unless it is specifically recommended in this guide. Other services should be referred to a qualified service technician.

Warning and important safety instructions appearing in this guide are not meant to cover all possible conditions and situations that may occur. Common sense, caution, and care must be exercised when installing, maintaining, or operating the appliance. Always contact the manufacturer about problems or conditions you do not understand.

Safety Instructions

To reduce risk of tipping of the appliance from abnormal usage or by excessive loading of the oven door.

- Remove all tape and packaging before using the range. Destroy the carton and plastic bag after unpacking the range. Never allow children to play with packing material.
- Your appliance should be installed by a qualified technician in accordance with state and local laws.
- Never modify or alter the construction of a range by removing leveling legs, panels, anti-tip brackets/screws, or any other part of the product.

Do NOT use the oven or warmer drawer (if equipped) for storage.

Do NOT store items of interest to children in the cabinets above a range. Children climbing on the range to reach items could be seriously injured.

⚠️ WARNING

NEVER use this appliance as a space heater to warm a room. Doing so may result in carbon monoxide poisoning and overheating the oven.

⚠️ WARNING

NEVER cover rear vent on countertop, internal cavity holes or space at bottom of oven door.

⚠️ WARNING

NEVER cover an entire rack with materials such as aluminum foil or any flammable items. Doing so blocks air flow through the oven and may cause carbon monoxide poisoning, explode, or start a fire.

- The appliance and its individual shutoff valve must be disconnected from the gas supply piping system during any pressure testing of that system at test pressures in excess of 1/2psi (3.5 kPa).
- The appliance must be isolated from the gas supply piping system by closing its individual manual shutoff valve during any pressure testing of the gas supply piping system at test pressures equal to or less than 1/2psi (3.5 kPa).

NOTE: Do NOT touch surface burners, areas near these burners, oven burners, or interior surfaces of the oven or warming drawers (if equipped).

During and after use, do not touch or let clothing or other flammable items touch these areas until they have sufficient time to cool down. Both surface burners and oven burners and oven vent (if equipped) may be hot even though flames are not visible and may be hot enough to cause burns.

- Wear proper apparel: Loose fitting or hanging clothing should not be worn while using this appliance.
- When heating fat or grease, watch it closely. Fat and grease may catch fire if allowed to become too hot. If there is a grease fire, smother the fire with a pan lid, use baking soda, or a dry chemical or foam-type extinguisher. DO NOT USE WATER OR FLOUR.
- The recess in which an oven is to be installed shall be constructed so as to be framed in or guarded to prevent creation or storage space around the recessed portion of the appliance.

Precautions to Avoid Possible Exposure to Gas or Electrical Hazards

1. Do **NOT** operate the appliance if it is damaged or not working properly.
2. Never attempt to repair the appliance yourself. Any repairs to or installation of this appliance **MUST** be performed by a qualified installer, service agency or the gas supplier and in accordance with the instructions in the product's User Manual. Service of the appliance by a non-approved service person or agency could result in failure of the integrity of the appliance and could lead to property damage, serious injury or loss of life.
3. Know where the main gas shut-off valve is located and how to shut it off in an emergency. If uncertain of the gas shut-off valve's location, consult the User's Manual or contact your dealer.

Gas Connection Instructions

If a gas leak is detected, immediately shutoff all range burners and the propane source tank. Contact a qualified serviceman to repair gas leaks.

1. The propane supply line **MUST** have a 3/8" Flare Female connection to the cooktop in the upper left rear corner of the cabinet. If loose, tighten the gas line joint to the cooktop using two wrenches.
2. A pressure gauge tester should measure between 10" WC to 13.8" WC.
3. After pressure test, make sure the test port screw is tightened to 1.3 Nm to 1.7 Nm.
4. A gas leak check is required after the pressure check test has been completed. Make sure to gas-leak-check the test port screw, also.
5. If any leaks are detected around the pressure check port screw and gasket, replace port screw and gasket with new.

Electrical Connection Instructions

Contact a qualified electrician or serviceman to test and/or repair electrical issues.

1. The range **MUST** be connected to 12V DC service only.
2. The range **MUST** be connected only to a protected circuit fused for **NOT** more than 15 Amps.
3. Do **NOT** hi-pot the range unless the electronic ignition system has been disconnected.

NOTE: For additional information about electrical connections, refer to the Wiring Diagram in the Owner's Manual.

WARNING

Gas leaks may occur in your system and result in a dangerous situation. Gas leaks may not be detected by smell alone. Gas suppliers recommend you purchase and install a UL approved gas detector. Install and use accordance with the manufacturer's instructions.

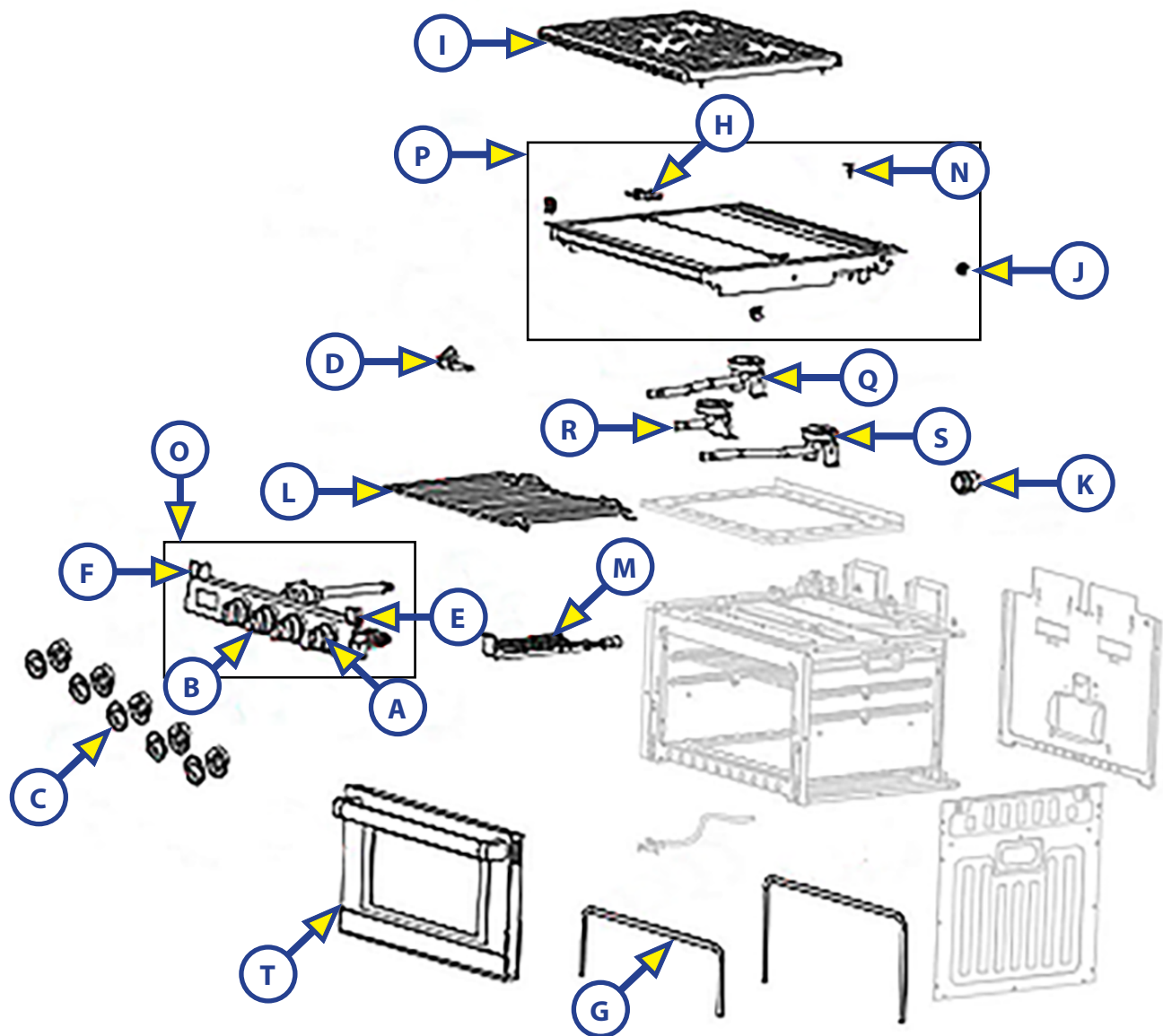
- Use only dry potholders and do not let potholders touch hot heating burners. Do not use a towel or other bulky cloths or towels in place of potholders.
- Never heat unopened food containers as the buildup of heat and pressure may cause the container to explode and result in injury.
- If you will be storing the range or throwing it away, remove the oven door beforehand.

NOTE: Do NOT attempt to operate the appliance during a power failure. If the power fails, always turn off the oven because the oven may begin to operate again when power resumes, even if nobody is present. Once power is restored reset clock.

Cleaning and Maintenance

- Make sure all controls are OFF and the range or cooktop is cool before cleaning.
- Do NOT use oven cleaners, bleach, steel wool or rust removers on the cooktop or burner grates. Only use nonabrasive pads.
- Do NOT obstruct the flow of combustion and ventilation air.
- Keep appliance area clean of combustible materials, gasoline and other flammable vapors and liquids.
- Clean oven with oven cleaner only. Never use a wire brush or metallic item for cleaning burner ports or orifices. Brush may "shed" bristles that may lodge in the orifice or burner ports and cause a fire or explosion.
- Use warm soapy water only to clean the burner grates, cooktops, painted surfaces, porcelain surfaces, stainless steel surfaces and plastic items on your range or cooktop. Do not use gritty or acid-type cleaners.
- Do NOT allow foods containing acids (such as lemon or tomato juice, or vinegar) to remain on porcelain or painted surfaces. Acids may remove the glossy finish. Wipe up egg spills when cooktop is cool.
- Do NOT wash warm porcelain surfaces. Allow these areas to cool before cleaning. You could burn yourself, or the porcelain could crack.
- Pitting and discoloration will result if spills are allowed to remain for any length of time on stainless steel.
- Do NOT allow spillovers to remain on the burner caps. The caps could become permanently stained.
- When cleaning around the burners, use care to prevent damage to the electrode (if so equipped). If a sponge or cloth should catch the metal igniter electrode, it could damage or break the electrode. If this occurs, the burner will not light.

Spare Parts List



Callout	Part #	Description	Model
A	2023020753	Oven Knob	17D & 21D Digital
B	2023020752	3 Cook Top Knobs	17D & 21D Digital
C	2022451536	LED Printed Circuit Board	17D & 21D Digital
D	2023020755	Ignitor	17D & 21D Digital
E	2023020754	Control Panel Bracket-R	17D & 21D Digital
F	2023020751	Control Panel Bracket-L	17D & 21D Digital
G	2023019465	Oven Door Seal 17"	17D Digital
	2023019466	Oven Door Seal 21"	21D Digital
H	2023019467	Middle Hinge w/Hardware	17D & 21D Digital
I	2022451566	Cook Top Grate	17D & 21D Digital
J	2023019468	Rear Silicon Gasket	17D & 21D Digital
K	2023020756	Lamp	17D & 21D Digital
L	2023019470	Bake Rack	17D & 21D Digital

Callout	Part #	Description	Model
M	2023019471	Oven Burner Assembly	17D & 21D Digital
N	2022301244	Grate Rubber Pad	17D & 21D Digital
O	2023020758	Front Panel Assembly Module Blk	17D & 21D Digital
	2023020759	Front Panel Assembly Module SS	17D & 21D Digital
P	2023020757	Top Tray Assembly Module	17D & 21D Digital
Q	2023020748	Burner Assembly w/Igniter Wire-L	17D & 21D Digital
R	2023020749	Burner Assembly w/Igniter Wire-R	17D & 21D Digital
S	2023020750	Burner Assembly w/Igniter Wire-M	17D & 21D Digital
T	2022451445	17" Door Assembly Blk	17D Digital
	2023019477	17" Door Assembly Combo	17D Digital
	2022453166	17" Door Assembly SS	17D Digital
	2023019478	21" Door Assembly Blk	21D Digital
	2023019479	21" Door Assembly Combo	21D Digital
	2023019480	21" Door Assembly SS	21D Digital
	2023019481	21" Door Assembly SS w/Towel Rack	21D Digital
	2023019482	21" Door Assembly Combo w/Towel Rack	21D Digital

Troubleshooting

Trouble/Symptom	Cause/Solution
Surface burners do not light or burn evenly	Surface control knob has not been fully rotated to the LIGHT position.
	Check to see if gas valve is open. If not, open it.
	Burners are clogged. Make sure burner is off. Use a small wire toothbrush or needle to clean burner slots.
	Low gas level in tank. Refill or replace gas tank,
	Low battery power. Replace AAA battery which is under igniter cap.
	There is moisture on the burner. With burner off, dry burner completely.
Surface burner flame is yellow or orange instead of blue	Debris may be present in gas line. Let burner run for a few minutes to see if flame changes to blue.
	Humid air in home, sometimes caused by running a humidifier, may cause flames to burn yellow.

Specifications

Optional Power	Gas Power
BTU/HR	Left and Right Burner: 6500BTU
	Front Burner: 8000BTU
	Oven: 7100BTU
Fuel / Power	Propane
Inlet Pressure	10" WC Min. to 13.8" WC Max
Power Input	12V DC<2 Amp
Inner Volume of the Oven	17D" Range Oven: 35L
	21D" Range Oven: 51L



FURRION®

Furrion, LLC (Furrion) are wholly owned subsidiaries of Lippert Components, Inc. (Lippert)
Furrion, LLC (Furrion) sont des filiales en propriété exclusive de Lippert Components, Inc. (Lippert)
Furrion, LLC: 52567 Independence Ct., Elkhart, IN, 46514

Furrion Innovation Center & Institute of Technology
Centre d'innovation et institut de technologie Furrion
22244 Innovation Drive, Elkhart, IN 46514-5514, USA
Toll free/Numéro gratuit/Línea telefónica gratuita: 1-800-789-3341
Email/Courriel/Correo electrónico: customerservice@lci1.com

©2007-2025 Furrion, LLC. All rights reserved.

©2007-2025 Furrion, LLC. Tous droits réservés.

For Patent Info: www.Lippert.com/patents

Pour des informations sur les brevets: www.Lippert.com/patents

SUPPORT.LCI1.COM/FURRION



The contents of this manual are proprietary and copyright protected by Lippert. Lippert prohibits the copying or dissemination of portions of this manual unless prior written consent from an authorized Lippert representative has been provided.

Any unauthorized use shall void any applicable warranty.

The information contained in this manual is subject to change without notice and at the sole discretion of Lippert. Revised editions are available for free download from lippert.com.

Please recycle all obsolete materials.

Les renseignements contenus dans le présent manuel peuvent seulement être distribués sous forme de document complet, à moins de recevoir l'approbation explicite de Lippert Components pour distribuer des parties individuelles. Tous les renseignements contenus dans le présent manuel peuvent être modifiés sans préavis. Les éditions révisées pourront être téléchargées gratuitement sur le site lci1.com. Ces renseignements sont considérés comme étant factuels jusqu'à ce qu'une version révisée les rende désuets.

Veuillez recycler tout le matériel désuet.

For all concerns or questions, please contact Lippert.

Communiquer avec Lippert Components si vous avez des questions ou des préoccupations.

Ph: 432-LIPPERT (432-547-7378) | Web: lippert.com | Email: customerservice@lci1.com