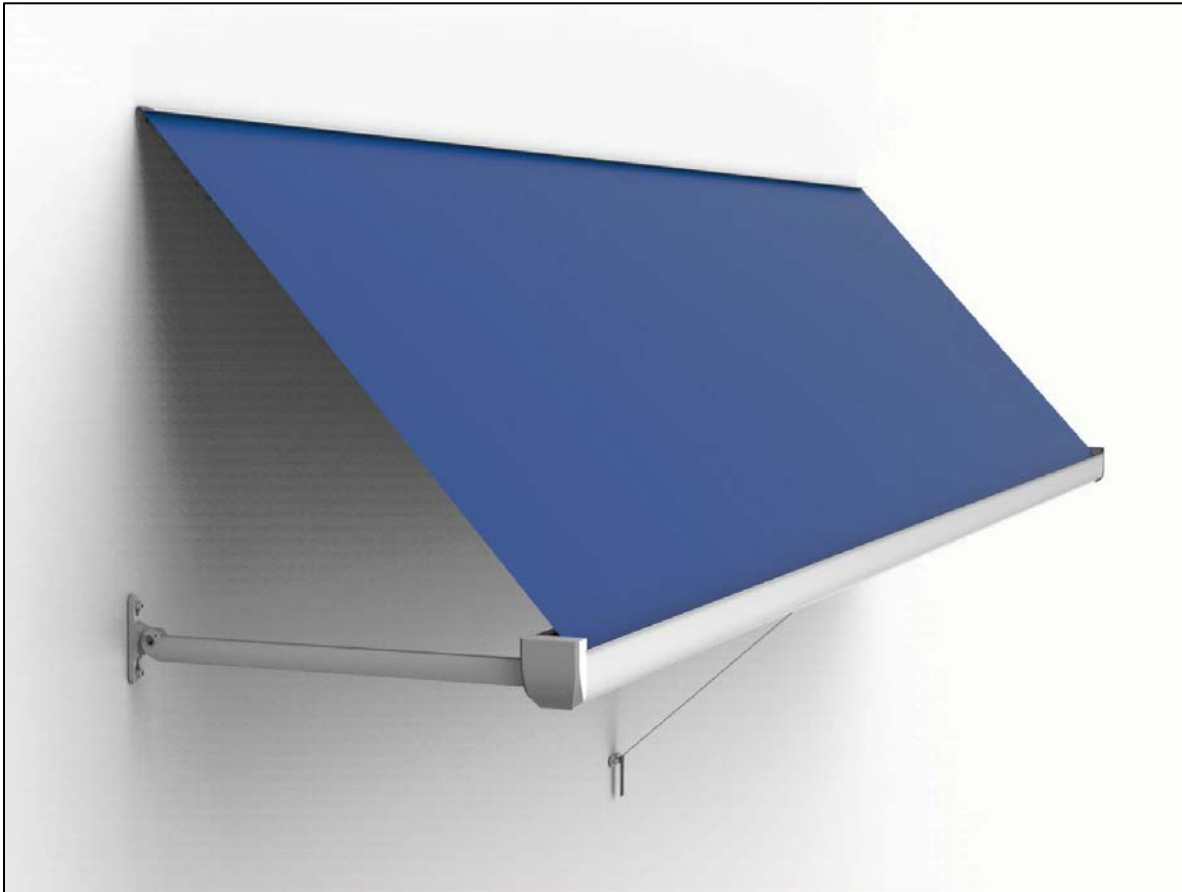


# ULTRASHADE WINDOW AWNING INSTALLATION GUIDE

REV.01262016



## RV AWNING PRODUCTS

1361 CALLE AVANZADO, SAN CLEMENTE, CA 92673 (800) 382-8442 FAX (949)276-5500

[www.girardrv.com](http://www.girardrv.com)



Girard Systems awnings may be operated in light wind and rain conditions. When periods of heavy rain and or high wind are expected the awning must be closed. Never leave the awning open and unattended.

**Damage caused by wind and rain is not covered by warranty.**

All awnings must be closed prior to moving the vehicle for any reason. As an extra safety precaution a visual check that every awning is fully closed is required.

**Damage caused by failure to comply with these instructions is not covered by warranty.**

Before using your awning, ensure that the area into which the awning will be deployed is free of obstructions (Trees, walls, pillars, posts, other vehicles etc.)

**Damage caused by collisions with any of the above or similar is not covered by warranty.**



This product is retracted and held closed by 2 torsion springs. While extending or retracting this product **NEVER let go of the pull strap until it is secured on the catch or the awning is fully closed.**

Doing so will allow the awning to close rapidly under the stored strength of the springs which could result in damage to the vehicle, the awning or both.

## CONTENTS

Product Description .....	3
Installation instructions .....	4
Replacing the fabric .....	9
Torsion spring table .....	11
Care and Maintenance .....	12
Exploded Diagram .....	14
Parts List .....	15

## PRODUCT DESCRIPTION

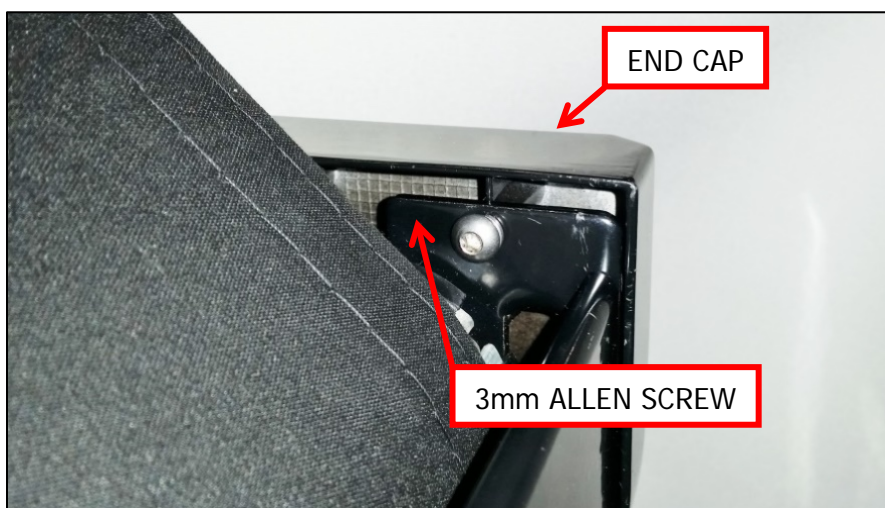
The ULTRASHADE window awning features very few moving parts, lightweight and easy to install, no electronic controls and full extension or retraction in a matter of seconds.



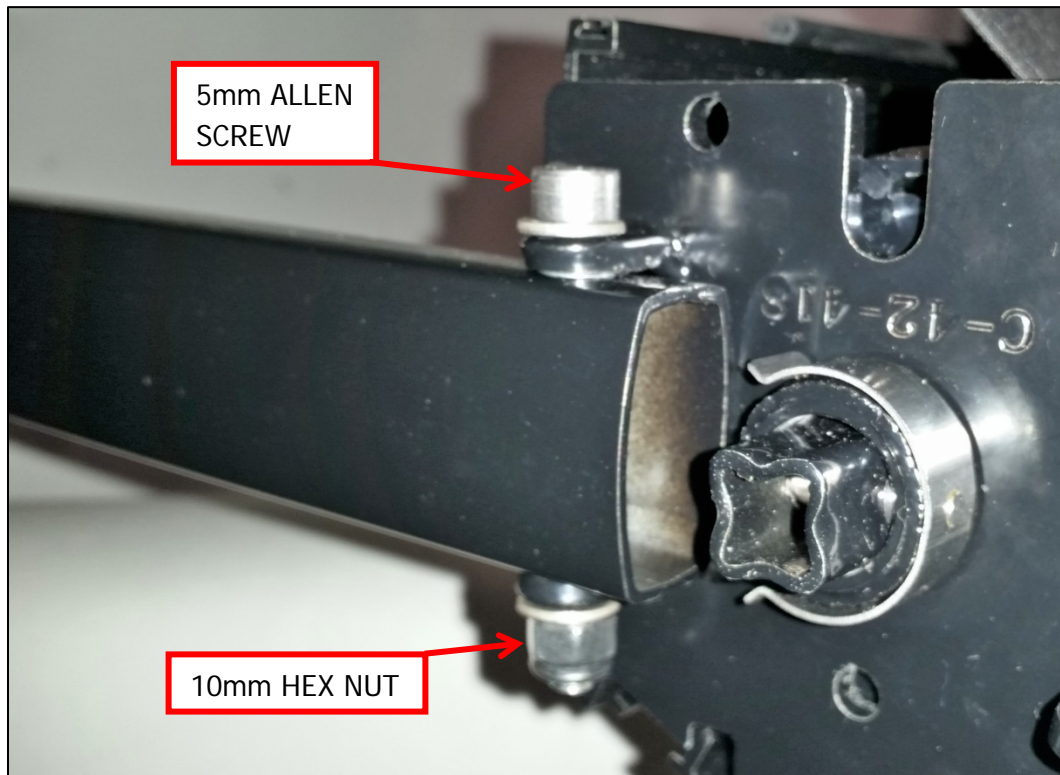
## INSTALLATION INSTRUCTIONS

Before beginning to install the awning please ensure the following;

- The vehicle is parked and leveled on suitable hard standing.
  - Suitable precautions have been taken to protect the vehicle from accidental damage.
  - The area of the vehicle where the awning is to be installed has been prepared.
  - Sufficient manpower, a minimum of 2 persons is required.
  - Suitable protective clothing is worn by the persons doing the installation.
  - Suitable and serviceable lifting and holding equipment should be used to avoid personal injury.
  - When mounting fixtures to the vehicle be aware that the soft materials that the skin of the vehicle is made from can be torn out or "Stripped" by the over tightening of fasteners. **DO NOT OVER TIGHTEN FIXING BOLTS/SCREWS.**
  - Make every effort to ensure that fasteners are mounted to the structural framework of the vehicle not just the skin.
  - Any holes made in the skin of the vehicle must be sealed with silicone sealant, putty tape or similar product.
- 1) Mark a horizontal line 4½ - 5" above the window where the awning is to be installed.
  - 2) Fix the Awning rail along this line with the screw holes at the bottom taking every precaution to ensure that it is exactly level and centered to the top of the window. **(Use #10 X ¾" self-tapping screws)**
  - 3) Remove 2 X 3mm Allen Screws from BOTH END CAPS of the awning cassette (If fitted).



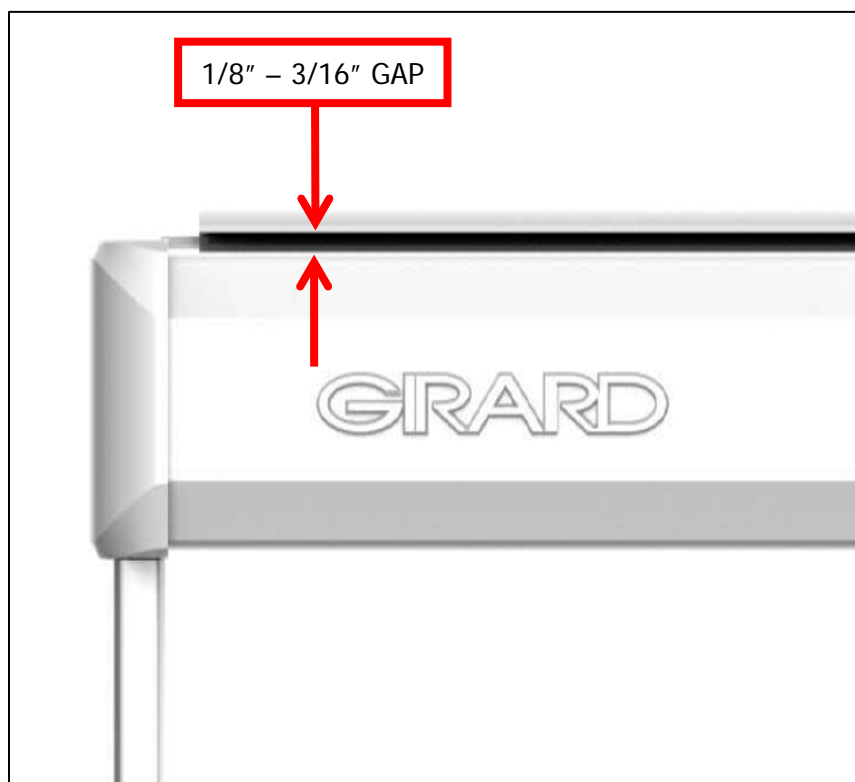
- 4) On a flat protected surface, attach the arms to the cassette using a 5mm Allen wrench and a 10mm Hex wrench or socket.



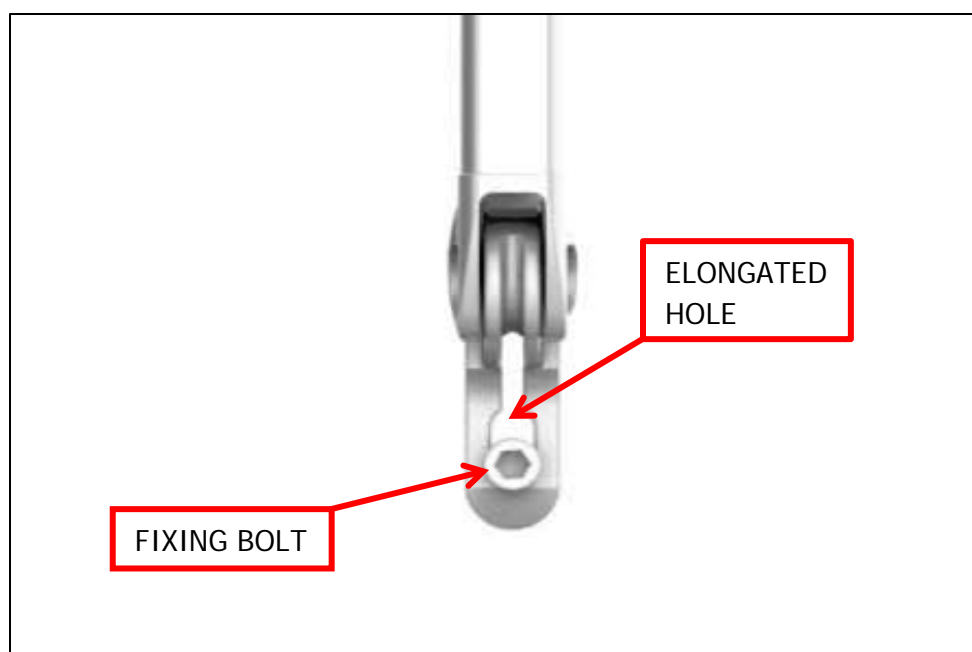
- 5) The assembly is now ready for installation.
- Ensure that the sidewall of the vehicle is sufficiently protected.
  - Using a flat headed screwdriver open out the end of the awning rail where the fabric is to be inserted.
  - Spray the inside of the awning rail with dry silicone or similar product.
  - Insert the fabric and poly rope into the awning rail and ensure that the fabric and poly rope are centered along the length of the channel.

**Take care to not damage the side of the vehicle with the awning arms and not to damage the fabric as it is inserted into the awning rail.**

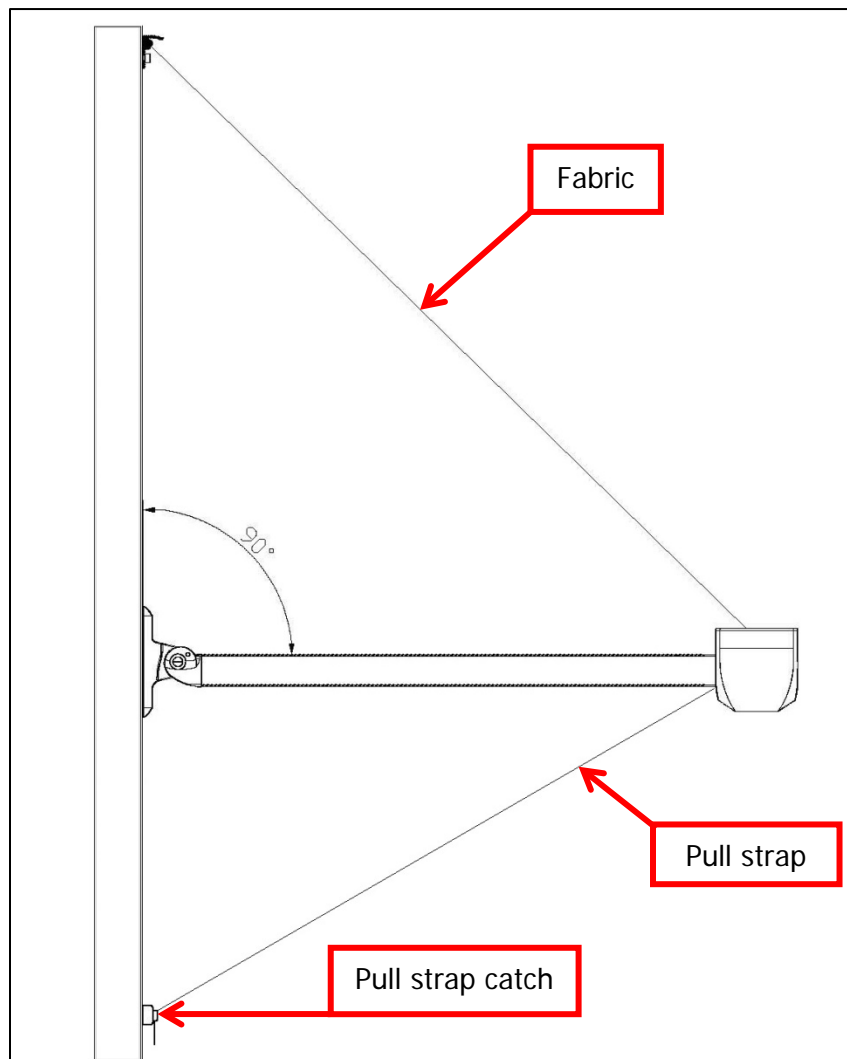
- 6) Pull gently on the cassette and hold firmly while removing the COTTER PIN, then slowly allow the cassette to be pulled to the closed position.
- 7) Ensure an even 1/8" - 3/16" Gap between the cassette and the lip of the awning rail. The holes in the fixing brackets are elongated to allow a certain amount of adjustment to achieve this.



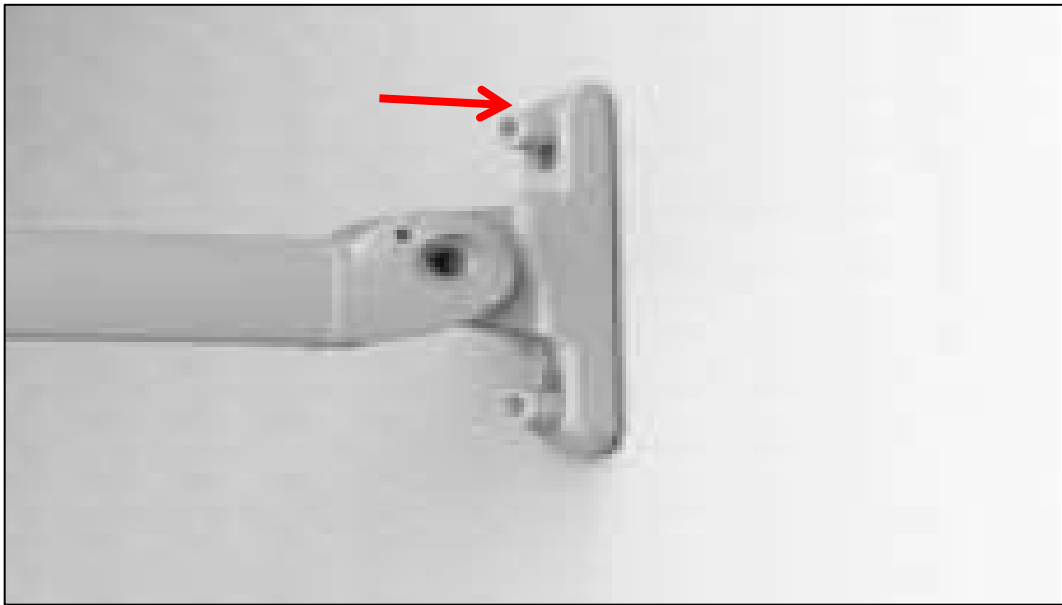
- 8) Mark a plumb line where the awning arms are to be fixed to the side of the vehicle. Fix the arms to the side of the vehicle using the lowermost holes in the fixing bracket. (Use #14 X 1 1/4" self-tapping screws ).



- 9) Using the PULL STRAP open the awning until the arms are at right angles to the side of the vehicle and insert the cotter pin to hold the awning in this position. If the hole for the cotter pin does not line up in this position, the awning must be held in this position by one of the installers.
- 10) Mark a plumb line from the center of the awning to plot the position of the Pull strap catch. It should be low enough that the pull strap will be taut and the arms will be held at 90 degrees to the side of the vehicle.
- 11) Fix the Pull strap catch to the side of the vehicle and place the loop of the strap on the catch.



- 12) With the awning extended install the remaining screws for the awning arm mounting brackets. (Use #14 X 1 1/4" self-tapping screws).



- 13) Extend and retract the awning several times to test function.
- 14) Replace the awning cassette end caps.
- 15) Using a 1/8" drill, make a pilot hole approximately 1" in from either end of the awning rail and insert the fabric screws to secure the top end of the fabric in place.
- 16) Before retracting the awning clear any debris from the fabric.
- 17) ALWAYS unhook the pull strap and **slowly** allow the awning to be retracted up to the awning rail.
- 18) Hold the pull strap slightly to the left or right so that it does not wrap on top of itself inside the cassette as this would create a permanent crease in the fabric.

**REMEMBER!! NEVER LET GO OF THE PULL STRAP UNTIL THE AWNING IS FULLY RETRACTED OR THE PULL STRAP IS SECURED TO THE CATCH.**

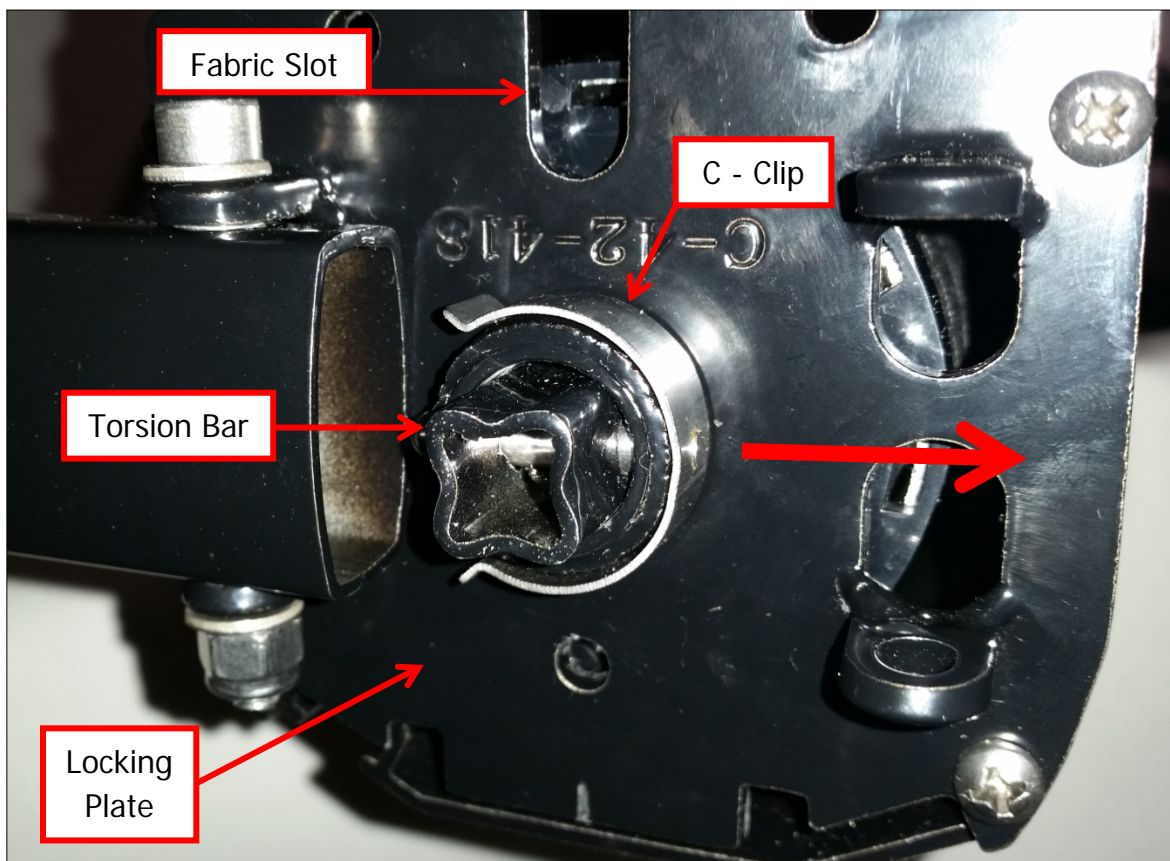
Doing so would allow the awning to close rapidly under the stored strength of the springs which could result in damage to the vehicle, the awning or both.

Sometimes during windy conditions the Pull Strap can vibrate causing a buzzing or humming sound. This can be negated by putting a single twist in the pull strap before it is secured on the catch.



## REPLACING THE FABRIC

1. Fully extend the awning and secure with the pull strap.
2. Remove the end caps.
3. Using a 14mm Wrench hold the square torsion bar while removing the C-clip. **DO NOT RELEASE THE TORSION BAR**. Now slowly under control allow the torsion spring to unwind by turning the wrench in a COUNTER-CLOCKWISE direction.



4. Pay out the fabric until the end of the fabric and the poly rope are aligned with the slot in the locking plate.
5. Remove any fabric screws and slide the fabric out of the roller tube and awning rail.
6. Insert new fabric into the roller tube and the awning rail simultaneously.

7. Ensure that the fabric is centered and pulled taut in the roller tube and secure in place with fabric screws.
8. Ensure the fabric is aligned and pulled taut in the awning rail and secure in place with fabric screws.
9. Using the 14mm wrench tension the torsion spring by turning it in a CLOCKWISE direction and insert the C-clip. **DO NOT RELEASE THE TORSION BAR UNTILL THE C-CLIP IS IN PLACE.** Refer to the table on the next page to determine how many turns need to be put on the spring.

**NOTE; The hole in the torsion bar must be correctly aligned for the C-Clip to be inserted.**



10. Close the awning and ensure that all of the fabric has been pulled into the cassette, and any exposed fabric is pulled taut. If this is not the case then additional tension is required on the torsion spring. Repeat steps 1, 3 and 9 but increase the number of turns indicated in step 9 as required in  $\frac{1}{2}$  turn increments until the awning retracts correctly.
11. Replace the end caps.



## **TORSION SPRING TABLE**

<b>AWNING SIZE</b>	<b>DROP</b>	<b>ARMS</b>	<b>TURNS</b>	<b>SPRINGS</b>
(0.762m) 30"	(0.8m) 31½"	XL	8	1
(0.915m) 36"	(0.7m) 27½"	STANDARD	3	1
(1.067m) 42"	(0.7m) 27½"	STANDARD	4.5	1
(1.372m) 54"	(0.7m) 27½"	STANDARD	6.5	1
(1.677m) 66"	(0.7m) 27½"	STANDARD	7.5	1
(1.982m) 78"	(0.7m) 27½"	STANDARD	8	1
(3.506m) 138"	(0.7m) 27½"	STANDARD	9	1
(3.963m) 156"	(0.7m) 27½"	STANDARD	4	2

### **IMPORTANT NOTE**

If the awning is long enough to require 2 springs, remember that the RH spring will need to be tensioned in the opposite direction to the LH spring.

Left and right are dictated by the orientation of the awning when it is mounted to the vehicle. LH springs are tensioned in a CLOCKWISE direction, therefore RH springs are tensioned in a COUNTER – CLOCKWISE direction.

Please ensure that the springs are tensioned the exact same number of turns, down to the ½ turn, as this will ensure an even tension across the width of the fabric.



## **CARE AND MAINTENANCE GUIDE**

### **AWNING FABRICS**

For all cleaning, stain removal, care and maintenance of Acrylic and Polyester fabrics the recommendations are the same.

#### **Fabric Care Guidelines**

1. Brush off surface dirt with a clean soft bristle brush.
2. Hose down the fabric with clean water.
3. Use only natural soap or dishwashing liquid.
4. Prepare soap mixture in a clean bucket.
5. Dunk a clean, soft bristle brush into the mixture.
6. Use sweeping motions to clean the awning.
7. Allow soap to soak in and capture dirt.
8. Rinse thoroughly to remove all residues.

**AIR DRY ONLY! Pressing, steaming, or machine drying will shrink awning fabric.**

## **STAIN SOLUTIONS**

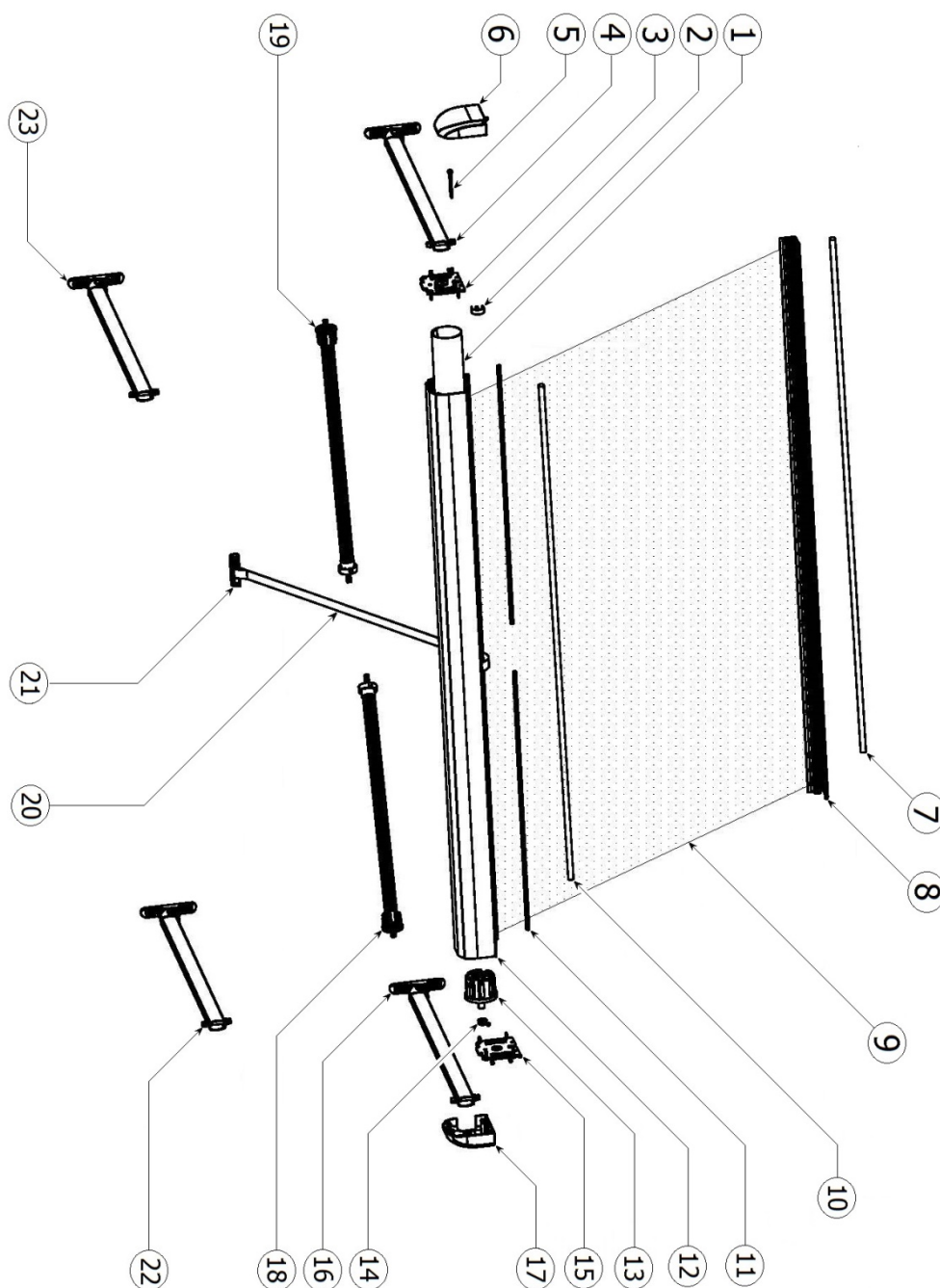
<b><u>STAIN</u></b>	<b><u>RECOMMENDED CLEANING SOLUTIONS</u></b>
BEER	Dishwashing liquid (2 oz.)/1 gallon water/white vinegar (3 oz.)
BERRY	Dishwashing liquid (2 oz.) /1 gallon water / ammonia (4-8 oz.)
BIRD DROPPINGS	Dishwashing liquid (2 oz.)/1 gallon water.
BLOOD (DRIED)	Dishwashing liquid (2 oz.) / 1 gallon water / ammonia (4-8 oz.)
BUTTER	volatile solvent (acetone) 100%
CHARCOAL, PENCIL MARKS	vacuum, then dishwashing liquid (2 oz.) / 1 gallon water
CATSUP OR MUSTARD	Dawn® dishwashing liquid (2 oz.) / 1 gallon water
CHEWING GUM	volatile solvent (acetone) 100%
CHOCOLATE	Dishwashing liquid (2 oz.) / 1 gallon water / ammonia (4 oz.)
COFFEE	Dishwashing liquid / water, white vinegar, acetone
COLA	Dishwashing liquid (2 oz.) / 1 gallon water
CRAYON	Paint remover (100%), oil or grease remover (mix as directed)



EGG (RAW)	Dishwashing liquid (2 oz.) / 1 gallon water
GRAPE JUICE	Dishwashing liquid (2 oz.) / 1 gallon water
GRAVY	Dishwashing liquid (2 oz.) / 1 gallon water
GREASE (CAR)	volatile solvent (acetone) 100%
INK (PERMANENT, INDIA, BALLPOINT)	Paint remover (100%), volatile solvent (acetone) 100%, soap and water
IRON RUST	Oxalic or Citric acid (2oz.) / 1 gallon water
LIPSTICK	Paint remover, oil or grease remover (mix as directed)
MASCARA	Paint remover (100%), volatile solvent (acetone-100%), dishwashing liquid (2 oz.) / 1 gallon water
MILDEW	Bleach (1/2 cup) /dishwashing liquid (2 oz.) / 1 gallon water
MILK	Dishwashing liquid (2 oz.) / 1 gallon water
NAIL POLISH	volatile solvent (acetone) 100%
OIL	volatile solvent (acetone) 100%
ORANGE DRINK	Dishwashing liquid (2 oz.) / 1 gallon water
PAINT (LATEX) WET	Dishwashing liquid (2 oz.) / 1 gallon water
PAINT (LATEX) DRIED	Paint remover (100%), oil or grease remover (mix as directed)
PAINT (OIL OR LACQUER)	Paint remover (100%), oil or grease remover (mix as directed)
SHOE POLISH (LIQUID)	volatile solvent (acetone) 100%
SHOE POLISH (WAX)	apply heated iron over towel, volatile solvent (acetone) 100%
SUNTAN LOTION	Pine oil detergent / water (mix as directed)
TEA	Dishwashing liquid (2 oz.) / 1 gallon water
TOMATO JUICE	Dishwashing liquid (2 oz.) / 1 gallon water
TREE SAP	Turpentine (100%), dishwashing liquid (2 oz.) / 1 gallon water
URINE	Dishwashing liquid (2 oz.)/1 gallon water/white vinegar (3 oz.)
VOMIT	Dishwashing liquid (2 oz.)/1 gallon water/white vinegar (3 oz.)
FOOD COLOR	Dishwashing liquid (2 oz.)/1 gallon water/white vinegar (3 oz.)
WAX (CANDLE)	apply heated iron over towel, volatile solvent (acetone) 100%
WINE	Dishwashing liquid (2 oz.) / 1 gallon water / ammonia (4-8 oz.) / white vinegar (3 oz.)



## ULTRASHADE EXPLODED DIAGRAM





## **PARTS LIST**

<b>ITEM No.</b>	<b>DESCRIPTION</b>	<b>PART No.</b>
1	Roller Tube 36" - 64mm	5310036-01
1	Roller Tube 42" - 64mm	5310042-01
1	Roller Tube 66" - 64mm	5310066-01
1	Roller Tube 78" - 64mm	5310078-01
1	Roller Tube 138" - 64mm	5310138-01
1	Roller Tube 156" - 64mm	5310156-01
2	C Pin	5310001-02
3	Lock Plate LH	531L002-03
4	Arm Assembly LH BLK	531L003-04B
5	R Pin	5310004-05
6	End Cap Lead Rail LH BLK	531L005-06B
7	Poly Rope top 36"	5310036-07
7	Poly Rope top 42"	5310042-07
7	Poly Rope top 66"	5310066-07
7	Poly Rope top 78"	5310078-07
7	Poly Rope top 138"	5310138-07
7	Poly Rope top 156"	5310156-07
8	Lead Rail, BLK 36"	5310036-08B
8	Lead Rail, BLK 42"	5310042-08B
8	Lead Rail, BLK 66"	5310066-08B
8	Lead Rail, BLK 78"	5310078-08B
8	Lead Rail, BLK 138"	5310138-08B
8	Lead Rail, BLK 156"	5310156-08B
9	Fabric Assy 36" - SUNBRELLA	5310036-09
9	Fabric Assy 42" - SUNBRELLA	5310042-09
9	Fabric Assy 66" - SUNBRELLA	5310066-09
9	Fabric Assy 78" - SUNBRELLA	5310078-09
9	Fabric Assy 138" - SUNBRELLA	5310138-09
9	Fabric Assy 156" - SUNBRELLA	5310156-09
10	Poly Rope Cover Housing 36"	5310036-10
10	Poly Rope Cover Housing 42"	5310042-10
10	Poly Rope Cover Housing 66"	5310066-10
10	Poly Rope Cover Housing 78"	5310078-10
10	Poly Rope Cover Housing 138"	5310138-10
10	Poly Rope Cover Housing 156"	5310156-10
11	Rubber Gasket 36"	5310036-11
11	Rubber Gasket 42"	5310042-11
11	Rubber Gasket 66"	5310066-11
11	Rubber Gasket 78"	5310078-11



11	Rubber Gasket 138"	5310138-11
11	Rubber Gasket 156"	5310156-11
12	Cover Housing 36"	5310036-12B
12	Cover Housing 42"	5310042-12B
12	Cover Housing 66"	5310066-12B
12	Cover Housing 78"	5310078-12B
12	Cover Housing 138"	5310138-12B
12	Cover Housing 156"	5310156-12B
13	Gudgeon	5310006-13
14	Bushing	5310007-14
15	Lock Plate RH	531R002-15
16	Arm Assembly, RH, BLK	531R003-16B
17	End Cap Lead Rail, RH, BLK	531R005-17B
18	Spring RH	531R008-18
19	Spring 30"-35" LH	531L030-19
19	Spring 36"-53" LH	531L036-19
19	Spring 54"+ LH	531L054-19
20	Pull Strap	5310009-20
21	Pull Strap Catch	5310010-21B
22	XL Arm Assembly RH, BLK	531R011-22B
23	XL Arm Assembly LH, BLK	531L011-23B
24	Pull Rod/ Cane Ultra WA	5310012-24