



LIPPERT
COMPONENTS®

Tandem Axle Slipper A/P Kit



Triple Axle Slipper A/P Kit



Attaching Parts for Slipper Spring Axles

Installation and Owner's Manual

(For Aftermarket Applications)

Table of Contents

Introduction	2
Safety	2
Parts List	3
Resources Required	4
Prior to Installation	4
Installation	5
A/P Kit Tandem or Triple Installation Tips	5
Tandem or Triple Slipper Spring Axle A/P Kits	6
Maintenance	7
Notes	8

Attaching Parts Kits for Axles Aftermarket Kits

Part #	Description
128877	Tandem Slipper AP Kit, 33.5" Axle Spacing, EQ-1304
137383	Triple Slipper AP Kit, 33.5" Axle Spacing, EQ-1304



Attaching Parts for Slipper Spring Axle Installation and Owner's Manual (For Aftermarket Applications)

Introduction

The Attaching Parts Kits for axle suspensions are designed for easy upgrading or replacing old suspension systems.

NOTE: Upgrade or replacement of suspension systems may be performed on an overslung (Fig.1A) or underslung (Fig.1B) axle configurations.

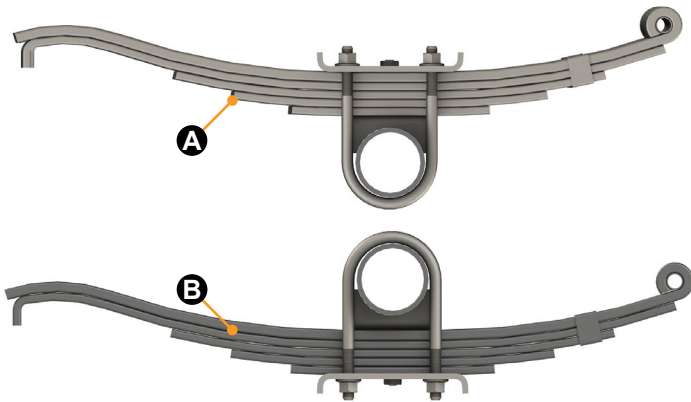


Fig.1

NOTE: Images used in this document are for reference only when assembling, installing and/or operating this product. Actual appearance of provided and/or purchased parts and assemblies may differ.

Additional information about this product can be obtained from lci1.com/support or by using the myLCI app. Replacement kits can be ordered from <https://store.lci1.com/> or by using the myLCI app.

The myLCI app is available for free on iTunes® for iPhone® and iPad® and also on Google Play™ for Android™ users.

iTunes®, iPhone®, and iPad® are registered trademarks of Apple Inc.

Google Play™ and Android™ are trademarks of Google Inc

Information regarding the assembly and components of this product can be obtained from <https://support.lci1.com/ap-kits>.

Safety

Read and fully understand all instructions before installing or operating this product. Adhere to all safety labels.

This manual provides general instructions. Many variables can change the circumstances of the instructions, i.e., the degree of difficulty, operation and ability of the individual performing the instructions. This manual cannot begin to plot out instructions for every possibility, but provides the general instructions, as necessary, for effectively interfacing with the device, product or system. Failure to correctly follow the provided instructions may result in death, serious personal injury, severe product and/or property damage, including voiding of the LCI limited warranty.

⚠ WARNING

THE "WARNING" SYMBOL ABOVE IS A SIGN THAT A SAFETY RISK IS INVOLVED AND MAY CAUSE DEATH, SERIOUS PERSONAL INJURY AND/OR SEVERE PRODUCT OR PROPERTY DAMAGE IF NOT SAFELY ADHERED TO AND WITHIN THE PARAMETERS SET FORTH IN THIS MANUAL.

⚠ WARNING

FAILURE TO FOLLOW INSTRUCTIONS PROVIDED IN THIS MANUAL MAY RESULT IN DEATH, SERIOUS PERSONAL INJURY AND/OR SEVERE PRODUCT AND PROPERTY DAMAGE, INCLUDING VOIDING OF THE COMPONENT WARRANTY.

⚠ WARNING

THE TRAILER MUST BE SUPPORTED PER MANUFACTURER'S RECOMMENDATIONS BEFORE WORKING UNDERNEATH. FAILURE TO DO SO MAY RESULT IN DEATH OR SERIOUS PERSONAL INJURY.



Attaching Parts for Slipper Spring Axle Installation and Owner's Manual

(For Aftermarket Applications)

⚠ CAUTION

THE "CAUTION" SYMBOL ABOVE IS A SIGN THAT A SAFETY RISK IS INVOLVED AND MAY CAUSE PERSONAL INJURY AND/OR PRODUCT OR PROPERTY DAMAGE IF NOT SAFELY ADHERED TO AND WITHIN THE PARAMETERS SET FORTH IN THIS MANUAL

⚠ CAUTION

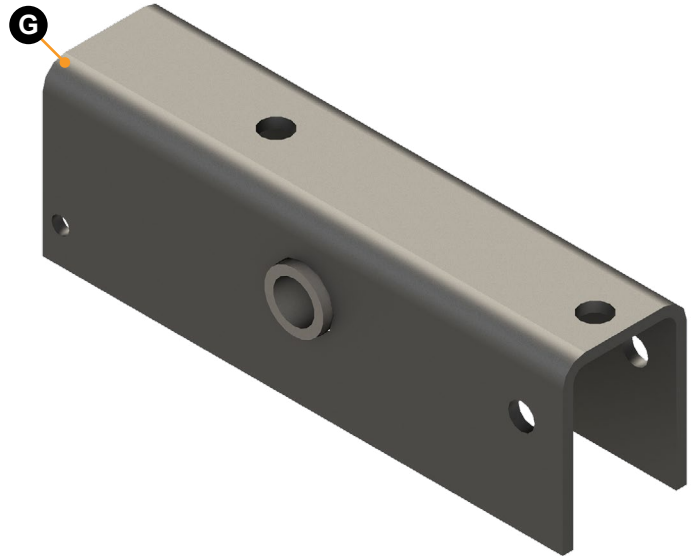
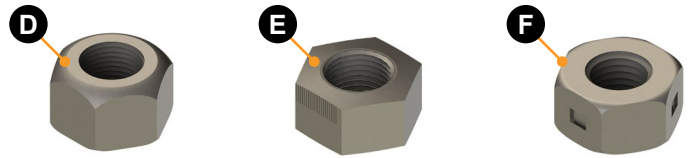
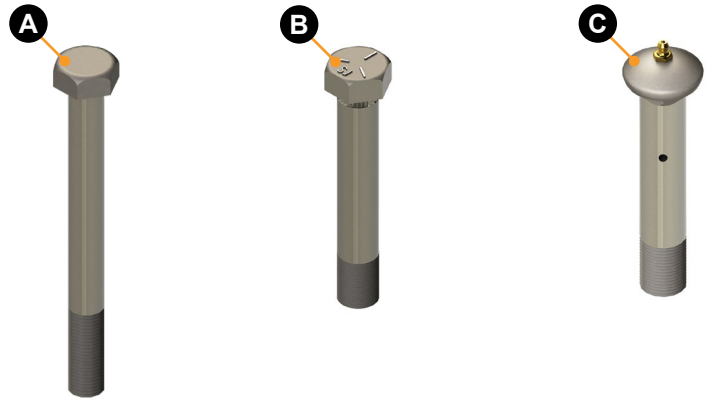
MOVING PARTS CAN PINCH, CRUSH, OR CUT. KEEP CLEAR AT ALL TIMES.

Parts List

NOTE: Part numbers are shown for identification purposes only. Not all parts are available for individual sale. All parts with a link to the Lippert Store can be purchased.

Tandem Slipper A/P Aftermarket Kit PN 128877			
Letter	PN	Description	Qty
A	127828	Bolt, 5/16" - 18 x 3 1/4", GR5 Zinc	4
B	126782	Bolt, 9/16" - 18 x 3 1/2", GR5, Black Phos & Oil	4
C	127846	Wet Bolt, 7/8" - 9 x 4.7", Slip Equal	2
D	127802	Nut, 7/8" - 9, T-Loc	2
E	125801	Hex Nut, 9/16" - 18, Prevailing Torque	4
F	127799	Crush Nut, 5/16" - 18, Zinc	4
G	127771	EQ-2.00 Slipper, 28.80 HS - 33.50 AS, EQ-1304	2

Triple Slipper A/P Aftermarket Kit PN 137383			
Letter	PN	Description	Qty
A	127828	Bolt, 5/16" - 18 x 3 1/4", GR5 Zinc	6
B	126782	Bolt, 9/16" - 18 x 3 1/2", GR5, Black Phos & Oil	6
C	127846	Wet Bolt, 7/8" - 9 x 4.7", Slip Equal	4
D	127802	Nut, 7/8" - 9, T-Loc	4
E	125801	Hex Nut, 9/16" - 18, Prevailing Torque	6
F	127799	Crush Nut, 5/16" - 18, Zinc	6
G	127771	EQ-2.00 Slipper, 28.80 HS - 33.50 AS, EQ-1304	4





Attaching Parts for Slipper Spring Axle Installation and Owner's Manual (For Aftermarket Applications)

Resources Required

- 1 to 2 people, depending on task
- Pneumatic impact wrench
- Torque wrench (ft-lb)
- Cordless or electric drill or screw gun
- Appropriate drive bits
- 1¹/₁₆" deep well socket
- 3⁴/₄" deep well socket
- 1³/₁₆" deep well socket
- Grease gun
- Multi-purpose grease marked with a NLGI code of GC-LB
- Appropriately-sized and rated bolts and fasteners
- Floor jacks
- Floor jack stands
- Pry bar (optional)
- Hammer

Prior to Installation

⚠ WARNING

MAKE SURE THAT ANY POINTS OF CONTACT FOR THE JACK STANDS DO NOT RESULT IN DAMAGE TO ANY PANELS OR LINES UNDER THE TRAILER. IMPROPER RAISING OR LOWERING OF THE TRAILER COULD RESULT IN DEATH, SERIOUS PERSONAL INJURY OR SEVERE PRODUCT OR PROPERTY DAMAGE.

1. Park the trailer on a level surface.
2. With the trailer still connected to the tow vehicle, lower the front landing gear or the tongue jack until making contact with the ground.
3. Disconnect all internal and external power supplies.
4. Using the properly-rated floor jacks, lift the trailer according to the manufacturer's recommendation until the wheels are no longer in contact with the ground (Fig.2).

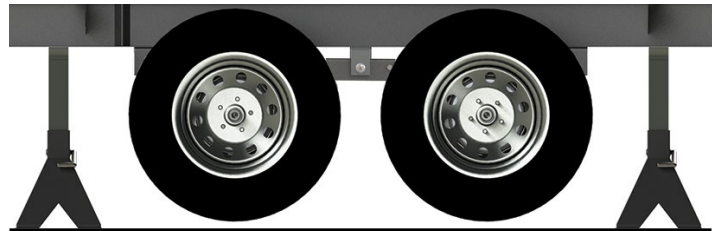


Fig.2

5. Support framework in accordance with the manufacturer's recommendations.
6. Remove the wheels and set aside wheels and lug nuts.



Attaching Parts for Slipper Spring Axle Installation and Owner's Manual (For Aftermarket Applications)

7. Using a floor jack, lift the axles slightly and place the additional properly-rated jack stands under the axles (Fig.3) so that the bolts can be driven out with a hammer.

NOTE: Allowing the axles to drop could result in damage to the wiring for the electric brakes.

8. With an impact wrench or an appropriate wrench, loosen the nuts of the leaf spring hanger bolts (Fig.3A), the nuts on the bolts (Fig.3B), and the nut on the equalizer bolt (Fig.3C).

NOTE: Hold the head of the bolts with a wrench.

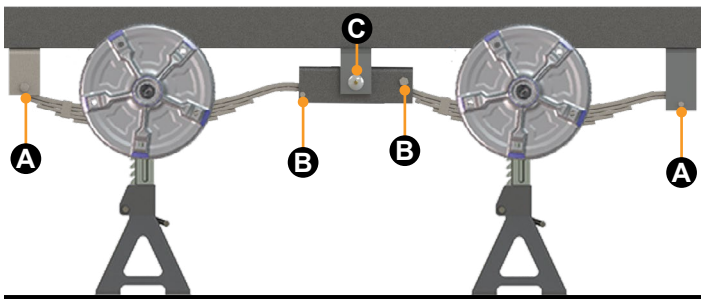


Fig.3

9. Drive out the leaf spring hanger bolts (Fig.3A) and equalizer bolt (Fig.4A), with a hammer, so that the bolt unseats from the hanger and remove.

NOTE: A pry bar may be used to remove the equalizer bolt. The equalizer should hang freely from the spring bolt.

10. Remove the equalizer (Fig.4B) from the leaf spring eyelet (Fig.4C).

11. The trailer is ready for the installation of the new LCI A/P kit.

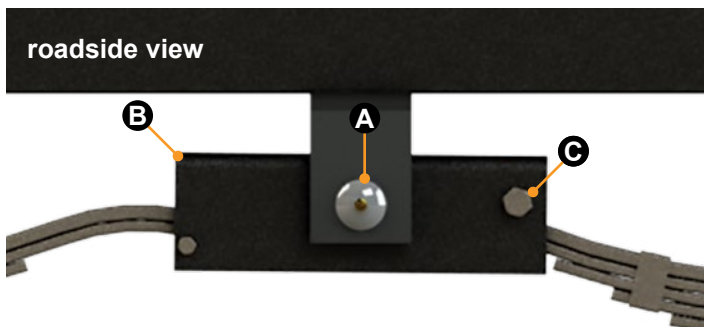


Fig.4

Installation

⚠ WARNING

THE TRAILER MUST BE SUPPORTED PER MANUFACTURER'S RECOMMENDATIONS BEFORE WORKING UNDERNEATH. FAILURE TO DO SO MAY RESULT IN DEATH OR SERIOUS PERSONAL INJURY.

A/P Kit Tandem or Triple Installation Tips

It is important that the components are attached to the vehicle frame in the proper manner. Here are some guidelines:

- The nuts should not be used to “pull” the bolt into the hanger. Instead, the bolt should be driven into the hanger using a hammer. This will fully seat the serrations of the bolt into the hanger hole and provide maximum resistance to rotation during service.
- Bolts that are free to rotate will drastically limit the service life of the hangers.
- For non-shouldered bolts, tighten the 1/8" - 18 hex locknut only snug against the hanger surface. The axle spring eye must be free to rotate on the bolt for proper suspension articulation and performance.
- Using an impact wrench without holding the other side of the bolt with a wrench can damage the serrations of the bolt.



Attaching Parts for Slipper Spring Axle Installation and Owner's Manual (For Aftermarket Applications)

Tandem or Triple Slipper Spring Axle A/P Kits

1. Insert the $\frac{5}{16}$ " hanger leaf spring bolt (Fig.5A) in the front hanger outside plate (Fig.5B), through the leaf spring eye (Fig.5C), and out the backside of the hanger plate (Fig.5D).

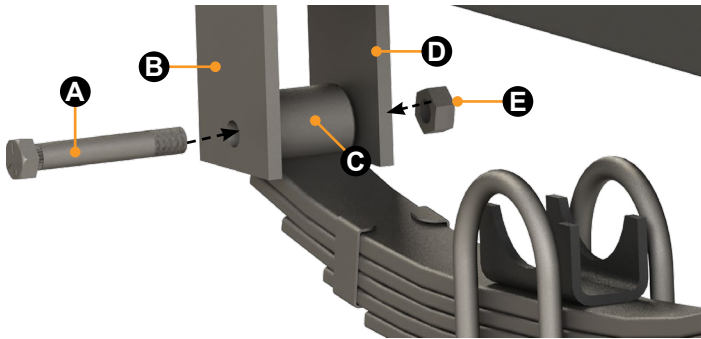


Fig.5

2. Install $\frac{5}{16}$ " nut (Fig.5E), snug the nut up to hanger face so spring eye can rotate freely.

3. Install the equalizer wet bolt (Fig.6A) through the equalizer hanger outside plate (Fig.6B), the equalizer bushing (Fig.6C), and through the equalizer hanger inside plate (Fig.6D). Be sure the bolt head (Fig.6A) is seated against the hanger outer plate surface (Fig.6B). Both the hanger bolts and equalizer wet bolt must be installed from the outside-in towards the center of the trailer chassis. This ensures that the bolt threads do not interfere with any other assemblies. This applies to bolts with or without grease fittings.

4. Thread a nut (Fig.6E) onto the exposed equalizer bolt thread until the nut seats against the hanger, snug nut up to hanger face so the equalizer can rotate freely.

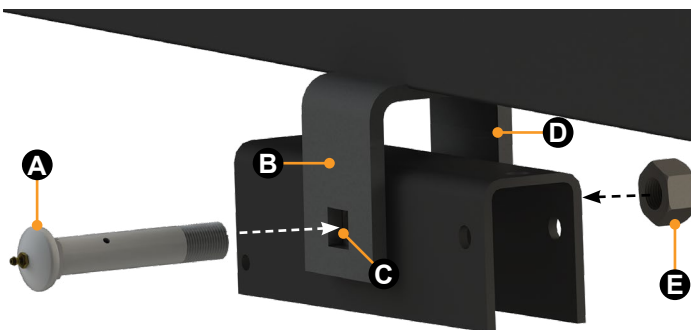


Fig.6

5. Place the axles into the normal operating position.

6. Insert the $\frac{5}{16}$ " bolt (Fig.7A) through the equalizer and underneath the slipper end of the spring leaf. Attach the $\frac{5}{16}$ " mounting nut.

7. On the opposite side of the equalizer, insert and align the spring leaf eye (Fig.7C) with the equalizer holes (Fig.7D).

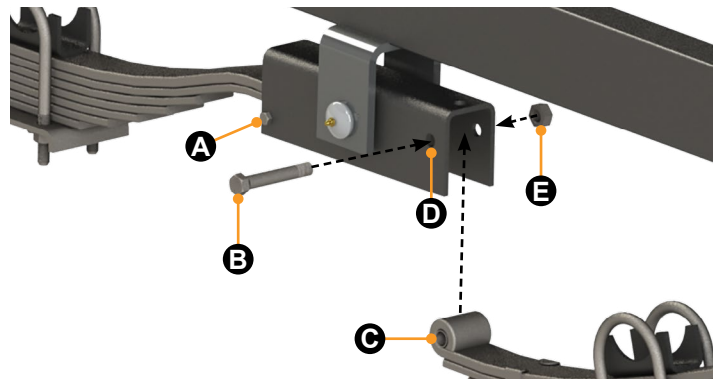


Fig.7

8. Insert the $\frac{5}{16}$ " bolt (Fig.7B) through the equalizer and the spring leaf. Attach the $\frac{5}{16}$ " mounting nut (Fig.7E).

9. Snug the nut up to hanger face so the equalizer can rotate freely.



LIPPERT
COMPONENTS®

Attaching Parts for Slipper Spring Axle Installation and Owner's Manual (For Aftermarket Applications)

10. Attach the opposite end of the spring leaf to the hanger plate. Insert the $\frac{5}{16}$ " hanger leaf spring bolt (Fig.8A) in the back hanger outside plate, through the leaf spring eye and out the backside of the hanger plate.

NOTE: Figure 8 shows a completed tandem axle.

11. If installing a Triple A/P Kit, repeat steps 5-10 for the third hanger (Fig.9B).

12. Repeat steps 1-10 or 1-11, if applicable, for the opposite side of the trailer.

NOTE: If using the triple axle greaseable bolts with grease fittings, use any multi-purpose grease marked with the NLGI code of GC-LB.



Fig.8



Fig.9

13. Apply enough grease to fully lubricate the center hanger equalizer bushing. Typically, two squirts from a manual grease gun is sufficient.

14. Reconnect electric brakes, if applicable.

15. Remount wheels.

Maintenance

Every 12 months or 36,000 miles, whichever comes first, check the equalizers and wet bolts if applicable, to be sure they are free from debris and that the nuts are visibly snugged up to hanger or equalizer faces.

If using the triple axle wet bolts with grease fittings, use any multi-purpose grease marked with the NLGI code of GC-LB.

