



LIPPERT
COMPONENTS®

Torsion Axle Riser Kit

Installation and Owner's Manual

(For Aftermarket Applications)

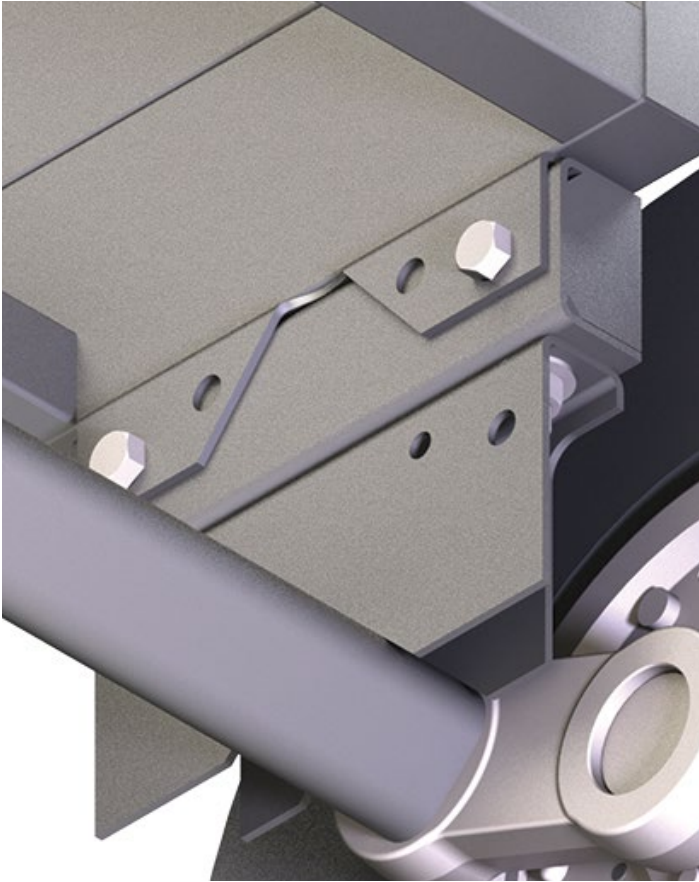


Table of Contents

Introduction	2
Safety Information	2
Resources Required	2
Kit Table	2
Preparation	3
Installation	3
Torsion Axle Riser Installation	3
Notes	4



Torsion Axle Riser Kit

Installation and Owner's Manual

(For Aftermarket Applications)

Introduction

The LCI Torsion Axle Riser Kit adds clearance for a torsion axle-equipped trailer. This Torsion Axle Riser Kit is unique to only 3500 series axles. No cross bracing is required.

Safety Information

⚠️ WARNING

MAKE SURE THE TRAILER IS SUPPORTED AT ALL FOUR CORNERS ACCORDING TO MANUFACTURER'S RECOMMENDATIONS. LIFT THE TRAILER BY THE FRAME AND NEVER THE AXLE OR SUSPENSION. DO NOT GO UNDER THE TRAILER UNLESS IT IS PROPERLY SUPPORTED. UNSUPPORTED TRAILERS CAN FALL CAUSING DEATH OR SERIOUS INJURY.

⚠️ WARNING

BE SURE TO PARK THE TRAILER ON SOLID AND LEVEL GROUND. PRIOR TO OPERATION, CLEAR ALL JACK LANDING LOCATIONS OF DEBRIS AND OBSTRUCTIONS. THE LOCATIONS SHOULD ALSO BE FREE OF SURFACE DEPRESSIONS AND MOISTURE. WHEN PARKING THE TRAILER ON EXTREMELY SOFT SURFACES, UTILIZE LOAD DISTRIBUTION PADS UNDER EACH JACK.

⚠️ CAUTION

MOVING PARTS CAN PINCH, CRUSH OR CUT. KEEP CLEAR AND USE CAUTION.

⚠️ CAUTION

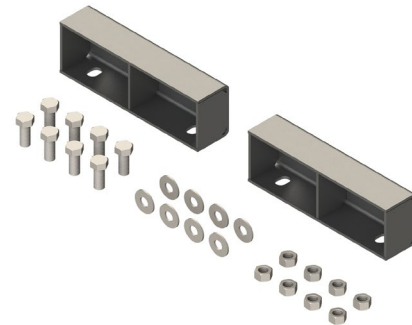
PEOPLE AND PETS SHOULD BE CLEAR OF THE TRAILER WHILE THE LEVELING SYSTEM IS OPERATED. NEVER LIFT THE TRAILER COMPLETELY OFF THE GROUND. LIFTING THE TRAILER SO THE WHEELS ARE NOT TOUCHING THE GROUND WILL CREATE AN UNSTABLE AND UNSAFE CONDITION.

Resources Required

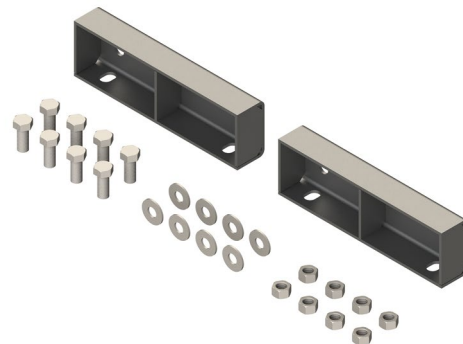
- 5/8" Wrench
- 15/16" Wrench
- 5/8" Socket

Kit Table

Part#	Description	Qty
382741	Axle Riser Kit, Square Torsion	1
•382238	Axle Riser Channel	2
•139446	Hex Bolt - 5/8" - 18 X 1 1/2"	8
•1577751	Washers - 5/8" ID X 1 1/2"	8
•125271	Nuts - 5/8" - 18	8



Part#	Description	Qty
270682	Axle Riser Kit, Diamond Torsion	1
•164888	Axle Riser Channel	2
•139446	Hex Bolt - 5/8" - 18 X 1 1/2"	8
•1577751	Washers - 5/8" ID X 1 1/2"	8
•125271	Nuts - 5/8" - 18	8





LIPPERT
COMPONENTS®

Torsion Axle Riser Kit

Installation and Owner's Manual

(For Aftermarket Applications)

Preparation

1. Raise trailer one side at a time by placing a floor jack under frame between tires or behind axle if trailer is a single axle. Lift side of trailer so tires are just off the ground. Support that side with jack stands and repeat on other side of trailer.
2. Remove wheels from axles (**Fig.1**).
3. Use the floor jack to support the axle being removed. Remove axle mounting bolts from both sides of axle and lower axle approximately 4". Disconnect brake wires.



Fig.1

Installation

Torsion Axle Riser Installation

Using $\frac{5}{8}$ " - 18 x 1.5" mounting bolts, install riser channel to frame bracket. Insert two bolts through channel-side mounting holes and frame bracket with bolt head facing outward. Insert one $\frac{5}{8}$ " washer over each bolt, then install $\frac{5}{8}$ " - 18 hex nuts and hand tighten. Torque mounting nuts to 120 ft-lbs.

1. Lift axle up to riser channel and assemble to bottom of riser channel. Insert two $\frac{5}{8}$ "-18 x 1.5" bolts through the bottom flange of riser channel and top of axle mounting bracket with bolt head inside of riser channel. Insert one $\frac{5}{8}$ " washer over each bolt, then install $\frac{5}{8}$ " - 18 hex nuts and hand tighten.

2. Torque mounting nuts to 120 ft-lbs.

3. Reconnect brake wires and add splices if necessary.

4. Repeat riser channel installation for each mounting bracket on all axles.

5. Reinstall wheels onto axles. Install lug nuts hand-tight. Following a star pattern, gradually torque lug nuts on each wheel to 120 ft-lbs max.

NOTE: Torque wheel nuts at 10, 25 and 50 miles until torque stabilizes. A periodic check during normal service is recommended.

6. Lower trailer one side at a time.

7. Hitch ball height adjustment may be necessary to make sure trailer is level.

