



# Heritage Theater Seating



## *Assembly Guide*



**⚠ CAUTION**

**MOVING PARTS CAN PINCH, CRUSH OR CUT. KEEP CLEAR AND USE CAUTION**

## Assembly

1. The seating comes with the back laying on top of the seat cushion (**Fig.1**).

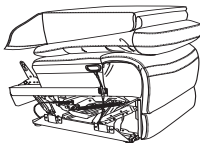


Fig.1

2. Lift the seat back and align with the brackets on the seat base (**Fig.2 and Fig.3**).

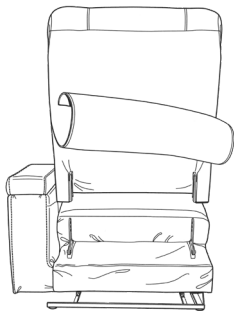
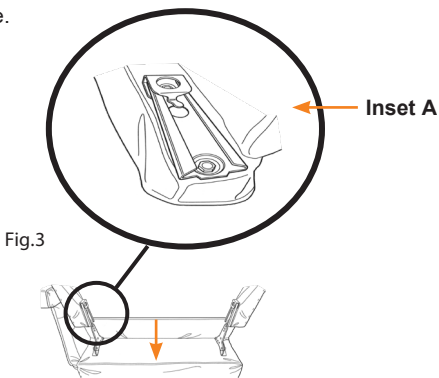
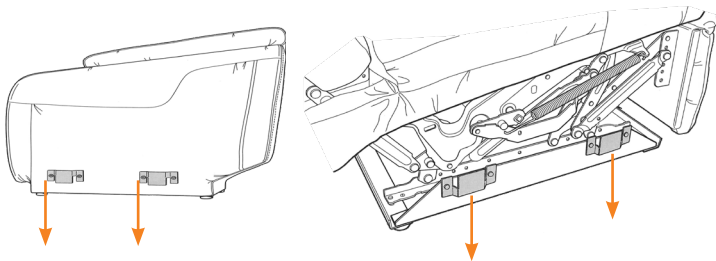


Fig.2

3. The seat back is fully installed when the clips on the seat back (**Fig.3 Inset A**) slide down over the bottom brackets on the seat base and click into place.



4. Every furniture component locks into place with each adjacent piece. To lock the components, line up the side brackets and slide them down (**Fig.4**).



5. Plug in power after all pieces have been assembled and electrical connections have been made (**Fig.5**).

**NOTE:** If you purchased a center console, you will have a wireless phone charger. Located at the bottom of the base, there will be a male plug, assemble to the female power port. Plug into wall for power.

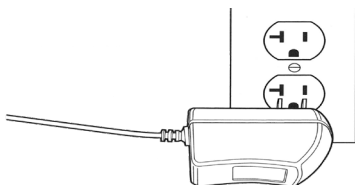


Fig.5

---

Manual information may be distributed as a complete document only, unless Lippert provides explicit consent to distribute individual parts.

All manual information is subject to change without notice. Revised editions will be available for free download at [lippert.com](http://lippert.com). Manual information is considered factual until made obsolete by a revised version.

Please recycle all obsolete materials and contact Lippert with concerns or questions.

