



FLOW MAXTM FAUCET
OWNER'S MANUAL

TABLE OF CONTENTS

Introduction	2
Safety	2
Operation	3
Fixed Faucet	3
Pull Down Faucet	4
Maintenance	5
Troubleshooting	5

Introduction

This manual outlines the operation of the Flow Max Faucets.

Additional information about this product can be obtained from lci1.com/support or by downloading the free LippertNOW app in Apple App Store® for iPhone® and iPad® and also on Google Play™ for Android™ users. App Store® and iPad® are registered trademarks of Apple Inc. Google Play™ and Android™ are trademarks of Google Inc.

For information on the assembly or individual components of this product, please visit:

<https://support.lci1.com/kitchen>

Note: Images used in this document are for reference only when assembling, installing and/or operating this product. Actual appearance of provided and/or purchased parts and assemblies may differ.

Safety

Read and understand all instructions before installing or operating this product. Adhere to all safety labels.

This manual provides general instructions. Many variables can change the circumstances of the instructions, i.e., the degree of difficulty, operation and ability of the individual performing the instructions. This manual cannot begin to plot out instructions for every possibility, but provides the general instructions, as necessary, for effectively interfacing with the device, product or system. Failure to correctly follow the provided instructions may result in death, serious personal injury, severe product and/or property damage, including voiding of the Lippert limited warranty.

WARNING

The "WARNING" symbol above is a sign that a procedure has a safety risk involved and may cause death or serious personal injury if not performed safely and within the parameters set forth in this manual.

WARNING

Failure to follow instructions provided in this manual may result in death, serious personal injury and/or severe product and property damage, including voiding of the component warranty.

CAUTION

The "CAUTION" symbol above is a sign that a safety risk is involved and may cause personal injury and/or product or property damage if not safely adhered to and within the parameters set forth in this manual.

CAUTION

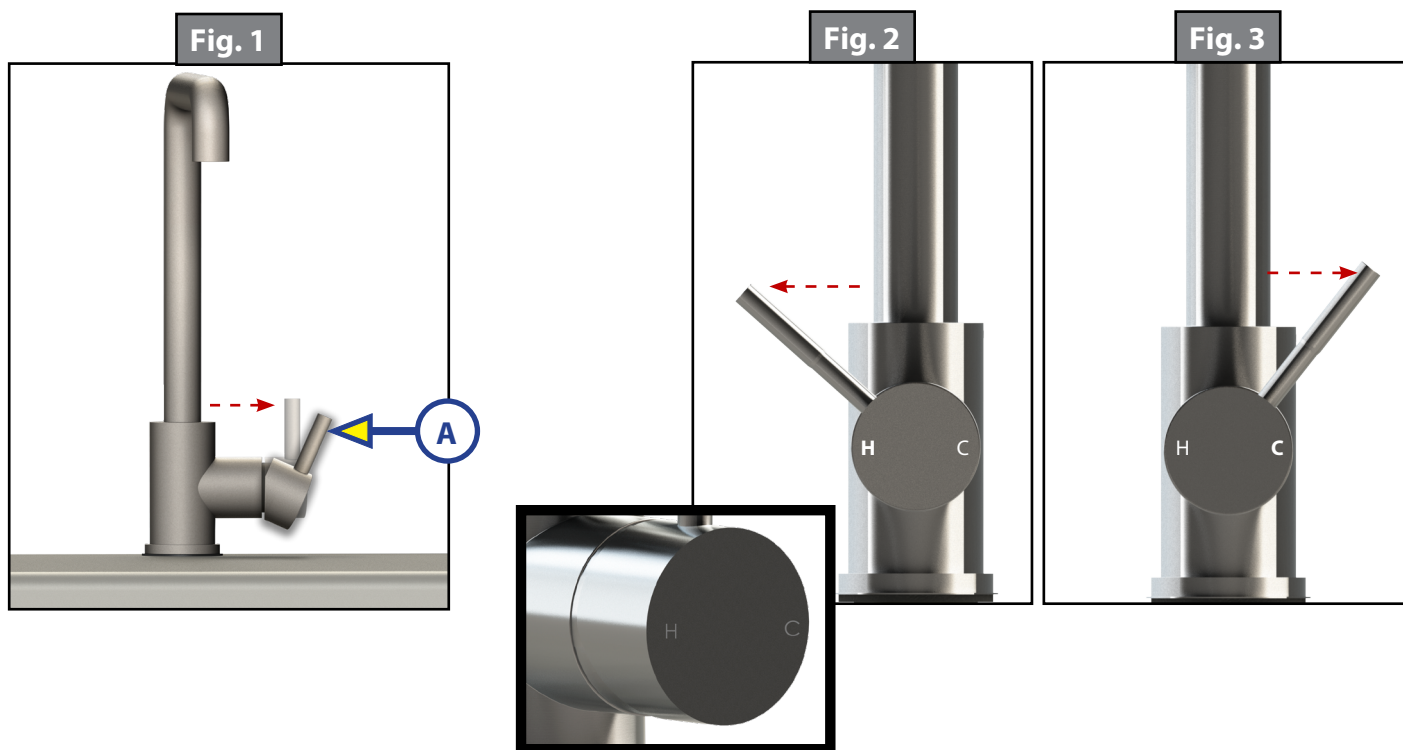
Always wear eye protection when performing service, maintenance or installation procedures. Other safety equipment to consider would be hearing protection, gloves and possibly a full face shield, depending on the nature of the task.

Operation

Fixed Faucet

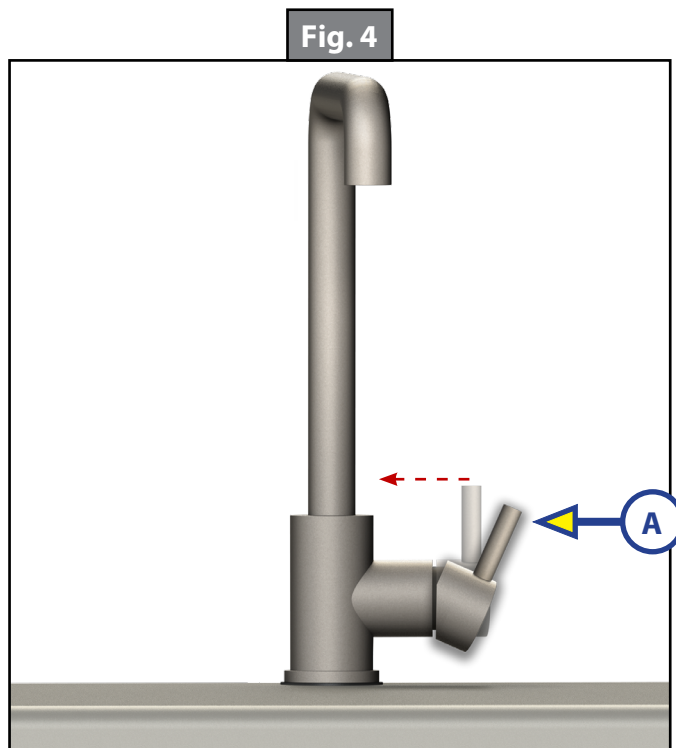
1. Pull the lever away from the faucet to turn it on (Fig. 1A).
2. Move the lever forward for hot water (Fig. 2) and backward for cold water (Fig. 3).

Note: Depending on faucet model direction of the faucet handle may differ.



Note: Located on the front of the lever is a "H" for hot water and a "C" for cold water. Move the lever in the direction of the desired temperature.

3. Push the lever in towards the faucet to shut the water off (Fig. 4A).



Pull Down Faucet

1. Pull the lever away from the faucet to turn it on (Fig. 5A).
2. Move the lever forward for hot water (Fig. 6) and backward for cold water (Fig. 7).

Note: Located on the front of the lever is a “H” for hot water and a “C” for cold water. Move the lever in the direction of the desired temperature.

Fig. 5

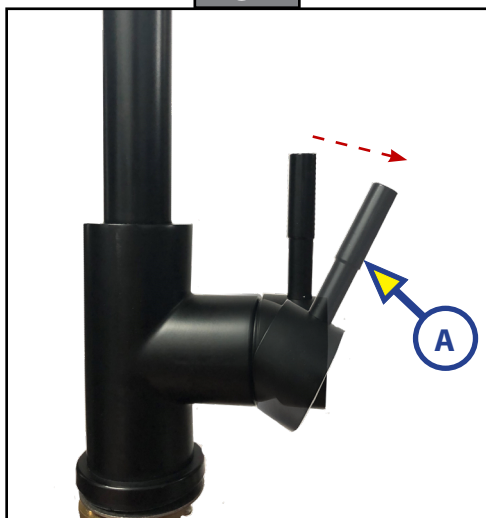


Fig. 6

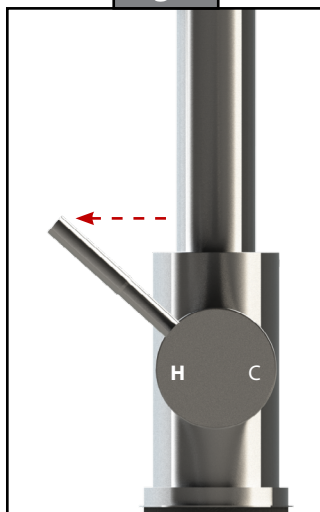
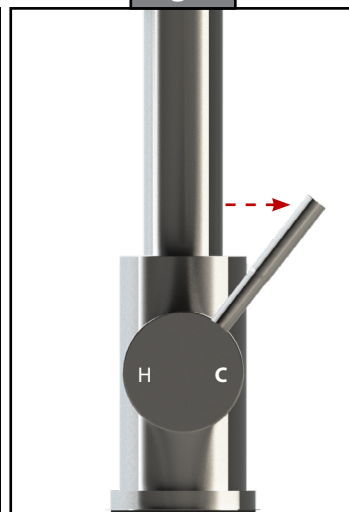


Fig. 7



3. To use the spray wand pull down and out on the faucet head.
4. Press and release the button on the lower portion of the faucet head (Fig. 8A) for spray mode. Press and release the button again for stream mode.
5. Replace the faucet head by gently guiding the hose back into the faucet neck and insert into clip, if applicable.
6. To shut the water off push the lever in towards the faucet (Fig. 9A).

Fig. 8

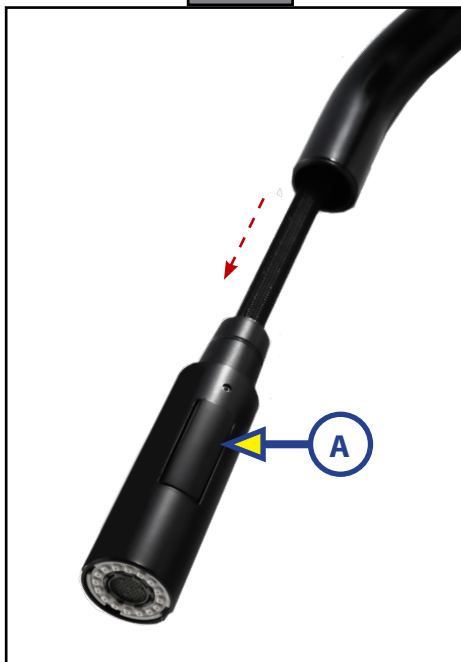
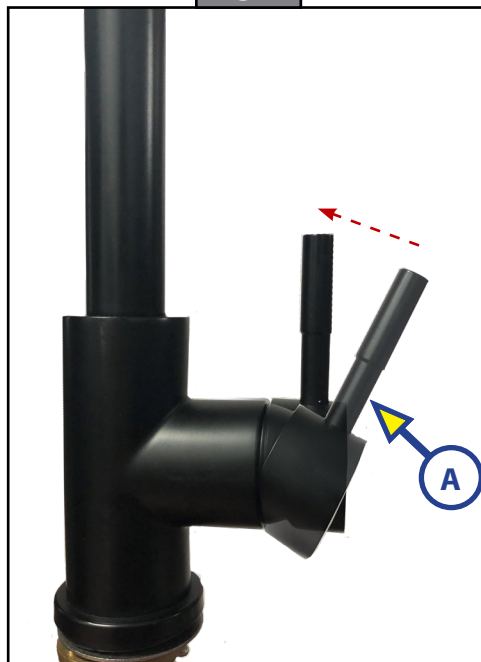


Fig. 9



Maintenance

1. Clean the faucet periodically.
2. Apply a coat of toothpaste to a wet soft-bristle toothbrush.
Note: Avoid abrasive cleaners, steel wool and chemical solutions as these will dull the finish and void the warranty.
3. Brush over the surface of the faucet.
4. After cleaning, rinse the faucet thoroughly with water, washing away all the remains of the toothpaste.
5. Rub dry with a soft cloth.



Unit MUST be winterized per manufacturer's recommendations. Failure to winterize the unit could damage the faucets and other plumbing system components.

Troubleshooting

Vibration caused by driving or transporting can loosen plumbing and hardware. Check for loose system components. Many symptoms can be resolved by tightening hardware. Use care not to over-tighten. Refer to the chart for troubleshooting tips.

What is happening?	Why?	What should be done?
Irregular Flow	Blockage at the screen	For further instructions reference: TI-400 Flow Max Faucets Low Water Flow Troubleshooting
	Clogged cartridge	For further instructions reference: TI-394 Flow Max Faucets Cartridge Replacement
There is a leak from the aerator when the faucet is on.	The aerator does not fit correctly on the faucet.	Remove aerator and reinstall.
The aerator has irregular or reduced water flow.	The aerator is dirty.	Remove aerator and clear debris.



The contents of this manual are proprietary and copyright protected by Lippert. Lippert prohibits the copying or dissemination of portions of this manual unless prior written consent from an authorized Lippert representative has been provided. Any unauthorized use shall void any applicable warranty. The information contained in this manual is subject to change without notice and at the sole discretion of Lippert. Revised editions are available for free download from lippert.com.

Please recycle all obsolete materials.

For all concerns or questions, please contact Lippert
Ph: 432-LIPPERT (432-547-7378) | Web: lippert.com | Email: customerservice@lci1.com