



PSX1TM
(POWER STABILIZING SYSTEM)
OWNER'S MANUAL

TABLE OF CONTENTS

System Description	2
Safety Information	2
Operation	3
Preparation.....	3
Extending Stabilizers.....	3
Retracting Stabilizers.....	3
Stabilizing System.....	4
Manual Override.....	4
System Maintenance	5
Mechanical Maintenance.....	5
Electrical Maintenance.....	5
Troubleshooting	5

System Description

The PSX1™ is a 12V DC electric motor-driven system. The electric motor drives Acme-threaded screws to extend and retract the stabilizer legs to stabilize the trailer.

The stabilizing system can be installed on travel trailers and 5th Wheels. Travel trailer options include both front and rear stabilizers or a rear stabilizer only, while 5th Wheels typically utilize only a rear stabilizer. The standard duty stabilizer is suitable for all trailers.

There are no serviceable parts within the electric motor. If a motor fails, it must be replaced. Disassembly of the motor voids the warranty. Mechanical portions of the PSX1™ are replaceable. Contact Lippert to obtain replacement parts.

For information on the assembly or individual components of this product, please visit:

<https://support.lci1.com/stabilization-support-electric-stabilizer>.

NOTE: Images used in this document are for reference only when assembling, installing and/or operating this product. Actual appearance of provided and/or purchased parts and assemblies may differ.

Safety Information

The PSX1™ is intended for the purpose of stabilizing the trailer after the trailer has been leveled. The use of this system for any reason other than which it is intended is prohibited by Lippert's Limited Warranty and may result in serious personal injury or death. The PSX1™ is designed as a stabilizing component system and should not be used to provide service under the trailer for any reason such as changing tires or repairing or replacing any components beneath the trailer.

WARNING

The “WARNING” symbol above is a sign that an installation procedure has a safety risk involved and may cause death, serious personal injury or severe product or property damage if not performed safely and within the parameters set forth in this manual. Always wear eye protection when performing this installation procedure. Other safety equipment to consider would be hearing protection, gloves, and possibly a full face shield, depending on the nature of the installation procedure.

WARNING

Lippert Components Inc. recommends that a trained professional be employed to change the tires on the trailer. Any attempts to change tires or perform other service while trailer is supported by the PSX1 could result in death, serious personal injury or severe product or property damage.

Operation

⚠ WARNING

Failure to act in accordance with the following may result in death, serious personal injury or severe product or property damage. Always make sure the stabilizer area is clear of pets, people and objects before and during operation of the system. Always keep away from the stabilizer legs when in operation.

⚠ CAUTION

The PSX1 is to be used for stabilizing the trailer, not leveling the trailer. The stabilizer legs should never be extended longer than two seconds beyond initial contact with the ground.

⚠ CAUTION

Moving parts can pinch, crush or cut. Keep clear and use caution.

⚠ CAUTION

Never lift the trailer completely off the ground. Lifting the trailer completely off the ground creates an unstable condition that could result in property damage and personal injury.

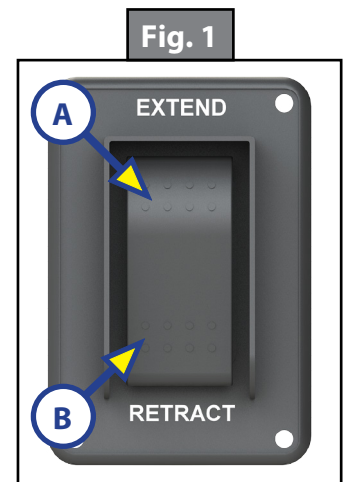
Preparation

The PSX1 is intended for the purpose of stabilizing the trailer after the trailer has been leveled.

1. Make sure the trailer is on solid, level ground.
2. Clear all stabilizer leg landing locations of debris and obstructions. Locations should also be free of depressions.
3. When parking the trailer on extremely soft surfaces, utilize load distribution pads under each stabilizer leg.
4. People and pets should be clear of trailer while operating the stabilizers.

Extending Stabilizers

1. Make sure the trailer is level.
2. Verify the battery is fully charged and hooked up to the electrical system.
3. Press and hold "EXTEND" on the switch (Fig. 1A) for the rear stabilizer until the footpads of the stabilizer legs contact the ground and the rear of the trailer is stabilized. Then release the switch.
4. If a front stabilizer is installed, press and hold "EXTEND" on the switch (Fig. 1A) for the front stabilizer until the footpads of the stabilizer legs contact the ground and the front of the trailer is stabilized. Then release the switch.



⚠ CAUTION

Once the stabilizer legs have been extended, do not use the tongue jack on a travel trailer or the landing gear on a 5th Wheel. Damage to the stabilizer legs can occur when lifting or leveling the trailer after the stabilizer legs have been extended. Doing so will void the warranty of the stabilizers.

Retracting Stabilizers

1. Verify the battery is fully charged and hooked up to the electrical system.
2. If a front stabilizer is installed, press and hold "RETRACT" on the switch (Fig. 1B) for the front stabilizer until the stabilizer legs are fully retracted. Then release the switch.
3. Press and hold "RETRACT" on the switch (Fig. 1B) for the rear stabilizer until the stabilizer legs are fully retracted. Then release the switch.

Stabilizing System

By keeping the "EXTEND" switch (Fig. 1A) engaged for one to two seconds after the legs' footpads make contact with the ground, the trailer will be stabilized and ready for use.

In the event the system shuts off while trying to stabilize the trailer, an in-line auto-reset circuit protection has tripped and will reset within 10 seconds. This is an indication the PSX1™ is not being used as intended and is trying to lift too much weight.

NOTE: Make sure the stabilizer legs are fully retracted before moving the trailer.

Manual Override

The PSX1 comes with a manual override system located on the stabilizer end opposite the electric motor (Fig. 2A).

To manually operate the stabilizer:

1. Disconnect one of the wire leads from the motor to prevent backfeeding the motor.
2. Next, insert the 1/2" diameter manual crank handle (Fig. 3) over the coupler and pin at the end of the stabilizer (Fig. 2A). The slot in the end of the crank handle (Fig. 3) accommodates the pin on the coupler (Fig. 2A) to allow the manual extension/retraction of the stabilizer legs.

⚠ CAUTION

The gears can be stripped if the stabilizer legs are retracted/extended to the fullest extent and the operator continues to rotate the manual override. Do NOT use a power tool to extend or retract stabilizers.

3. Rotate the crank handle counterclockwise to extend or clockwise to retract the stabilizer legs.

Fig. 2

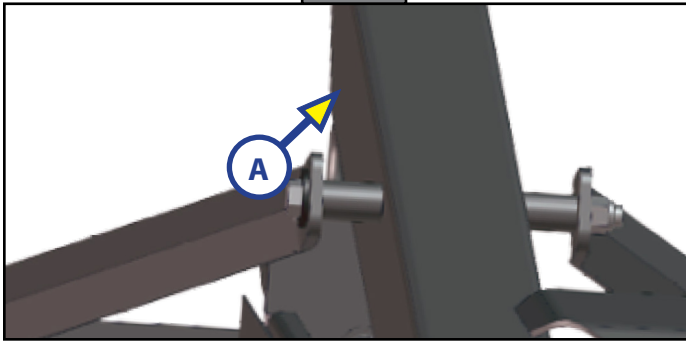
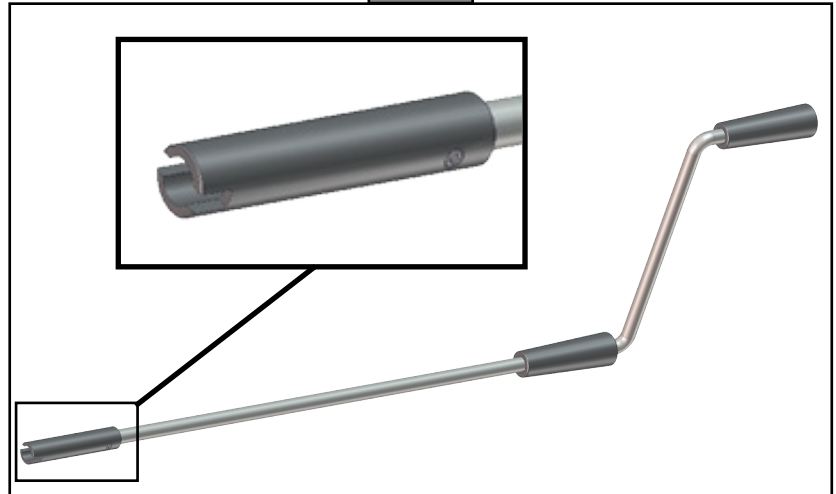


Fig. 3



System Maintenance

WARNING

Do not work on the stabilizer unless the battery is disconnected. Failure to act in accordance with the following may result in death, serious personal injury or severe product or property damage.

Mechanical Maintenance

It is recommended that when operating in harsh environments, e.g. road salt or ice buildup, the moving parts be kept clean. They can be washed with mild soap and water. The ACME screw is precoated with grease. If the screw is cleaned, it may be necessary to add grease to the screw to ensure smooth stabilizer operation.

CAUTION

Operating the stabilizer without grease on the screw could lead to product failure.

Electrical Maintenance

For optimum performance, the system requires full battery current and voltage. The battery must be maintained at full capacity. Other than good battery maintenance, check the terminals and other connections at the battery, the control switch and the electric motors for corrosion and loose or damaged terminals. Check motor leads under the trailer chassis. Since these connections are subject to damage from road debris, make sure they are in good condition.

Troubleshooting

What Is Happening?	Why?	What Should Be Done?
System shuts off	Too much weight.	Circuit protection will reset in 10 seconds.
Switch does not activate system	Low voltage.	Test battery voltage under load. Charge or replace. Use Manual Override.
	Damaged or disconnected wiring.	Check wiring. Repair or replace. Use Manual Override.



The contents of this manual are proprietary and copyright protected by Lippert Components, Inc. (LCI). LCI prohibits the copying or dissemination of portions of this manual unless prior written consent from an authorized LCI representative has been provided. Any unauthorized use shall void any applicable warranty. The information contained in this manual is subject to change without notice and at the sole discretion of LCI. Revised editions are available for free download from lippert.com.

Please recycle all obsolete materials.

For all concerns or questions, please contact
Lippert Components, Inc.

Ph: 432-LIPPERT (432-547-7378) | Web: lippert.com | Email: customerservice@lci1.com