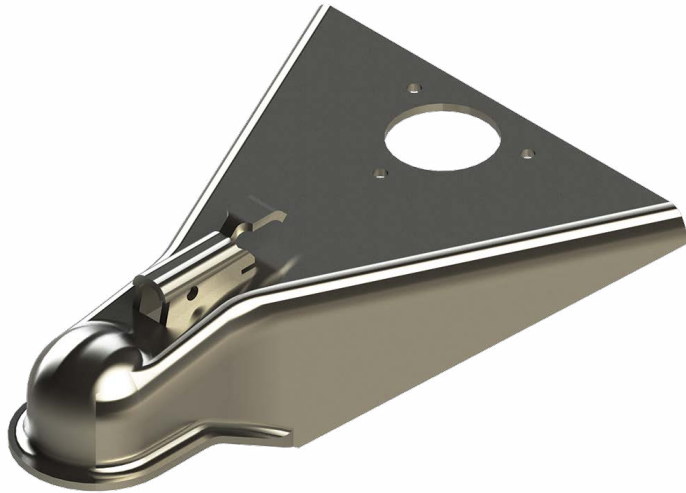




**LIPPERT**  
COMPONENTS®



# A-Frame Coupler

## Installation and Owner's Manual

(For Aftermarket Applications)

### Introduction

The purpose of this document is to replace an A-frame coupler.

Additional information about this product can be obtained from [lci1.com/support](http://lci1.com/support) or by using the myLCI app. Replacement components can be ordered from <https://store.lci1.com/> or by using the myLCI app. The myLCI app is available for free on iTunes® for iPhone® and iPad® and also on Google Play™ for Android™ users. iTunes®, iPhone®, and iPad® are registered trademarks of Apple Inc. Google Play™ and Android™ are trademarks of Google Inc.

### Parts List

Part#	Description	Qty
<a href="#">135430</a>	A-Frame Coupler	1

### Table of Contents

Introduction .....	1
Parts List .....	1
Safety Information .....	2
Resources Required .....	2
Preparation .....	2
Procedure .....	2
Lower Jack Plate Replacement .....	3
Cleanup .....	4



# A-Frame Coupler

## Installation and Owner's Manual

(For Aftermarket Applications)

## Safety Information

### ⚠ WARNING

SUPPORT CHASSIS ACCORDING TO MANUFACTURER'S RECOMMENDATIONS. FAILURE TO PROPERLY SUPPORT CHASSIS COULD RESULT IN DEATH, SERIOUS PERSONAL INJURY, SEVERE PRODUCT OR PROPERTY DAMAGE.

## Resources Required

- Welder
- Welding PPE (helmet, gloves, sleeves, etc.)
- Safety glasses
- Clamps
- $\frac{9}{16}$ " socket

## Preparation

1. Support the trailer according to OEM recommendations.
2. Remove the footpad from the tongue jack.
3. Release the tongue jack from the coupler plate by unfastening the three  $\frac{3}{8}$ " bolts with the  $\frac{9}{16}$ " socket.

**NOTE:** Red lines with black borders indicate where welding is to occur. Orange lines indicate where material is being removed, either by cutting, grinding or some other method.

## Procedure

1. Remove the coupler (**Fig.1A**) from the A-frame (**Fig.2A**) by cutting the existing welds.
2. Grind down any rough edges after removing the components. All areas should be smooth before continuing.

**NOTE:** When cutting off the coupler, do not cut into the A-frame. Make sure to leave enough material to be ground down.

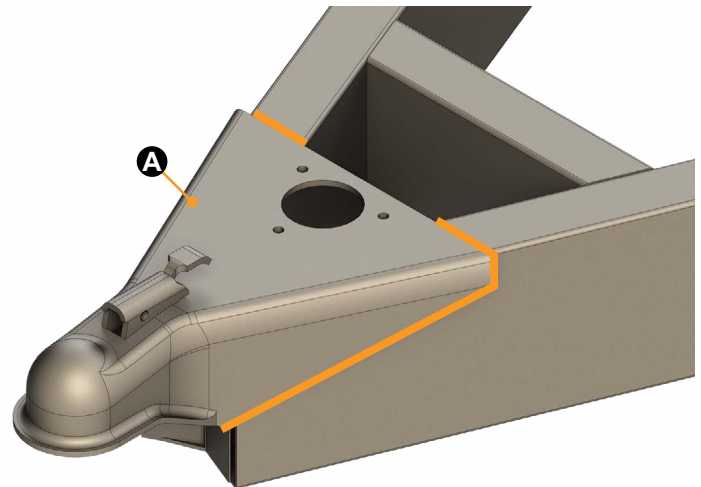


Fig.1

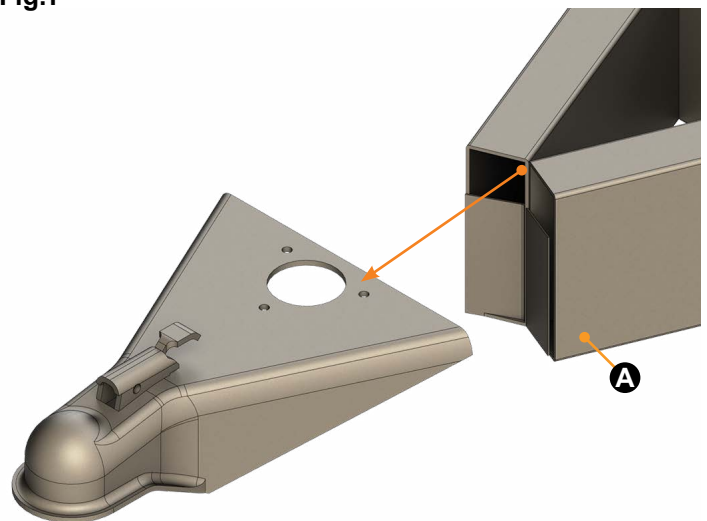


Fig.2



# A-Frame Coupler

## Installation and Owner's Manual

(For Aftermarket Applications)

3. Weld the coupler (**Fig.3A**) back onto the A-frame (**Fig.4**).

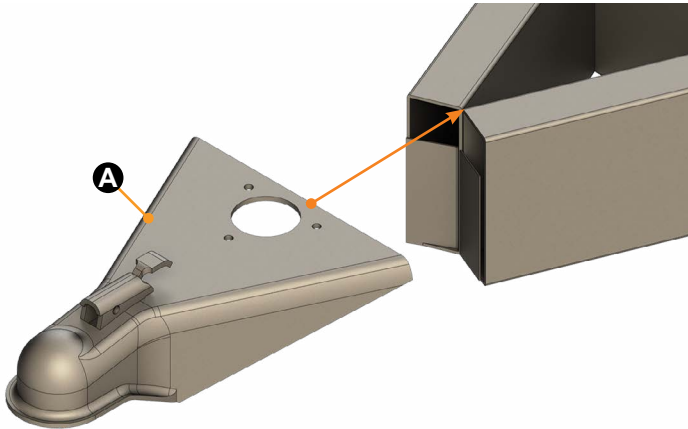


Fig.3

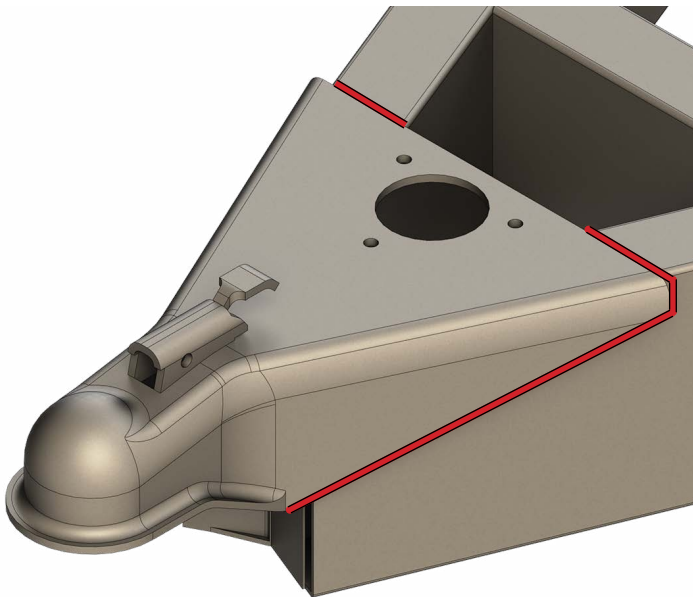


Fig.4

### Lower Jack Plate Replacement

**NOTE:** If the lower jack plate (**Fig.5A**) is not damaged, it is acceptable to keep the same lower jack plate.

**NOTE:** If the tongue jack does not line up with the lower jack plate as instructed in Step 1, replace the lower jack plate.

1. Place the tongue jack through the coupler and line the tongue jack up with the lower jack plate.

2. Remove the lower jack plate (**Fig.5A**) from the A-frame (**Fig.5B**) by cutting the existing welds.

3. Grind down any rough edges after removing the components. All areas should be smooth before continuing.

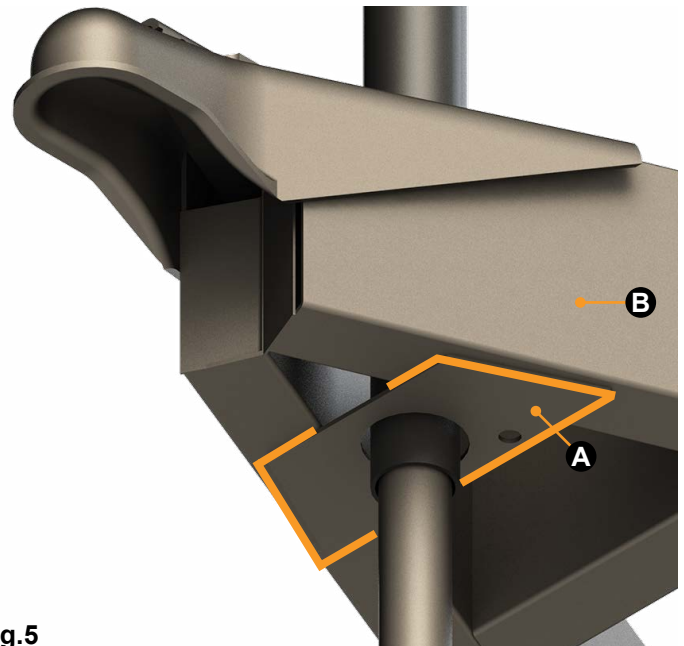


Fig.5



LIPPERT  
COMPONENTS®

## A-Frame Coupler Installation and Owner's Manual (For Aftermarket Applications)

4. Using the tongue jack as a guide (not shown for clarity), insert the replacement lower jack plate onto the tongue jack. Then position the lower jack plate onto the A-frame (Fig.6).

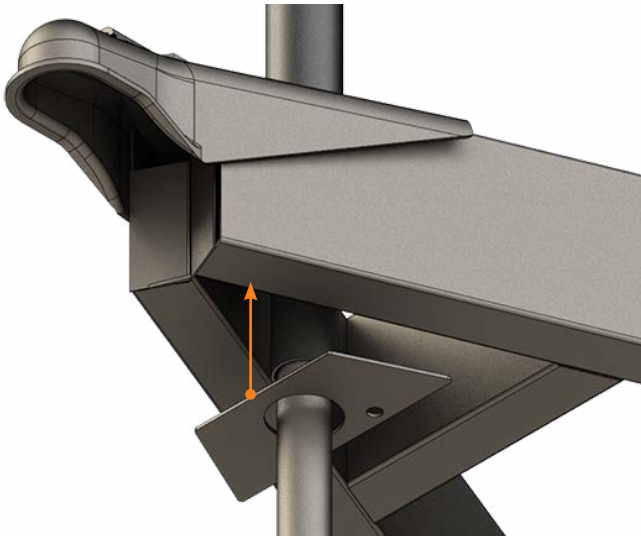


Fig.6

5. Weld the replacement lower jack plate (Fig.7A) onto the underside of the A-frame (Fig.7B).

**NOTE:** Take care to maintain a perfect right angle with the tongue jack, so that the tongue jack does not angle unnecessarily once the lower jack plate is mounted.

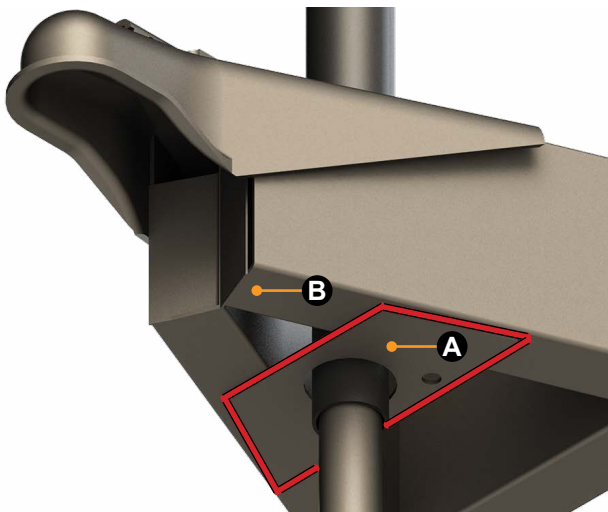


Fig.7

## Cleanup

1. Inspect all welds once they have cooled. Make sure weld surfaces are smooth. Clean up any that are necessary.
2. Verify the functionality of the new coupler after installation is complete.
3. Touch up any blemished areas with black spray paint.
4. Re-install the tongue jack per the manufacturer's instructions.



LIPPERT  
COMPONENTS®

Manual information may be distributed as a complete document only, unless Lippert Components provides explicit consent to distribute individual parts.

All manual information is subject to change without notice. Revised editions will be available for free download at [lci1.com](http://lci1.com). Manual information is considered factual until made obsolete by a revised version.

Please recycle all obsolete materials and contact Lippert Components with concerns or questions.