



LIPPERT  
COMPONENTS

# THOMAS PAYNE® CUPHOLDER OPERATION GUIDE

QR-053

## INTERIORS

### Introduction

The purpose of this document is to detail operation of the power cupholders located in Thomas Payne recliners.

**NOTE:** Raffel Systems replaced eMoMo Technology Co. as the cupholder vendor effective Jan. 1, 2019.

### Power Cupholders

#### Raffel cupholders

- 785445 - Power Cupholder: Heat, light and massage
- 785446 - Power Cupholder: Open, close, light, heat and massage

#### eMoMo cupholders

- 354493 - Power Cupholder: Light and heat
- 354494 - Power Cupholder: Light, heat and massage
- 376247 - Power Recliner Cupholder: Light, open, close, massage and heat
- 643233 - Q-Cupholder: Cold/hot, heat, open, close, massage and light
- 695074 - Power Recliner Cupholder (Rail lights): Light, open, close, massage and heat
- 695075 - Q-Cupholder (No cold/hot): Heat, open, close, massage and light
- 729242 - Double Tap Lighting Cupholder with Blue Light Ring
- 729243 - Double Tap Lighting Cupholder with White Light Ring
- 733361 - Q-Cupholder with Round Connector: Cold/hot, heat, open, close, massage and light
- 733365 - Q-Cupholder with Round Connector (no cold/hot): Heat, open, close, massage and light

### Safety

#### CAUTION

The "CAUTION" symbol above is a sign that a procedure has a risk involved that may cause personal injury and/or product damage if not performed safely and within the parameters set forth within this manual.

#### CAUTION

Users should not touch the bottom of the cupholder if a cup heating function is active on the Q-cupholders. The peak temperature of the warming cupholder may cause burns.

### Operation

The power cupholders are intended for indoor use only. Sun exposure, moisture and extreme temperatures should be avoided.

If the performance of the power recliner function is choppy or inconsistent, make sure to accurately press each button during use. For the cupholder to operate correctly, only one button can be pressed at a time.

## INTERIORS

### Raffel Systems

The cupholders have multiple functions represented by buttons with an icon (Fig. 1).

Fig. 1

| Callout | Function              |
|---------|-----------------------|
| A       | Footrest up (open)    |
| B       | Footrest down (close) |
| C       | Light                 |
| D       | Heat                  |
| E       | Massage               |

Pictured is Cupholder Part # 785446.



For better performance, press the buttons with the pad of the finger and not the tip.

**OPEN:** Press and hold the open icon (Fig. 1A) to raise the recliner's footrest. The movement will stop when the button is no longer pressed or the footrest has reached its maximum extension.

**CLOSE:** Press and hold the close icon (Fig. 1B) to lower the recliner's footrest. The movement will stop when the button is no longer pressed or the footrest has returned to its starting position.

**LIGHT:** Press light icon (Fig. 1C) to turn on the light ring inside the cupholder and the LED lights on the floor. Press again to turn the lights off. The lighting function will shut down after 30 minutes of operation.

**HEAT:** Press the heat icon (Fig. 1D) once and the heating pad will be on the high setting. Press again and the heat icon dims and the heating pad is on the low setting. Press the heat icon again and the heating pad will turn off. If not manually turned off, the heating function will shut down after 30 minutes of operation.

**MASSAGE:** Press the massage icon once (Fig. 1E) and the vibrators will be on the high setting. Press again and the massage icon dims and the vibrators are on the low setting. Press the massage icon again and the massage function will turn off. The massage function will remain on for 30 minutes or until it is turned off.

**INTERIORS**

## Replacing Cupholder Assembly

1. Remove rubber coaster from the bottom of the cupholder (Fig. 2).

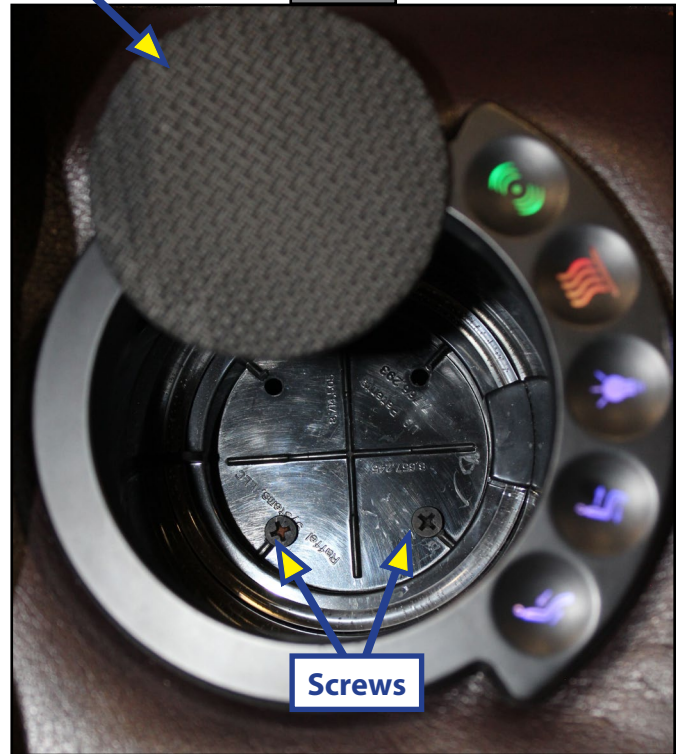
**NOTE:** A knife or other tool with a flat edge may be necessary to pry up the rubber coaster.

2. Using a Phillips screwdriver, remove the screws securing the cupholder to the recliner (Fig. 2). Save screws for reuse.
3. Pull out the assembly and unplug it from the control box and connectors.

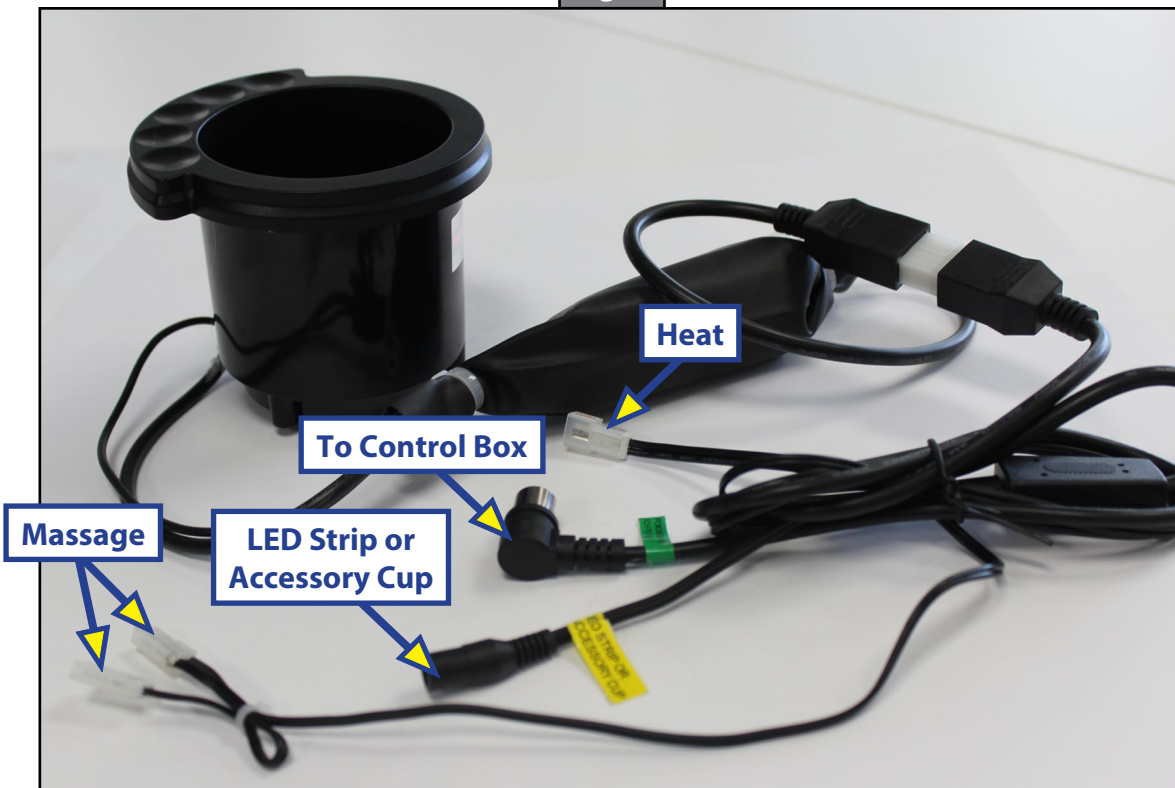
**NOTE:** When removing the old assembly, take note of where the wires and connectors are located.

4. Plug in new assembly (Fig. 3).
5. Reuse the previously-removed screws to secure the cupholder assembly to the recliner.
6. Replace rubber coaster.

**Rubber Coaster** **Fig. 2**



**Fig. 3**





LIPPERT  
COMPONENTS

# THOMAS PAYNE® CUPHOLDER OPERATION GUIDE

QR-053

## INTERIORS

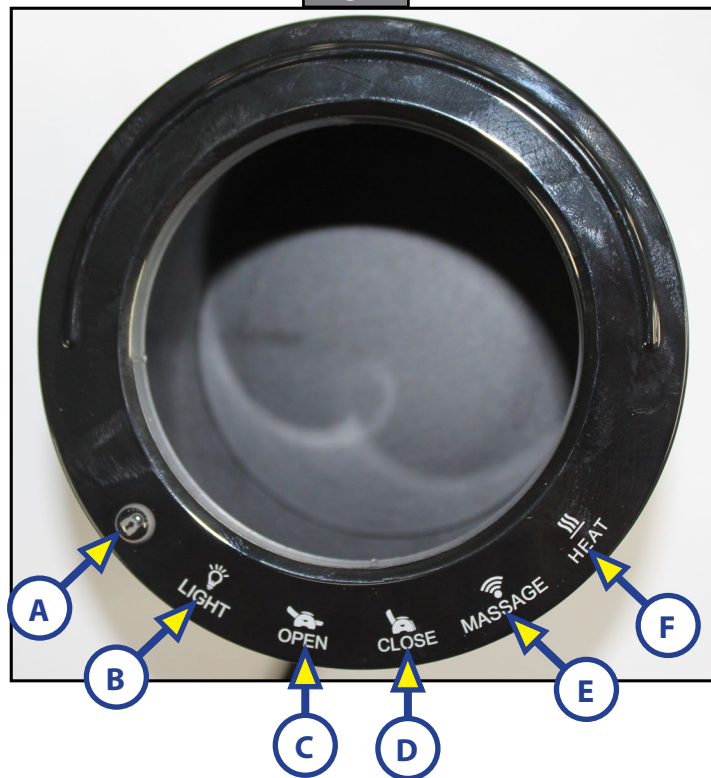
### eMoMo Technology Co.

The cupholders with rings have varied functions represented by buttons with an icon (Fig. 4). All buttons except the HEAT button are continuously illuminated. The HEAT button will light up when that function is active.

Fig. 4

| Callout | Function              |
|---------|-----------------------|
| A       | Lock                  |
| B       | LIGHT                 |
| C       | OPEN - Footrest up    |
| D       | CLOSE - Footrest down |
| E       | MASSAGE               |
| F       | HEAT                  |

Pictured is Cupholder Part # 376247.



**LOCK (Padlock):** Press the padlock icon button (Fig. 4A) to turn on the lock function. When cupholder is locked, none of the buttons will operate. Press the padlock icon again to unlock.

**LIGHT:** Press the LIGHT icon button (Fig. 4B) to turn on the light ring inside the cupholder and LED lights on the floor. Press again to turn lights off.

**NOTE:** Some Forest River Millersburg units do not have LED lights on the floor.

**OPEN:** Press and hold the OPEN icon button (Fig. 4C) to raise the recliner's footrest. The movement will stop when the button is no longer pressed or the footrest has reached its maximum extension.

**CLOSE:** Press and hold the CLOSE icon button (Fig. 4D) to lower the recliner's footrest. The movement will stop when the button is no longer pressed or the footrest has returned to its starting position.

**MASSAGE:** Press MASSAGE icon button (Fig. 4E) to turn on the vibrators. Press again to turn them off. The vibrators will shut down in 30 minutes if not manually turned off.

**HEAT:** Press HEAT icon button (Fig. 4F) to turn on the heating pad function. Press again to turn off heating pad. The temperature of the heating pad is about 10° F warmer than the seat not occupied. If not manually turned off, the heating function will shut down after one hour of operation.



LIPPERT  
COMPONENTS

# THOMAS PAYNE® CUPHOLDER OPERATION GUIDE

QR-053

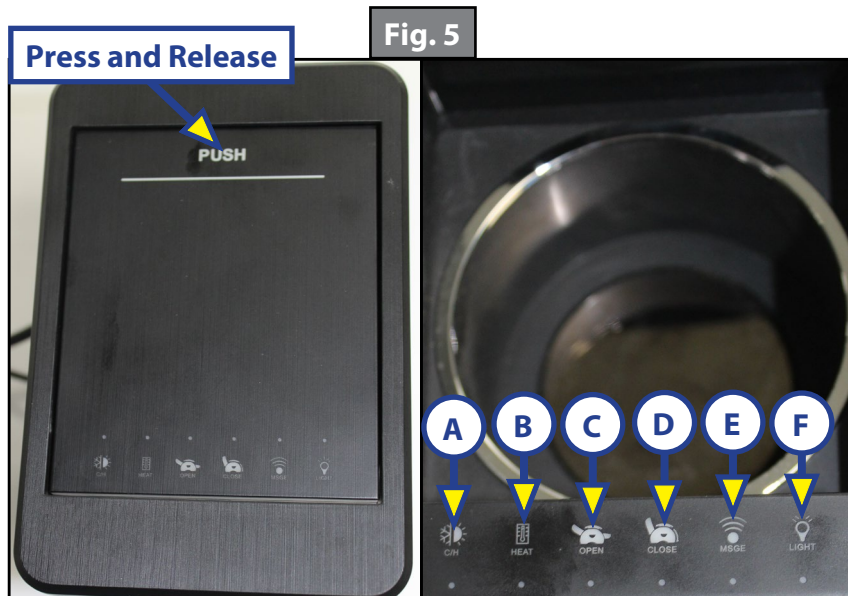
## INTERIORS

### Q-Cupholders

The Q-cupholders are covered. Gently push the top of the cupholder cover and then release (Fig. 5). The cover will open. The active functions are noted when the dots below the functions are illuminated (Fig. 5).

| Callout | Function              |
|---------|-----------------------|
| A       | C/H - Cold/hot        |
| B       | HEAT - Heating pad    |
| C       | OPEN - Footrest up    |
| D       | CLOSE - Footrest down |
| E       | MSGE - Massage        |
| F       | LIGHT/Lock            |

Pictured is Cupholder Part # 643233.



**C/H (Combined cold/hot):** Press C/H button (Fig. 5A) one time to start the cooling function and press the button twice to activate the heating function. Pressing the button a third time will turn off the cooling/heating. The cooling function can cool the cupholder to 15-20° lower than the surrounding temperature, and it will shut down automatically after two hours if it is not manually turned off. The peak temperature of the heating function is about 122° F. When the heating function is on, do not touch the bottom of the cupholder because it may cause burns. If not manually turned off, the heating function will shut down after one hour.

**HEAT:** Press HEAT icon button (Fig. 5B) to turn on the heating pad function. Press again to turn off heating pad. The temperature of the heating pad is about 10° F warmer than the seat not occupied. If not manually turned off, the heating function will shut down after one hour of operation.

**OPEN:** Press and hold the OPEN icon button (Fig. 5C) to raise the recliner's footrest. The movement will stop when the button is no longer pressed or the footrest has reached its maximum extension.

**CLOSE:** Press and hold the CLOSE icon button (Fig. 5D) to lower the recliner's footrest. The movement will stop when the button is no longer pressed or the footrest has returned to its starting position.

**MASSAGE (MSGE):** Press the MSGE icon button (Fig. 5E) to turn on the vibrators. Press again to turn them off. The vibrators will shut down in 30 minutes if not manually turned off.

**LIGHT/LOCK:** Press the LIGHT icon button (Fig. 5E) to turn on the light ring inside the cupholder and LED lights on the floor. Press again to turn lights off. Press and hold the LIGHT icon button (Fig. 5E) for about three seconds to lock the other buttons. Press and hold LIGHT for three seconds to unlock the cupholder.



LIPPERT  
COMPONENTS

# THOMAS PAYNE® CUPHOLDER OPERATION GUIDE

QR-053

## INTERIORS

### Double Tap Lighting Cupholder

The double tap lighting cupholder (Fig. 6) becomes illuminated when the cupholder is tapped twice. Tap the cupholder again to turn off the light.

Pictured is Cupholder Part #729242.

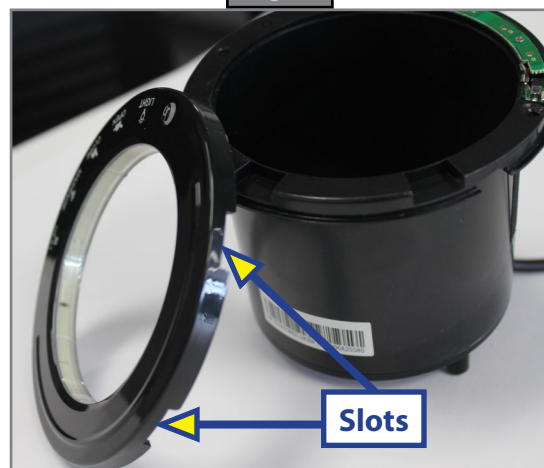
Fig. 6



### Replacing eMOMO Cupholder (Not Q-Cupholders)

1. Insert 1/2" flathead screwdriver or a butter knife into one of the two slots located at 9:30 and 11:30 on the plastic cupholder rings (Fig. 7).
2. Twist the tool to pop off the plastic ring.  
**NOTE:** Make sure the lock button does not fall out of the ring.
3. Using a Phillips screwdriver, remove the screws securing the assembly to the recliner.
4. Pull out the assembly and unplug it from the control box.
5. Plug in new assembly and reuse the screws previously removed to secure the new assembly to the recliner.
6. Reattach plastic ring on top of cupholder.

Fig. 7



### Troubleshooting Table

| What is Happening                                | Why?                                                          | What Should Be Done?                                                                 |
|--------------------------------------------------|---------------------------------------------------------------|--------------------------------------------------------------------------------------|
| No response                                      | Power plug is broken.                                         | Check the connection of the power plug.                                              |
|                                                  | Buttons have been locked.                                     | Press the lock button again.                                                         |
| Suddenly stops or does not work during operation | Auto switch turns off function as it reaches time limitation. | Press and hold the lock button to restart. For Q-Cupholders, press the LIGHT button. |
|                                                  | Connector has poor connection.                                | Check connectors and reconnect them.                                                 |
|                                                  | Interference around cupholders.                               | Check for and remove the source of interference around cupholders.                   |

As a supplier of components to the RV industry, safety, education and customer satisfaction are our primary concerns. Should you have any questions, please do not hesitate to contact us at (574) 537-8900 or by email at [customerservice@lci1.com](mailto:customerservice@lci1.com). Self-help tips, technical documents, product videos and a training class schedule are available at [lci1.com](http://lci1.com) or by downloading the MyLCI app.