

SLIDE-OUTS

Purpose

This document is intended to outline the tolerance measurement procedure for the In-Wall® slide-out. This interactive form may be filled out and retained for records or for customer service purposes. Please download the required photos to the form and, once complete, press the "Submit" button on the last page. If an error occurred, press "Clear Form" to start over.

NOTE: If interactive features of this document will not work on your device, label the jpg images to correspond with the photo box titles — e.g. "Top Right – 3 inches" — and email as attachments with this form.

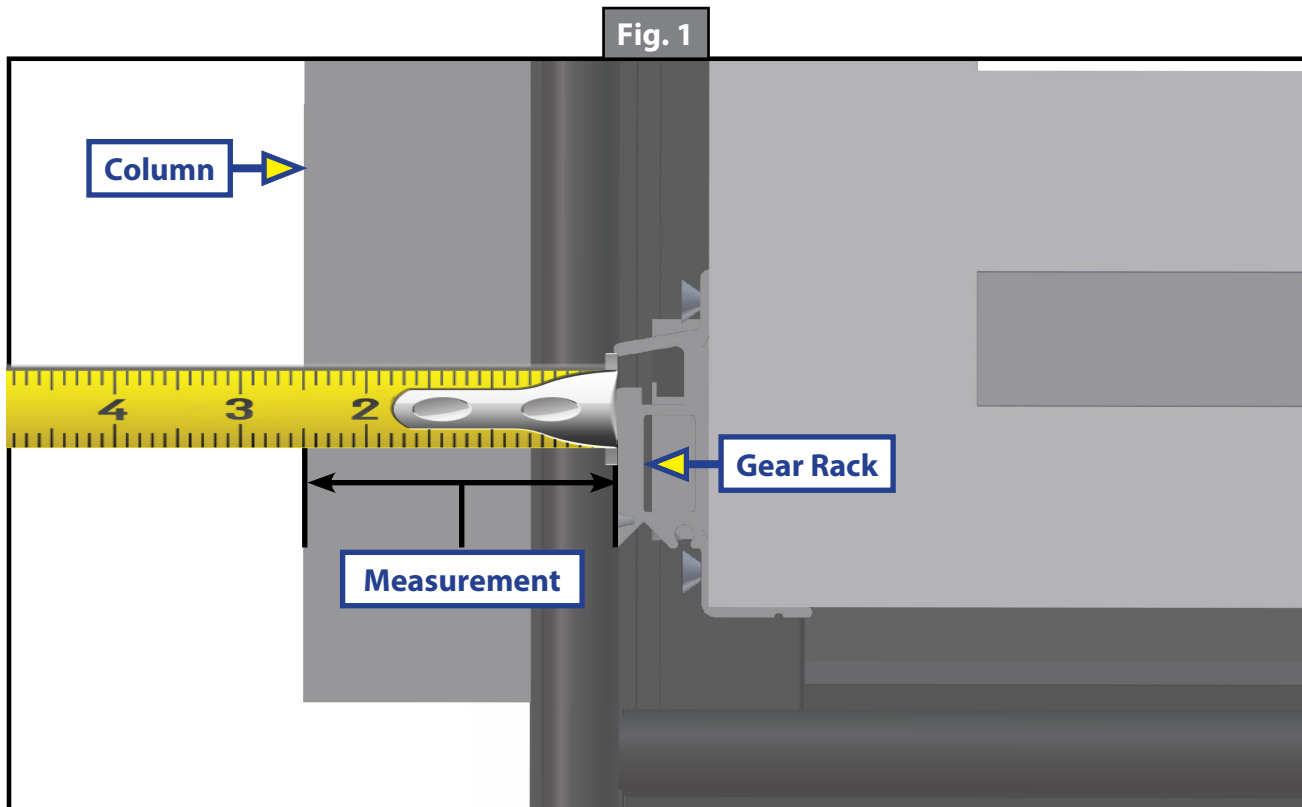
Visual Inspections

Measurements

1. Measure from the outside edge of the column to the face of the gear rack at all four gear racks. The standard measurement should be $2\frac{1}{2}$ " plus or minus $\frac{1}{8}$ ". Take this measurement when the room is fully extended and again when the room is 3" from fully retracted.

NOTE: For units with non-standard installations, contact the OEM for their specific measurements.

2. Measure the gear racks for parallel. There should be less than $\frac{1}{8}$ " difference between the parallel measurements.
3. Check for proper seal engagement (no binding).
4. Check for damage to gear rack.



Allowable Tolerances

The measurement tolerance is $2\frac{1}{2} \pm \frac{1}{8}$ " for slide-out units.

SLIDE-OUTS

Procedure

Take the measurements as previously outlined and as shown in Fig. 1. Press the tape measure or ruler against the gear rack. Make sure the measuring device is neither above nor below the gear rack (Fig. 1).

NOTE: Measurements should be taken from the exterior of the unit (with the exception of the units which, due to an alternate installation, should be measured from the interior of the unit).

1. Extend the slide-out 3 inches from its closed position.
2. Take a measurement at each corner, record each measurement in boxes 1 through 4, and include a picture of each measurement.
3. Fully extend the slide-out.
4. Take a measurement at each corner, record each measurement in boxes 5 through 8, and include a picture of each measurement.

Uploading Photos Using Interactive Forms

The photo boxes on the following pages are interactive and are intentionally blank to allow users to upload their own photos that correspond with the measurements outlined in this document. To use the interactive photo boxes:

1. The document must be downloaded or the "Save as" command used for the interactive features to work properly.
 - A. If the document has been downloaded in an interactive state, a picture symbol (Fig. 2A) will be visible in the center of the photo box. If the picture symbol is not visible, see Note under "Purpose" on Page 1.
2. Click on the picture symbol (Fig. 2A) and a "Select Image" window with a "Browse" button will appear (Fig. 3).
3. Click the "Browse" button (Fig. 3A) and navigate to the location on your computer where the images have been saved.
4. Double click on the appropriate image and the image will appear in the "Sample" window (Fig. 3B). If the image is correct, hit "OK" (Fig. 3C) and the image will appear in the corresponding photo box. If the image is not correct, hit "Cancel" (Fig. 3D) and start over with Step 2.
5. Once all images have been uploaded to the eight interactive photo boxes, proceed to the last page and type any pertinent notes in the interactive "Notes" field and hit the green "Submit" button. To start the entire process over, hit the red "Clear Form" button.

SLIDE-OUTS

Fig. 2

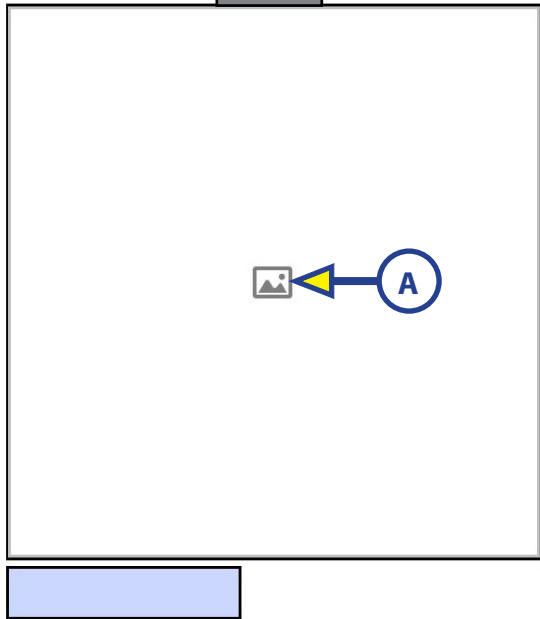
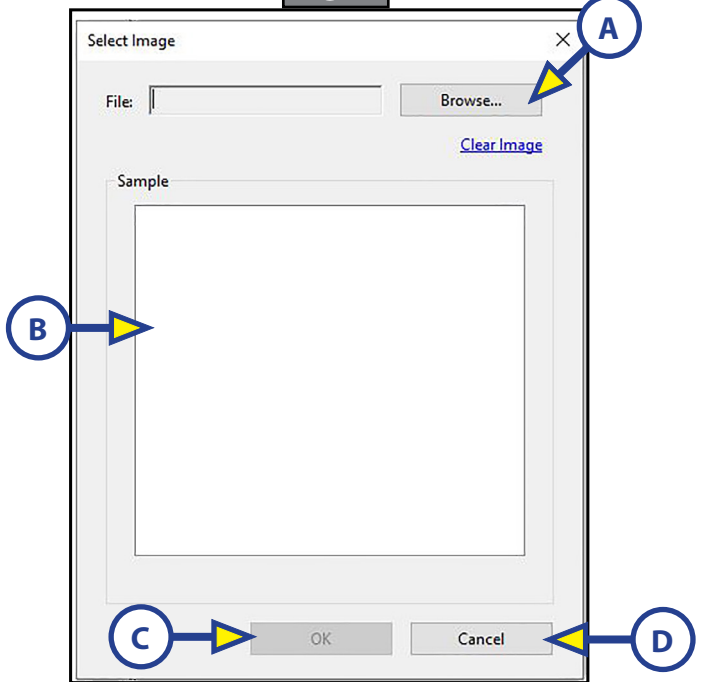


Fig. 3



Box 1: Top Left - 3 inches

Box 2: Top Right - 3 inches

Measurement
(include units)

Measurement
(include units)



IN-WALL® SLIDE-OUT VARIANCE MEASUREMENT FORM

QR-085A

SLIDE-OUTS

Box 3: Bottom Left - 3 inches

Box 4: Bottom Right - 3 inches

Measurement
(include units)

Measurement
(include units)

Box 5: Top Left - Full Extension

Box 6: Top Right - Full Extension

Measurement
(include units)

Measurement
(include units)



IN-WALL® SLIDE-OUT VARIANCE MEASUREMENT FORM

QR-085

SLIDE-OUTS

Box 7: Bottom Left - Full Extension

Box 8: Bottom Right - Full Extension

Measurement
(include units)

Measurement
(include units)

Submit form to Customer Service

Notes / Comments

As a supplier of components to the RV industry, safety, education and customer satisfaction are our primary concerns. Should you have any questions, please do not hesitate to contact us at (574) 537-8900 or by email at customerservice@lci1.com. Self-help tips, technical documents, product videos and a training class schedule are available at lci1.com or by downloading the MyLCI app.