

INSTALLATION MANUAL

FSF24HBL1

Level of Difficulty

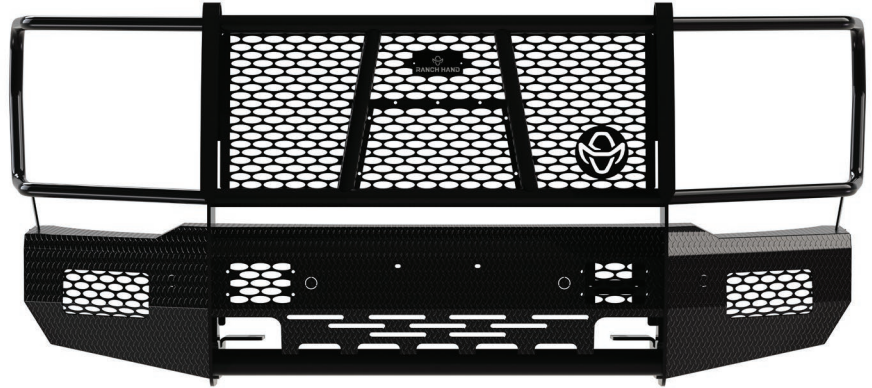
Moderate

Installation difficulty levels are based on time and effort involved and may vary depending on the installer level of expertise, condition of the vehicle and proper tools and equipment.

Parts List

Qty	Description
1	Driver-side top bracket
1	Passenger-side top bracket
1	Driver-side bottom bracket
1	Passenger-side bottom bracket
1	Adaptive cruise plastic
2	Adaptive cruise insert
1	Adaptive cruise bracket
1	Adaptive cruise bracket backer
2	Fog light bracket
1	Grill insert #2
4	Plastic spacer
6	Rubber grommet
10	Rubber washer
1	Sensor pigtail
2	Hex nut tab, 1/2"
4	Hex head bolt, 1/2"-13 x 2", grade 8
4	Hex head bolt, 1/2"-13 x 1-1/2", grade 5
12	Flat washer, 1/2"
8	Lock washer, 1/2"
4	Hex nut, 1/2"-13
8	Black carriage bolt, 1/2"-13 x 1-1/2", grade 5
8	Black hex lock nut, 1/2"-13
8	Black flat washer, 1/2"
6	Hex head bolt, 1/4"-20 x 1", grade 5
6	Hex nut, 1/4"-20
6	Flat washer, 1/4"
6	Black button head bolt, 1/4"-20 x 1-1/2"
19	Black Button head Bolt, 1/4"-20 x 3/4"
25	Black kep nut, 1/4"-20
1	Summit front bumper

Product Photo



NOTICE

Visit www.curtmfg.com for a full-color copy of this instruction manual, as well as helpful videos, guides and much more!

Before you begin installation, read all instructions thoroughly.

Proper tools will improve the quality of installation and reduce the time required.

Periodic inspection of your product should be performed to ensure all hardware and / or components remain secure.

To help prevent damage to the product or vehicle, refer to the specified torque specifications when securing hardware during the installation process.

Product Registration and Warranty

Ranch Hand stands behind our products with industry-leading warranties. To get copies of the product warranties, register your purchase or provide feedback, visit: warranty.curtgroup.com/surveys

Maintenance

Mild automotive detergent may be used to clean the product. Do not use dish detergent, abrasive cleaners, abrasive pads, wire brushes or other similar products that may damage the finish.

Tools Required

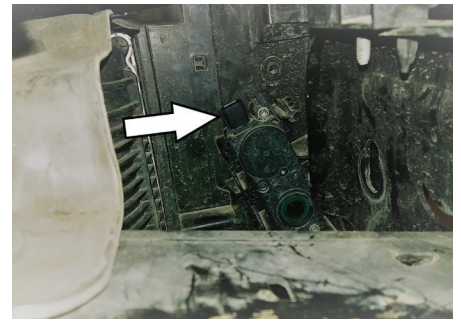
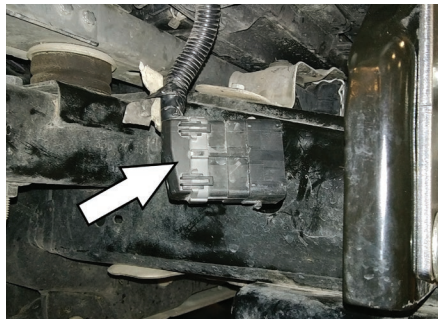
Ratchet	Torque wrench
SAE socket set	SAE wrenches
Metric socket set	Metric wrenches
Ratcheting wrench, 15mm (optional)	Socket extension (optional)
Allen wrench, 5/32"	--

Torque Specifications

M12	59 ft-lbs.
1/2" bolt, grade 5	75 ft-lbs.
1/2" bolt, grade 8	110 ft-lbs.
Use above torque setting unless otherwise noted	

Step 1

Before removing the bumper, locate and disconnect the main harness connector and the connector for the bottom louvers. Both are located on the passenger side.



Step 2

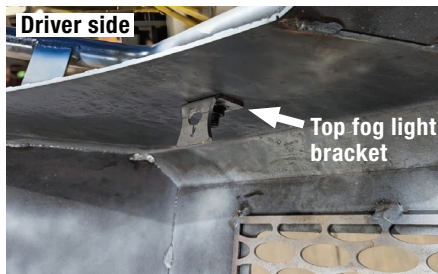
To remove the factory bumper, remove the six (6) 21mm mounting nuts (three on each frame horn). There is one more connector above the bottom louver system on the driver side. Carefully pull the bumper away from the frame then unplug this connector.



Step 3

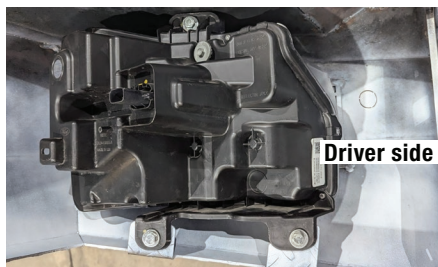
Install the fog lights. It is easier to install them when the front end is off the truck. Loosely secure the top of the "L" bracket to the top plate using a 1/4" button head bolt and kep nut. The formed side of the bracket should hang down towards the back.

Secure the top hole of the fog light to the "L" bracket with a 1/4" x 1" bolt. Rotate the top bracket outwards to reach the top hole of the fog light.



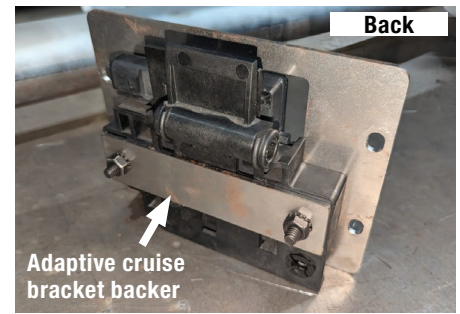
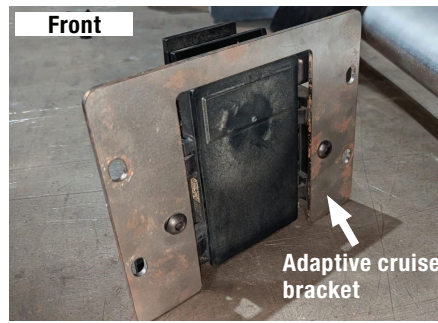
Step 4

Bolt the bottom two holes of the fog light to the formed tabs of the bottom of the skirts with 1/4" x 1" bolts, washers and kep nuts.



Step 5

If adaptive cruise control (ACC) is present, remove the ACC module from the factory bumper. Install the module to the ACC bracket using two 1-1/2" button head bolts and kep nuts. Install the ACC backer plate on the back side of the bracket.



Step 6

Driver side opening: Mount the ACC module/bracket onto the driver side opening use four (4) 1-1/2" button head bolts and rubber washer. Insert the bolts from from the front side through the bolt holes. Slide the black plastic cover, and plastic spacers over the bolts from the back side. Then mount the ACC module/bracket over the bolts. Secure with the bracket in place with kep nuts.



Passenger side opening: Insert four (4) 3/4" button head bolts and rubber washers through the bolt holes. Mount the insert from the back side and secure with kep nuts.

Note: If Adaptive Cruise Control is not present install the insert instead.

Step 7

Remove the front wiring harness from the factory bumper. Install the harness to the frontend. Route the harness through the large square holes of the uprights. If sensors are present, remove the knockouts in the frontend and install the rubber grommets around the openings. Install the sensors into the appropriate holes, and connect the fog light and adaptive cruise control connectors.

Step 8

If tow hooks are present, remove them. Mount the bottom brackets along with the tow hooks to the bottom of the frame. Mount the top brackets to the two outside holes in the frame plate. Use 1/2" hardware provided. The bottom brackets should be about 39-1/2" O.D. apart and will mount to the inside of the uprights. The top brackets should be about 40-3/8" I.D. apart and will mount to the outside of the uprights. (Hand tighten)



Step 9

On vehicles without a camera, install the small insert by using the 1/4" black button head bolts and nuts.

Step 10

Install the license plate (if needed) on the center two holes on the front end.