

# INSTALLATION MANUAL

## GGF24HBL1

### Level of Difficulty

Easy

Installation difficulty levels are based on time and effort involved and may vary depending on the installer level of expertise, condition of the vehicle and proper tools and equipment.

### Parts List

Item	Qty	Description
1	1	Mounting bracket, driver side
2	1	Mounting bracket, passenger side
3	1	Grill Insert 2
4	2	Hex nut tab, 1/2"
5	4	Hex head bolt, 1/2"-13 x 2", grade 8
6	4	Flat washer, 1/2"
7	4	Lock washer, 1/2"
8	4	Black carriage bolt, 1/2"-13 x 1-1/2", grade 5
9	4	Black hex lock nut, 1/2"-13
10	4	Black flat washer, 1/2"
11	7	Black button-head bolt, 1/4"-20 x 3/4"
12	7	Black kep nut, 1/4"-20
13	1	Grille guard

### Tools Required

Ratchet	Torque wrench
SAE socket set	Allen wrench, 5/32"
SAE wrenches	Ratchet wrench, 15mm (optional)
Metric socket set	Extension (optional)
Metric wrenches	Utility knife

### Torque Specifications

<b>Metric</b>	M12 bolt	59 ft-lbs.
<b>SAE</b>	1/2" bolt, grade 5	75 ft-lbs.
	1/2" bolt, grade 8	110 ft-lbs.

Use above torque setting unless otherwise noted

### Product Photo



### NOTICE

Visit [www.ranchhand.com](http://www.ranchhand.com) for a full-color copy of this instruction manual, as well as helpful videos, guides and much more!

Before you begin installation, read all instructions thoroughly.

Proper tools will improve the quality of installation and reduce the time required.

Periodic inspection of your product should be performed to ensure all hardware and / or components remain secure.

To help prevent damage to the product or vehicle, refer to the specified torque specifications when securing hardware during the installation process.

### Maintenance

Mild automotive detergent may be used to clean the product. Do not use dish detergent, abrasive cleaners, abrasive pads, wire brushes or other similar products that may damage the finish.

### Product Registration and Warranty

Ranch Hand stands behind our products with industry-leading warranties. To get copies of the product warranties, register your purchase or provide feedback, visit: [warranty.curtgroup.com/surveys](http://warranty.curtgroup.com/surveys)

### Step 1A (4X4 Models Only)

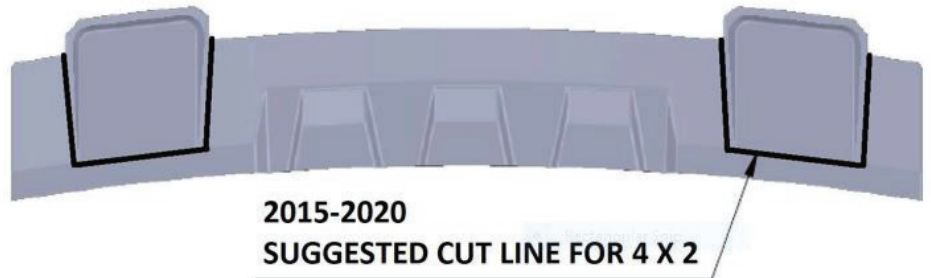
Remove the front tow hook bolt. For ease of removal, use a 15mm ratchet wrench. The rear bolt just needs to be loosened enough to allow for tow hook removal.

Remove the tow hook and the boot around it.



### Step 1B (2015-2020 4X2 Models Only)

You will have to cut openings in the bottom of the bumper to install the bottom brackets. Slide the hex nut tab, provided, into the frame over the frame holes.



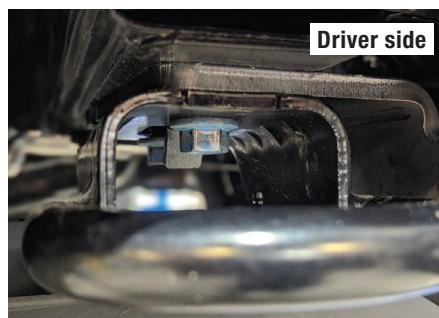
### Step 1C (2021-current 4X2 Models Only)

Remove the cover where the tow hook openings are located. Slide the provided hex nut tab into the frame over the frame holes.



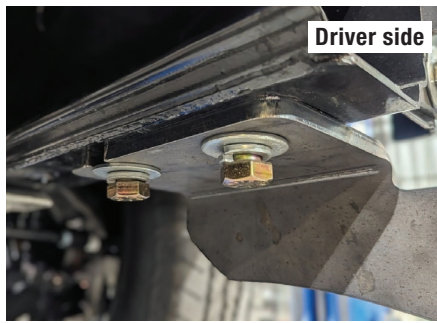
### Step 2A (4X4 Models Only)

There is a driver and passenger-side bottom bracket. Mount the bottom brackets to the bottom of the frame and then the tow hooks. Use the factory bolts to install. Leave the bolts loose enough so that the brackets can be moved to line up the grille guard.



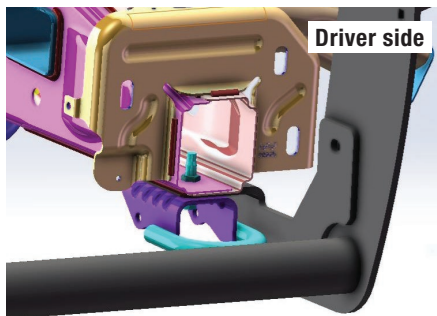
### Step 2B (4X2 Models Only)

There is a driver and passenger-side bottom bracket. Mount the bottom brackets to the bottom of the frame. Use 1/2" x 2" hex bolts, lock washer, and washer to install. Leave the bolts loose enough so that they can be moved to line up the grille guard.



### Step 3

Mount the grille guard to the outside of the brackets using 1/2" black carriage bolts, washers, and nuts. Line up the grille guard from side to side then tighten the bottom bolts to the frame.



### Step 4

Line up the grille guard to the headlights. The holes are slotted so the grille guard can be raised or lowered. It also can be leaned forwards or back. Once you have positioned the grille guard, tighten the carriage bolts according to the torque specifications listed on page one.

### Step 5

On vehicles without a camera, install the small insert by using the 1/4" black button head bolts and nuts.