



1-877-287-8634

INSTALLATION INSTRUCTIONS

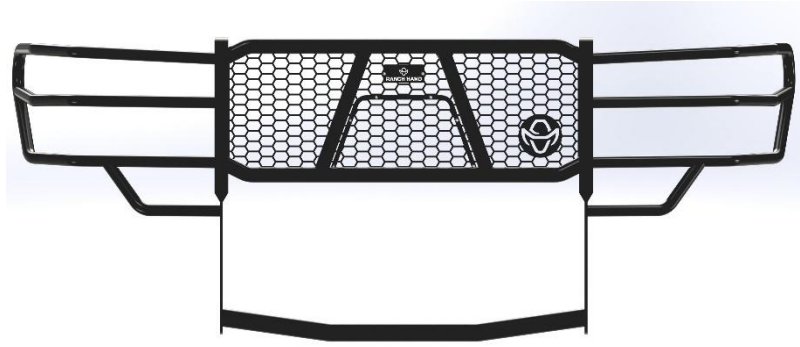
IMPORTANT NOTICE: Be sure to inspect and test fit product before having it coated or painted. Ranch Hand will not be responsible for the cost of the coating if any problems with fit or finish are not noted and addressed beforehand.

2022-up TOYOTA TUNDRA GRILL GUARD PART # GGT22HBL1

NOTE: WILL NOT FIT SEQUOIA

TOOLS REQUIRED

- Ratchet and extension
- SAE sockets and wrenches
- Metric sockets and wrenches
- 5/32" Allen wrench
- Flat and Phillips screwdriver
- Tape measure
- Pry tool
- Utility knife



1. You will need to remove the bumper and grille assembly. It will come off in one piece.
2. Start by removing inner fender screws. There will be (5) in front of the tire and (2) above.



3. Loosen the fender flare by squeezing the back part of the plastic clips and pulling the fender flare away from the truck.



----- **WARNING** -----

Special care should be exercised in the handling, storage and installation of Ranch Hand equipment. The actual weight of each piece of equipment will vary depending on style and model. The weight of the equipment is sufficient in volume to warrant special care, assistance and in some instances, the use of mechanical equipment during the transfer and installation of the equipment. Do not assume a position directly under the equipment during installation. Be sure the equipment has been connected and stabilized during installation to prevent falling or shifting of positions. Periodically check tightness of bolts to make sure they are tight, and unlikely to fail.
Rev. 2025



1-877-287-8634

INSTALLATION INSTRUCTIONS

IMPORTANT NOTICE: Be sure to inspect and test fit product before having it coated or painted. Ranch Hand will not be responsible for the cost of the coating if any problems with fit or finish are not noted and addressed beforehand.

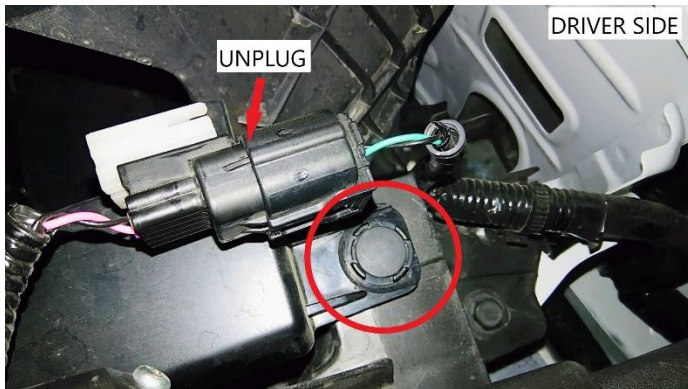
4. Remove the (2) lower bolts that hold the inner fender to the bottom of the bumper.



5. Open the hood and remove the (4) 10mm bolts that hold the grille to the cross member.



6. Remove the (2) plastic clips, one on each side of the grille. Also, unplug any connectors located next to the clips.



WARNING

Special care should be exercised in the handling, storage and installation of Ranch Hand equipment. The actual weight of each piece of equipment will vary depending on style and model. The weight of the equipment is sufficient in volume to warrant special care, assistance and in some instances, the use of mechanical equipment during the transfer and installation of the equipment. Do not assume a position directly under the equipment during installation. Be sure the equipment has been connected and stabilized during installation to prevent falling or shifting of positions. Periodically check tightness of bolts to make sure they are tight, and unlikely to fail.
Rev. 2025

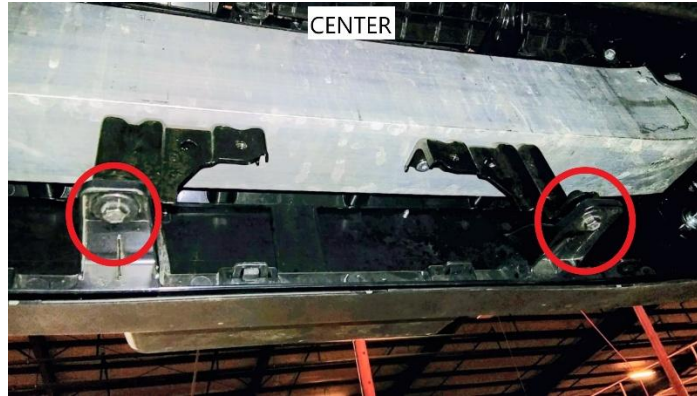


1-877-287-8634

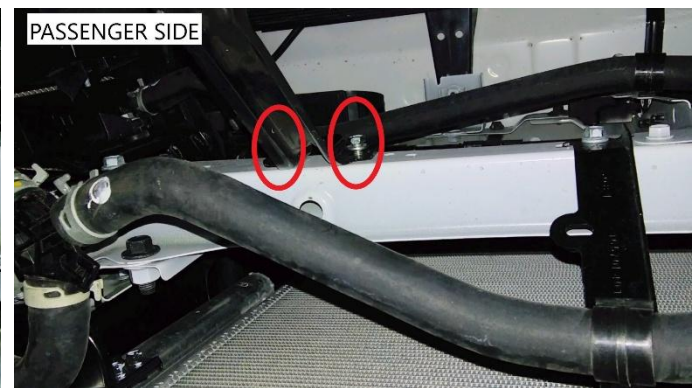
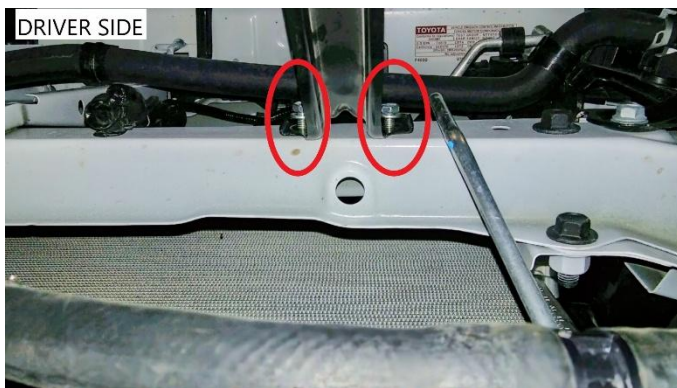
INSTALLATION INSTRUCTIONS

IMPORTANT NOTICE: Be sure to inspect and test fit product before having it coated or painted. Ranch Hand will not be responsible for the cost of the coating if any problems with fit or finish are not noted and addressed beforehand.

- From the bottom of the truck, remove the (4) 10mm bolts that hold the air dam to the bumper. Two in the center and one on each side.



- There will be (2) lower brackets that attach the front clip to the lower cross member. Remove the (4) 10mm bolts.



WARNING

Special care should be exercised in the handling, storage and installation of Ranch Hand equipment. The actual weight of each piece of equipment will vary depending on style and model. The weight of the equipment is sufficient in volume to warrant special care, assistance and in some instances, the use of mechanical equipment during the transfer and installation of the equipment. Do not assume a position directly under the equipment during installation. Be sure the equipment has been connected and stabilized during installation to prevent falling or shifting of positions. Periodically check tightness of bolts to make sure they are tight, and unlikely to fail.
Rev. 2025



1-877-287-8634

INSTALLATION INSTRUCTIONS

IMPORTANT NOTICE: Be sure to inspect and test fit product before having it coated or painted. Ranch Hand will not be responsible for the cost of the coating if any problems with fit or finish are not noted and addressed beforehand.

9. Start removing the front clip (grille/bumper assembly) by pulling from the fenders. You may have to put pressure on the (3) tab locations shown in the photo.



10. There will be one hook that is behind the area shown in the photo that you will need to lift a little then pull away from the truck.



11. With help, remove the front clip and lay it on a table.



WARNING

Special care should be exercised in the handling, storage and installation of Ranch Hand equipment. The actual weight of each piece of equipment will vary depending on style and model. The weight of the equipment is sufficient in volume to warrant special care, assistance and in some instances, the use of mechanical equipment during the transfer and installation of the equipment. Do not assume a position directly under the equipment during installation. Be sure the equipment has been connected and stabilized during installation to prevent falling or shifting of positions.

Periodically check tightness of bolts to make sure they are tight, and unlikely to fail.

Rev. 2025

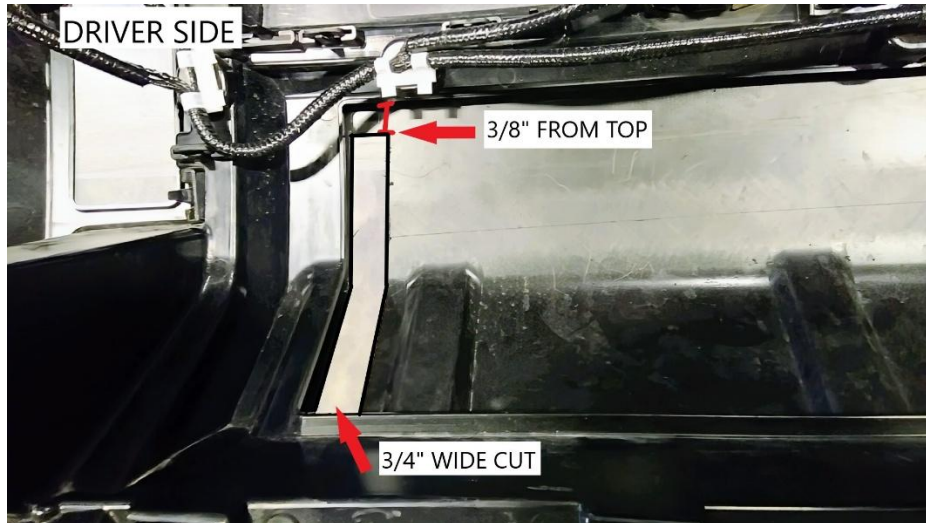


1-877-287-8634

INSTALLATION INSTRUCTIONS

IMPORTANT NOTICE: Be sure to inspect and test fit product before having it coated or painted. Ranch Hand will not be responsible for the cost of the coating if any problems with fit or finish are not noted and addressed beforehand.

12. Need to make a cut out for the mounting brackets to go through. Start by marking a line $\frac{3}{8}$ " from the top and $\frac{3}{4}$ " wide. Cut area out with a utility knife. (Driver side shown)



13. There will be a driver and passenger side top and bottom side brackets. Remove the top bolts of the crash beam. Install the top brackets then reinstall the bolts. Set the outside measurements to $39 \frac{3}{8}$ ". Measure in the front and towards the back to make sure the brackets are running parallel to each other. Once set, remove the bottom bolts from the crash bar. Install the bottom bracket. Use $\frac{7}{16}$ " hardware to secure the top bracket to the bottom bracket.



14. Reinstall the front clip (grille/bumper combo). Also, plug in any connectors that were unplugged in Step 6.

WARNING

Special care should be exercised in the handling, storage and installation of Ranch Hand equipment. The actual weight of each piece of equipment will vary depending on style and model. The weight of the equipment is sufficient in volume to warrant special care, assistance and in some instances, the use of mechanical equipment during the transfer and installation of the equipment. Do not assume a position directly under the equipment during installation. Be sure the equipment has been connected and stabilized during installation to prevent falling or shifting of positions. Periodically check tightness of bolts to make sure they are tight, and unlikely to fail.

Rev. 2025



1-877-287-8634

INSTALLATION INSTRUCTIONS

IMPORTANT NOTICE: Be sure to inspect and test fit product before having it coated or painted. Ranch Hand will not be responsible for the cost of the coating if any problems with fit or finish are not noted and addressed beforehand.

15. Part of the bracket and one hole will be exposed through the bumper.



16. If your truck is not equipped with a front camera, install the camera insert by using (6) button head bolts and kep nuts. Mount it to the back side of the insert.

17. Mount the grill guard to the outside of the brackets using ½" carriage bolts. You may have to squeeze the brackets inwards while sliding the grill guard around them.

18. Level the grill guard then tighten all nuts and bolts.



WARNING

Special care should be exercised in the handling, storage and installation of Ranch Hand equipment.

The actual weight of each piece of equipment will vary depending on style and model. The weight of the equipment is sufficient in volume to warrant special care, assistance and in some instances, the use of mechanical equipment during the transfer and installation of the equipment.

Do not assume a position directly under the equipment during installation. Be sure the equipment has been connected and stabilized during installation to prevent falling or shifting of positions.

Periodically check tightness of bolts to make sure they are tight, and unlikely to fail.

Rev. 2025