

INSTALLATION MANUAL

Level of Difficulty

Easy

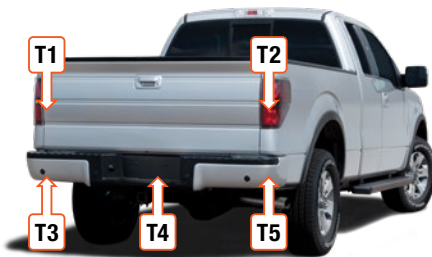
Installation difficulty levels are based on time and effort involved and may vary depending on the installer level of expertise, condition of the vehicle and proper tools and equipment.

Wiring Location(s)

T4

Wiring Location Guide* for Trucks (T)

T1	Behind driver side taillight housing
T2	Behind passenger side taillight housing
T3	Behind driver side rear bumper
T4	Behind center of rear bumper fascia
T5	Behind passenger side rear bumper



* Representative vehicle shown

Tools Required

Wire cutters --

⚠ WARNING

Do not exceed product rating or tow vehicle lamp load rating, whichever is lower.

Product Photo



NOTICE

Before you begin installation, read all instructions thoroughly.

Proper tools will improve the quality of installation and reduce the time required.

All steps must be followed to ensure the product will function properly. Once installed, test for proper function by using a test light or connecting a properly wired trailer.

Maintenance

Periodic inspection of all wires and connections should be performed to ensure there is no visible damage or loose connections.

Step 1

Locate the USCAR plug (typically directly behind the trailer harness 7-way).



Step 2

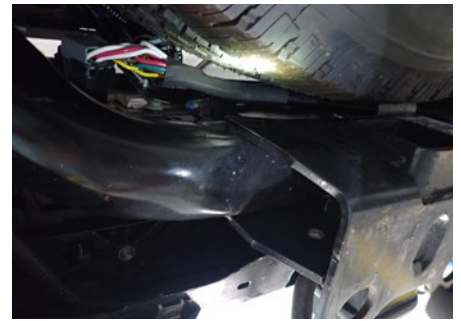
Pull the lock loose on the connector. (Note: the lock may completely detach). Some USCAR housings do not have a connector lock.

If there is no lock, press the housing connector release and disconnect. (Note: if the housing is full of dust and debris, you may need to push the connector together, then press the connector release and pull the housings apart).



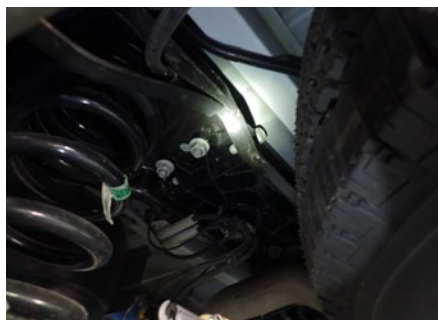
Step 3

Install the T-end inbetween the factory USCAR connectors. Make sure the connector is fully connected and reinstall, if equipped, the lock on the factory USCAR connector.



Step 4

Route the wiring to the driver side and along the frame to where the cab and the box meet. Use the cable ties to secure the harness in place and away from heat and moving parts.



Step 5

Once the headache rack is installed and the light harness is dropped down between the cab and the box, attach the light harness.

