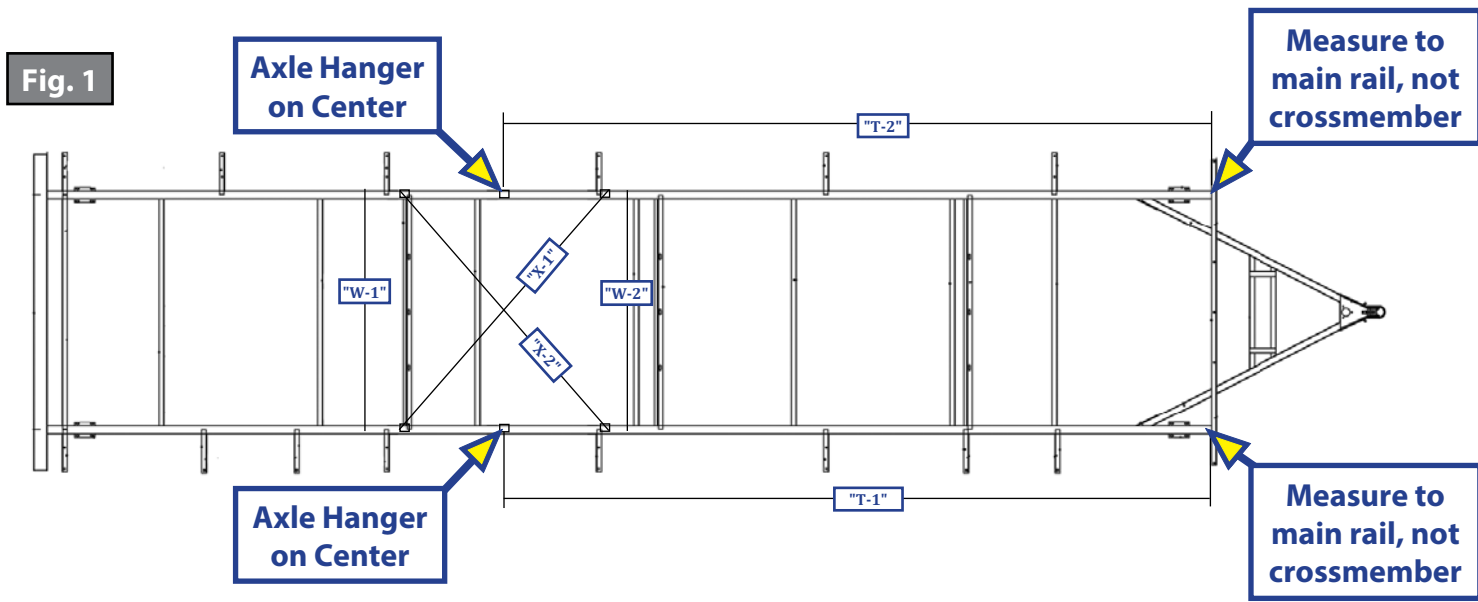


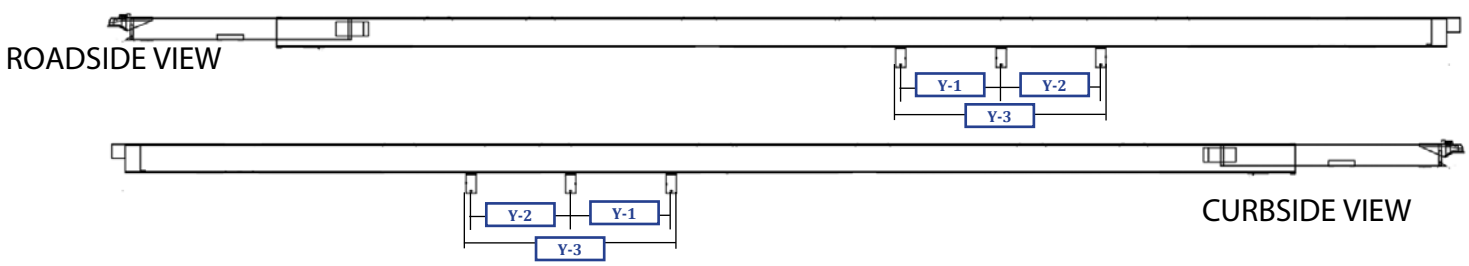


## FRAMES AND CHASSIS



	Measurement
T-1	
T-2	
W-1	
W-2	
X-1	
X-2	

**Fig. 2**



Curbside	Measurement
Y-1	
Y-2	
Y-3	

Roadside	Measurement
Y-1	
Y-2	
Y-3	



LIPPERT  
COMPONENTS

# AXLE HANGER MEASUREMENT PROCEDURE - DOUBLE AXLE

TI-058

## FRAMES AND CHASSIS

Fig. 3

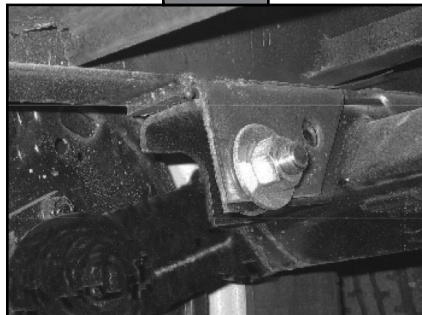
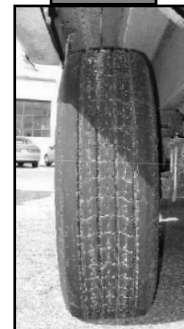


Fig. 4



Fig. 5



1. Unit must be pulled into work space straight and evenly.
2. When measuring axle hanger, measure where hanger meets I-beam (Fig. 3 and 4).  
**NOTE:** Be sure to measure as high on the hanger as possible if other components interfere with measurement point on the hanger.
3. On measurements W-1 and W-2, (Fig. 1) be sure to measure top of hanger, in order to determine the spring center.
4. When measuring X-1 and X-2, (Fig. 1) be sure to measure from the top of the hanger on both ends. If there is a discrepancy, measure bolt-to-bolt.

**NOTE:** It may be necessary to have another individual assist by holding the other end of the tape measure.

5. Measure T-1 and T-2 (Fig. 1) from center of axle hanger to intersection of main rail and front crossmember.
6. Measure Y-1 and Y-2 (Fig. 2) on center of bolt.
7. Measure Y-3 (Fig. 2) outside of front hanger to outside of rear hanger.

**NOTE:** Please accompany this document with clear pictures of all points of issue. Be sure tire wear pictures are shot straight on (Fig. 5).

As a supplier of components to the RV industry, safety, education and customer satisfaction are our primary concerns. Should you have any questions, please do not hesitate to contact us at (574) 537-8900 or by email at [customerservice@lci1.com](mailto:customerservice@lci1.com). Self-help tips, technical documents, product videos and a training class schedule are available at [lci1.com](http://lci1.com) or by downloading the MyLCI app.