

## DOORS

### Purpose

This document outlines the procedure for replacing the lower corner keys and upper pivot keys in a Patio Wall Armor slide panel.

### Safety

Read and understand all instructions before installing or operating this product. Adhere to all safety labels.

#### ⚠ CAUTION

The "CAUTION" symbol above is a sign that a procedure has a safety risk involved and may cause personal injury, product and/or property damage if not performed safely and within the parameters set forth in this document.

#### ⚠ CAUTION

Use appropriate personal protective equipment (PPE) for the procedure being performed.

#### ⚠ CAUTION

Moving parts can pinch, crush or cut. Keep clear and use caution.

### Resources Required

- 5-in-1 Painters tool
- Rubber mallet

### Procedure

#### Lower Slide Panel Corner Key Removal

1. Place the slide panel in closed position.
2. To remove the slide panel, push in on both bottom slide bolts while pulling the slide panel out towards you. Slide the slide panel down and out of aluminum channel and place on a clean, flat work area.
3. Using a 5-in-1 painters tool (Fig. 1A), place the tool's bottom edge on the top corner edge of the lower sash rail (Fig. 1B). Using a rubber mallet (Fig. 2A), firmly tap the top of the 5-in-1 tool (Fig. 2B) until the lower sash rail releases (Fig. 3A). Do the same for the opposite side of the lower sash rail.

Fig. 1

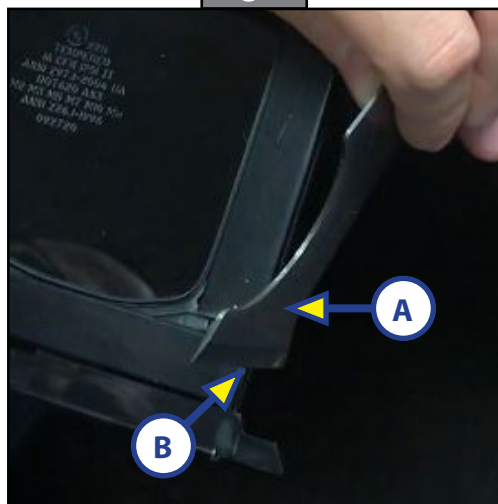


Fig. 2

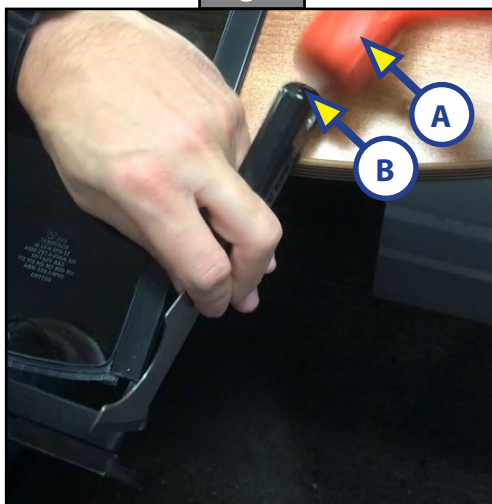


Fig. 3



## DOORS

4. Remove the lower sash rail from the glass slide panel.
5. Using the 5-in-1 painters tool (Fig. 4A), remove the corner key (Fig. 4B) from the lower sash rail (Fig. 4C) by pressing a corner of the 5-in-1 painters tool down into the corner key pin (Fig. 5A). This will release the corner key from the sash rail.
6. Once the corner key is removed, the slide bolt (Fig. 6A) and spring (Fig. 6B) will fall out when tipping the lower sash rail down.
7. If applicable, repeat steps 5 and 6 for the opposite side.

Fig. 4

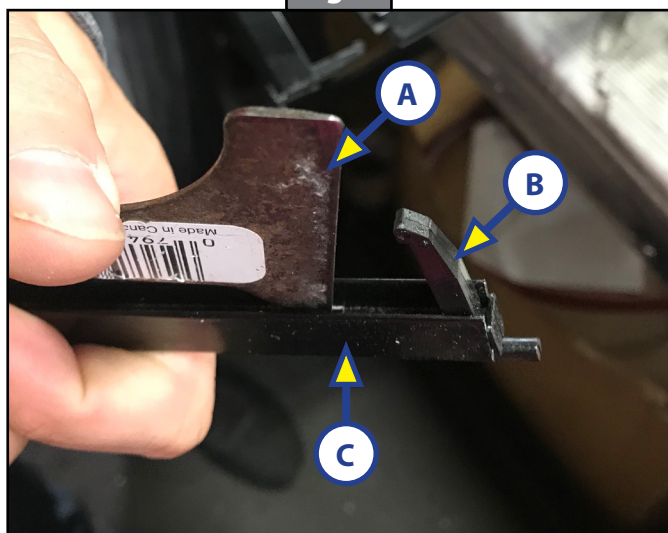


Fig. 5

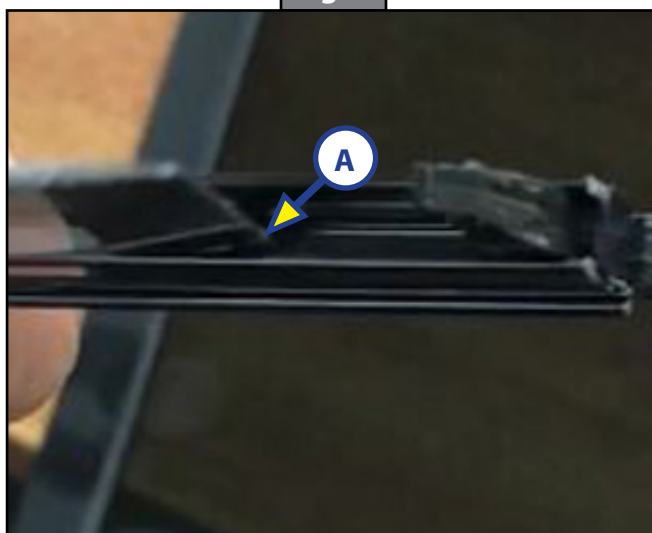
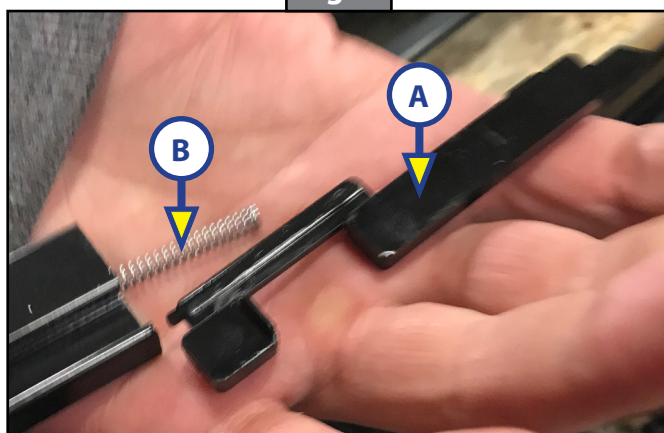


Fig. 6



### Lower Slide Panel Corner Key Installation

1. Insert the spring (Fig. 6B) into the right side of the lower sash rail.
2. Insert the slide bolt (Fig. 6A) into the right side of the lower sash rail. Be sure to insert the slide bolt (Fig. 6A) in the same orientation as it was removed from the lower sash rail.
3. Insert the corner key arm end into the sash rail. Make sure it is fully seated against the end of the sash rail.
4. If applicable, repeat steps 1-3 for the opposite left side, noting that the slide bolt will be in the mirrored position from the right side.

## DOORS

5. Make sure the rubber trim (Fig. 7A) is seated firmly along the glass bottom.
6. Place the lower sash rail with the new corner keys (Fig. 8A) into the side sash rails (Fig. 8B) and along the bottom of the glass (Fig. 8C) as far as it will go in.
7. Using a rubber mallet (Fig. 9A), gently tap the corners and along the bottom of the lower sash rail into the side sash rails so that the lower sash rail is seated firmly against the glass and the ends of the side sash rails.
8. If installing the upper pivot keys, go to the next section or if installation is complete, insert the slide panel back into the aluminum frame. Insert the top of the slide panel into the frame, pushing in both bottom slide bolts while pushing the bottom of the slide panel in towards the frame.

Fig. 7

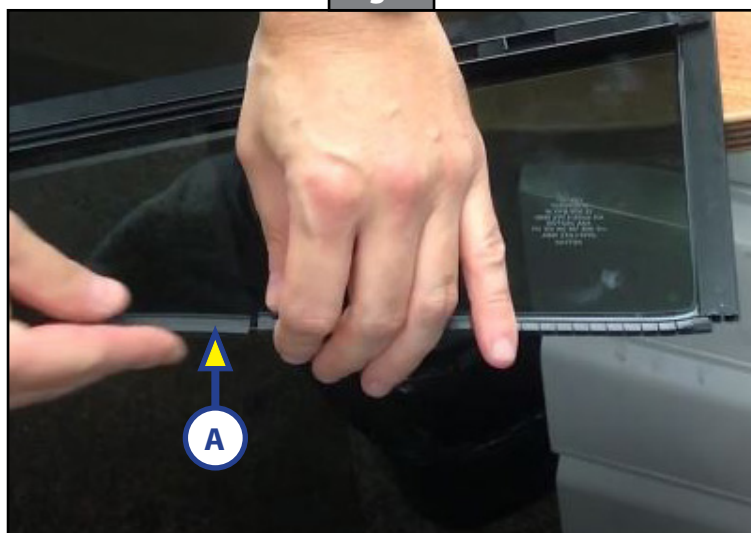


Fig. 8

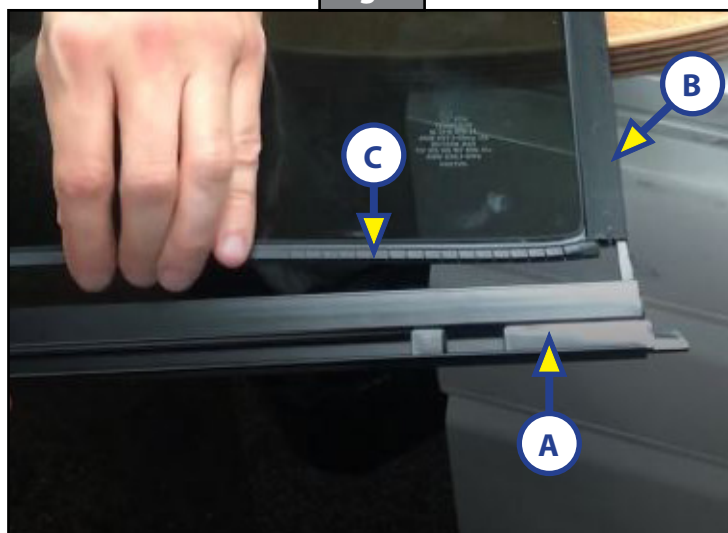


Fig. 9





## DOORS

### Upper Slide Panel Pivot Key Removal

1. If the slide panel is already removed skip to step 3. If the slide panel has not been removed, place the slide panel in closed position.
2. To remove the slide panel, push in on both bottom slide bolts while pulling the slide panel out towards you. Slide the slide panel down and out of the aluminum channel and place on a clean, flat work area.
3. With the top edge of the slide panel facing closest towards you, using a 5-in-1 painters tool (Fig. 10A), place the tool's bottom edge on the bottom corner edge (top edge if the slide panels top is closest to you) of the upper slide panel sash rail (Fig. 10B). Using a rubber mallet (Fig. 1C), firmly tap on the top of the 5-in-1 tool until the lower slide panel sash releases (Fig. 11A). Do the same for the opposite side of the upper sash rail.

Fig. 10



Fig. 11



4. Remove the top sash rail from the glass slide panel.
5. Using the 5-in-1 painter's tool (Fig. 12A), remove the pivot key (Fig. 12B) from the sash rail (Fig. 12C) by pressing in the square area (Fig. 12D, 13A) inside the sash rail with the 5-in-1 painter's tool. This will push the pivot key from the sash rail. Completely remove the pivot key from the top sash rail.
6. If applicable, Repeat step 5 for the opposite side.

Fig. 12

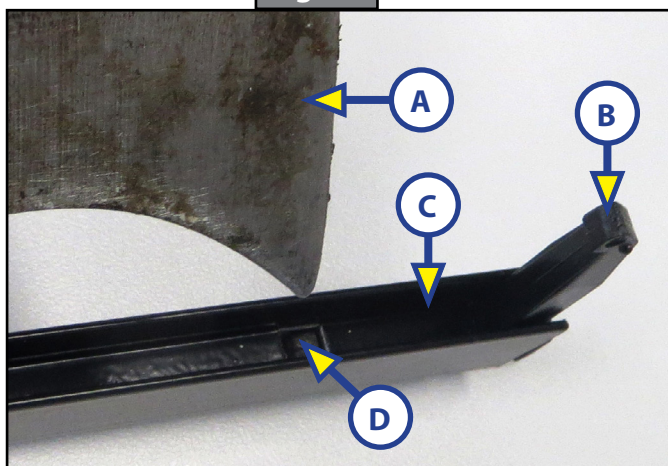
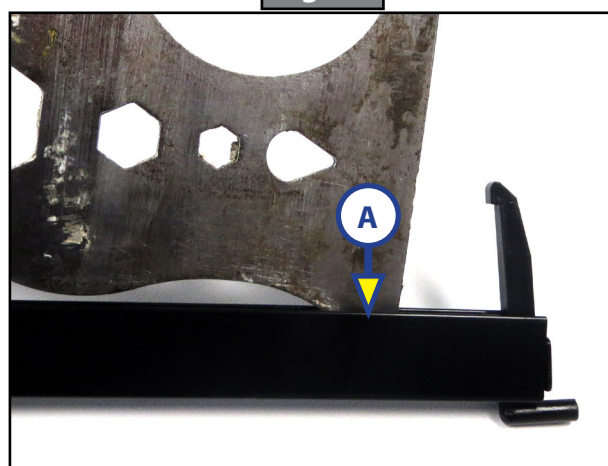


Fig. 13



## DOORS

### Upper Slide Panel Pivot Key Installation

1. With the sash rail facing upside down, insert the right pivot key short arm end (Fig. 14A) into the upper sash rail. Make sure it is fully seated against the end of the upper sash rail (Fig. 15A).
2. Repeat step 1 for the opposite left side, except the pivot key (Fig. 14A) will be in the mirrored position from the right side.

Fig. 14

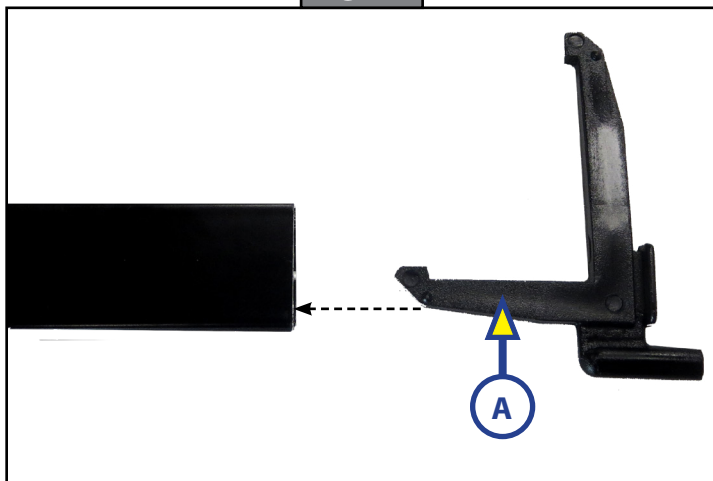
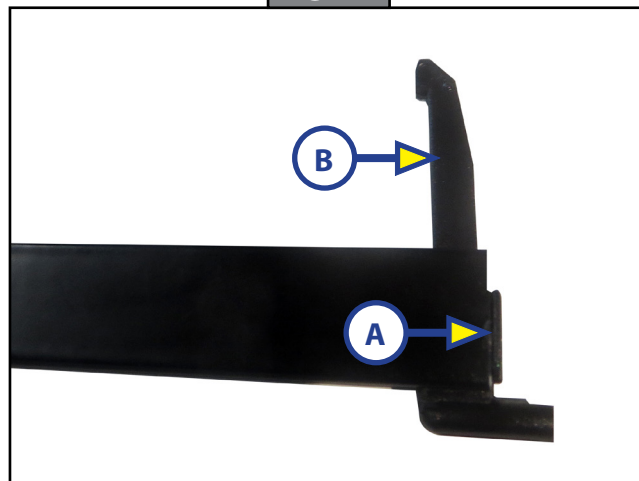


Fig. 15



3. Make sure the rubber trim (Fig. 7A) is seated firmly along the top of the glass.
4. Place the upper sash rail with the new pivot key long arm end (Fig. 15B) into the side sash rails and along the top of the glass as far as it will go in.
5. Using a rubber mallet, gently tap the corners and along the top of the upper sash rail into the side sash rails so that the upper sash rail is seated firmly against the glass and the ends of the side sash rails.
6. Insert the slide panel back into the aluminum frame. Insert the top of the slide panel into the frame, pushing in both bottom slide bolts while pushing the bottom of the slide panel in towards the frame.

As a supplier of components to the RV industry, safety, education and customer satisfaction are our primary concerns. Should you have any questions, please do not hesitate to contact us at (574) 537-8900 or by email at [customerservice@lci1.com](mailto:customerservice@lci1.com). Self-help tips, technical documents, product videos and a training class schedule are available at [lci1.com](http://lci1.com) or by downloading the MyLCI app.