

DOORS

Purpose

This document outlines how replace the entry door core.

Tools Required

- Two people
- Cordless or electric drill or screwdriver
- Appropriate size drive bit
- 1/8" drill bit

Safety

Before starting any work read these instructions.

⚠ CAUTION

The "CAUTION" symbol above is a sign that a safety risk is involved and may cause personal injury and/or product or property damage if not safely adhered to and within the parameters set forth in this document

⚠ CAUTION

Moving parts can pinch, crush, or cut. Keep clear at all times.

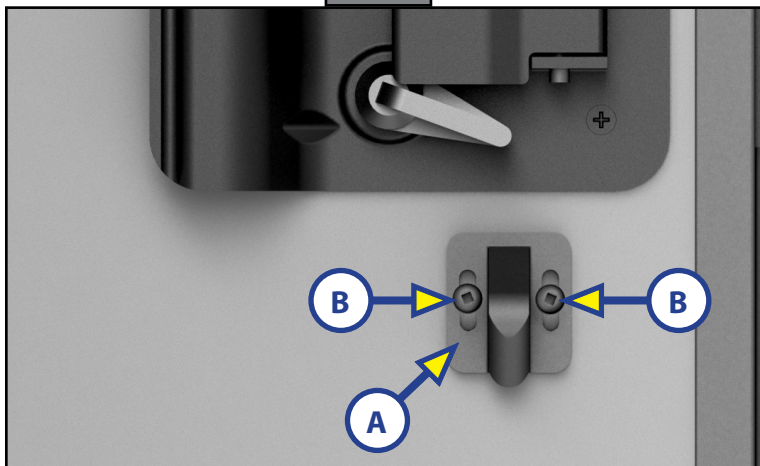
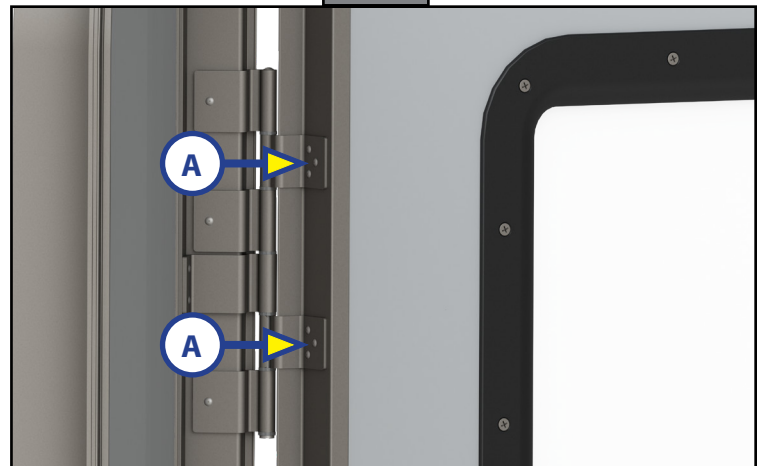
Procedure

1. Keep the screen door closed and open the entry door. Have one person hold the entry door open and in place, ready to hold the weight of the door.

NOTE: Keep all removed screws for re-installation.

2. Remove the screen door catch (Fig. 1A) from the inside of the entry door to install onto the new entry door. Remove the two screws (Fig. 1B) holding the catch to the door and set the catch and screws aside.
3. Starting at the top hinge side of the entry door, remove all screws (Fig. 2A) holding the entry door to the hinges, while another person holds the door, preventing the door from falling as the screws are removed.

NOTE: When installing the entry door, keep the bend of the hinge tight to the corner frame of the door, in the open position.

Fig. 1**Fig. 2**

DOORS

4. Align the bottom of the new entry door (Fig. 3A) with the bottom of the frame (Fig. 3B). Have another person hold the door exactly at that location to ensure that the door stays flush with the frame.
5. Starting at the bottom hinge, re-install a few previously removed screws, then re-install the screws at the top and work back down to the bottom until the door is fully attached to all the hinges.
6. Open and close the door to make sure that the door is aligned and closes properly.
7. Re-install the catch:
 - A. Keep the entry door in the open position and swing the screen door against the entry door.
 - B. Dry fit the catch (Fig. 4A) on the entry door, aligning the bottom of the catch just on top of the latch handle of the screen door (Fig. 4B), approximately in the middle of the indented section on the latch handle (Fig. 4C).
 - C. Slide the catch slightly down (Fig. 5A) putting light pressure on the latch handle until the latch handle "plunger" (Fig. 5B) is flush with the edge of the door frame (Fig. 5).
 - D. Mark the center of the two holes in the catch (Fig. 6A).
 - E. Drill 1/8" pilot holes at the marks in the middle of the screen door catch screw holes.
 - F. Install the previously-removed screws (Fig. 6B) into the pilot holes to secure the screen door catch in place.

Fig. 3

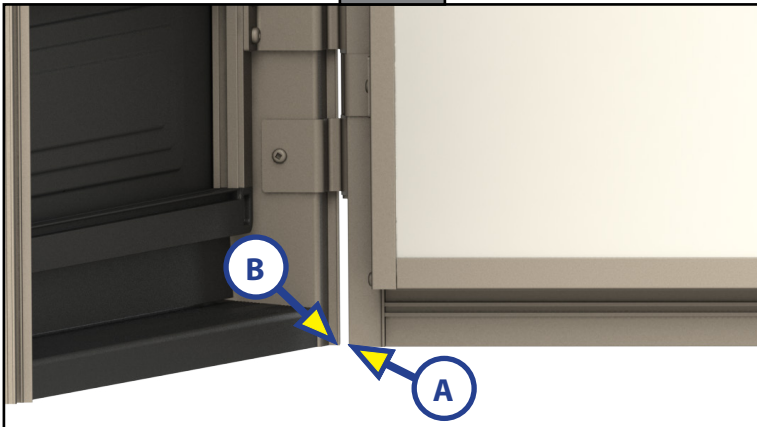


Fig. 4

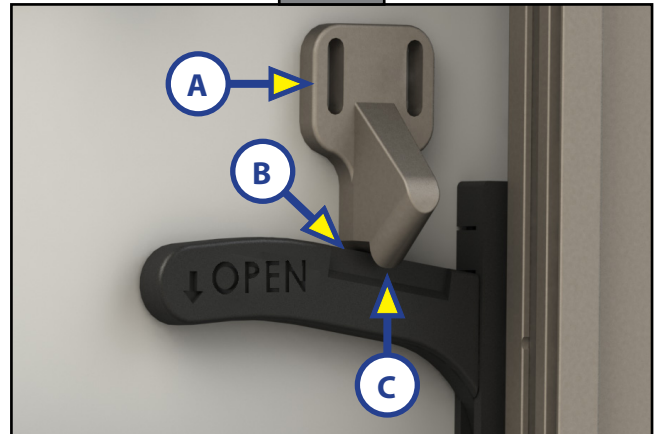


Fig. 5

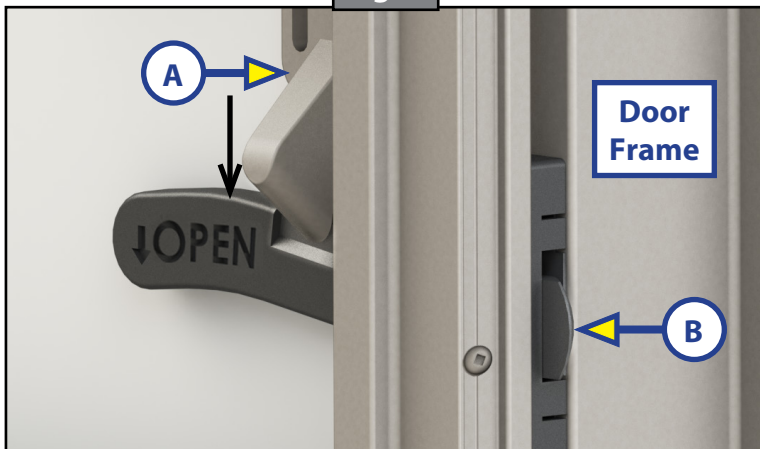
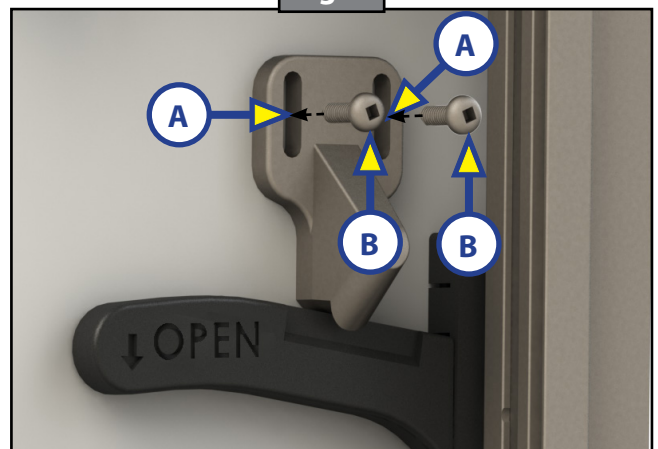


Fig. 6



As a supplier of components to the RV industry, safety, education and customer satisfaction are our primary concerns. Should you have any questions, please do not hesitate to contact us at 432-LIPPERT (432-547-7378) or by email at customerservice@lci1.com. Self-help tips, technical documents, product videos and a training class schedule are available at lippert.com or by downloading the LippertNOW app.