

DOORS

Keypad Programming Instructions

1. While holding the "0" button, press and release the "lock" button (Fig. 1). You will hear a long confirmation beep – entering programming mode.
2. Type in the existing code, in this case, the default code, "1234", then press lock (Fig. 2).
3. Now type in your new code (up to 8 digits), press lock.
4. Again type in your new code and press "lock". (A long confirmation beep confirms and completes programming.)
 - A. The keypad comes from the factory with the default code of "1234".
 - B. Remember, we removed the "backup" reset code/button. You must have the current code to change to a new code. There is no reset button or override code.

Fig. 1



Fig. 2



Fig. 3

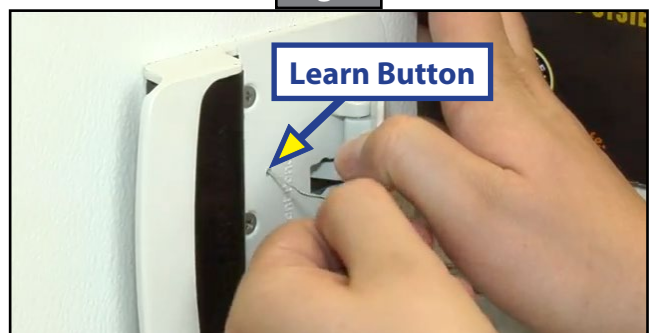


Fig. 4



RVLock Handle Programming Instructions

1. Power up the RVLock handle.
2. Using a paperclip, lightly press the learn button located through the pin hole on the rear of the handle next to battery cover (Fig. 3). You will hear a short confirmation beep.
3. Press the lock button on the Key Fob (Fig. 4). Repeat this process until long set of beeps confirms and completes programming, usually 2 times.

As a supplier of components to the RV industry, safety, education and customer satisfaction are our primary concerns. Should you have any questions, please do not hesitate to contact us at (574) 537-8900 or by email at customerservice@lci1.com. Self-help tips, technical documents, product videos and a training class schedule are available at lci1.com or by downloading the MyLCI app.