

FURNITURE

Purpose

This document provides the steps to replace the pushback recliner chair's seat back.

⚠ CAUTION

Moving parts can pinch, crush or cut. Keep clear and use caution.

Resources Required

- Cordless or Electric Drill or Screw Gun
- Appropriate Drive Bit
- Utility Knife
- Staple Gun
- (3) #8 - 10 x 3 Screws

Instructions

Seat Back Removal

1. Place the pushback chair on its front side with the back of the chair facing up (Fig. 1).
2. Cut the vinyl along the bottom of the chair (Fig. 2) and pull the vinyl portion back.
3. Cut the vinyl along both sides of the inner chair back far enough to expose the wood notches on either side (Fig. 3A and Fig. 3B).

Fig. 1



Fig. 2



Fig. 3



4. Remove the three screws from the 1 x 1 piece of wood (Fig. 4).
5. Remove damaged chair back and discard the used screws.

Fig. 4



Seat Back Replacement

1. Insert the new chair back by aligning the chair back notches with the base of the chair (Fig. 5 and Fig. 6).



Fig. 5

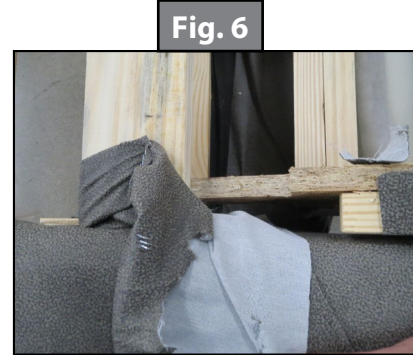


Fig. 6

2. Slide the chair back into the base (Fig. 7).
3. Using (3) #8 - 10 x 1 screws fasten the new chair back onto the chair base (Fig. 8).



Fig. 7

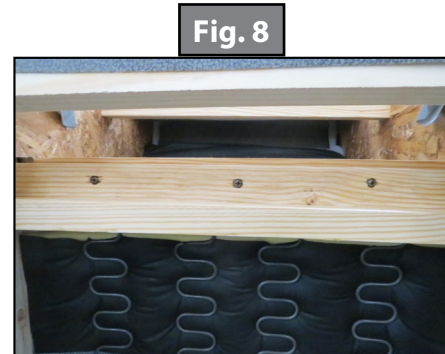


Fig. 8

4. Realign the vinyl along the sides of the chair. Staple the vinyl to the chair back along the sides (Fig. 9A and Fig. 9B).
5. Realign the vinyl on the bottom of the chair back and staple (Fig. 10A).

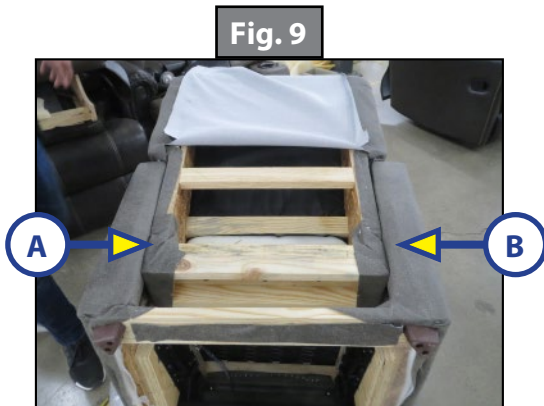


Fig. 9

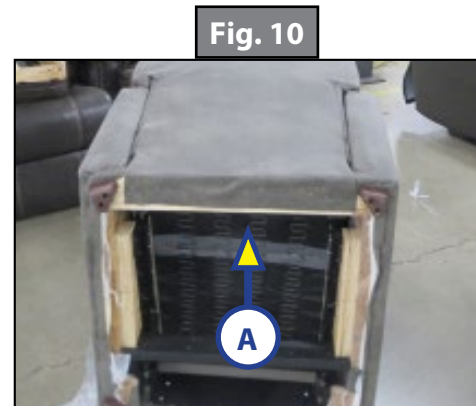


Fig. 10

As a supplier of components to the RV industry, safety, education and customer satisfaction are our primary concerns. Should you have any questions, please do not hesitate to contact us at (574) 537-8900 or by email at customerservice@lci1.com. Self-help tips, technical documents, product videos and a training class schedule are available at lci1.com or by downloading the MyLCI app.