

**Table of Contents**

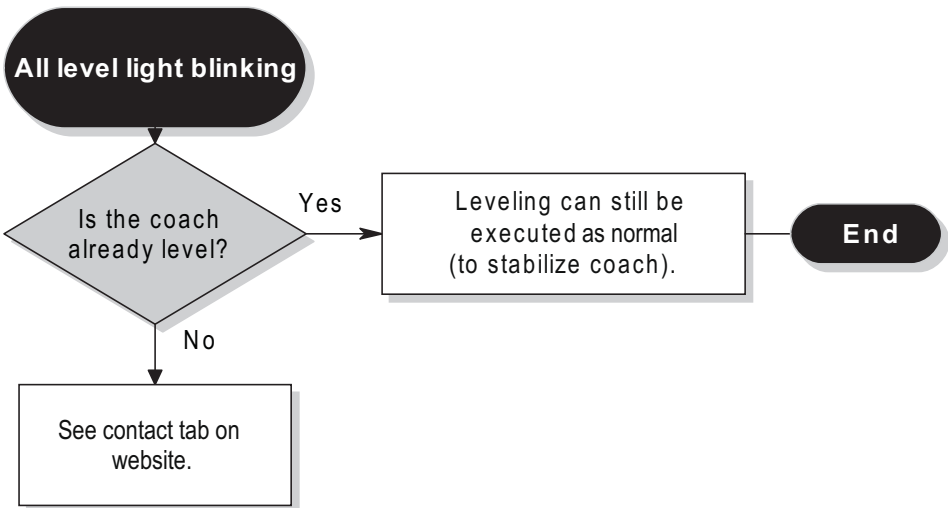
	Page
<i>PowerLevel</i>	
Already Level	2
Panel Communication	2
Park Brake	3
Emergency Retract	4
Zero Mode	5
Out of Level Tolerance	5
Wait	6
Low Voltage	6
Failure Mode	7
<i>Level Best</i>	
Fault Code 1	9
Fault Code 2	10
Fault Code 3	11

# Hydraulic Leveling System Troubleshooting Flowcharts

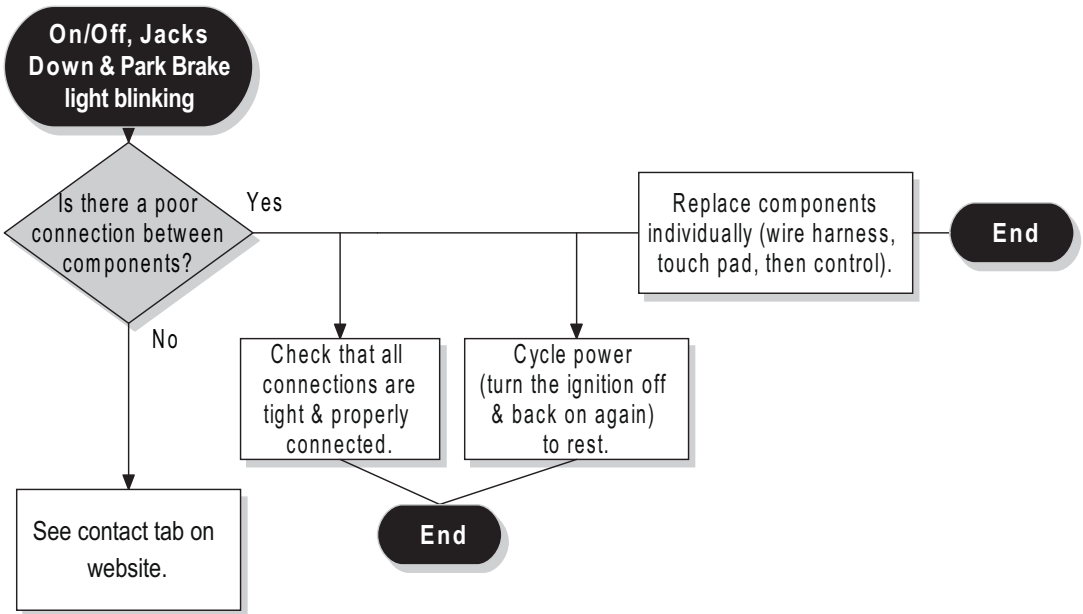
**powergear®**  
**PowerLevel™**  
▲ s e r i e s ▲  
**Power DOWN/Spring Return**

**LEVEL**  
2 0 0 0  
2 0 0 1  
3 0 0 0  
3 0 1 0  
*Best*  
**Power UP/Power Down**

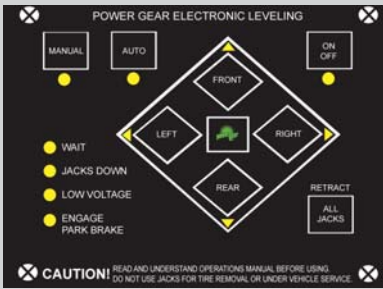
### Already Level



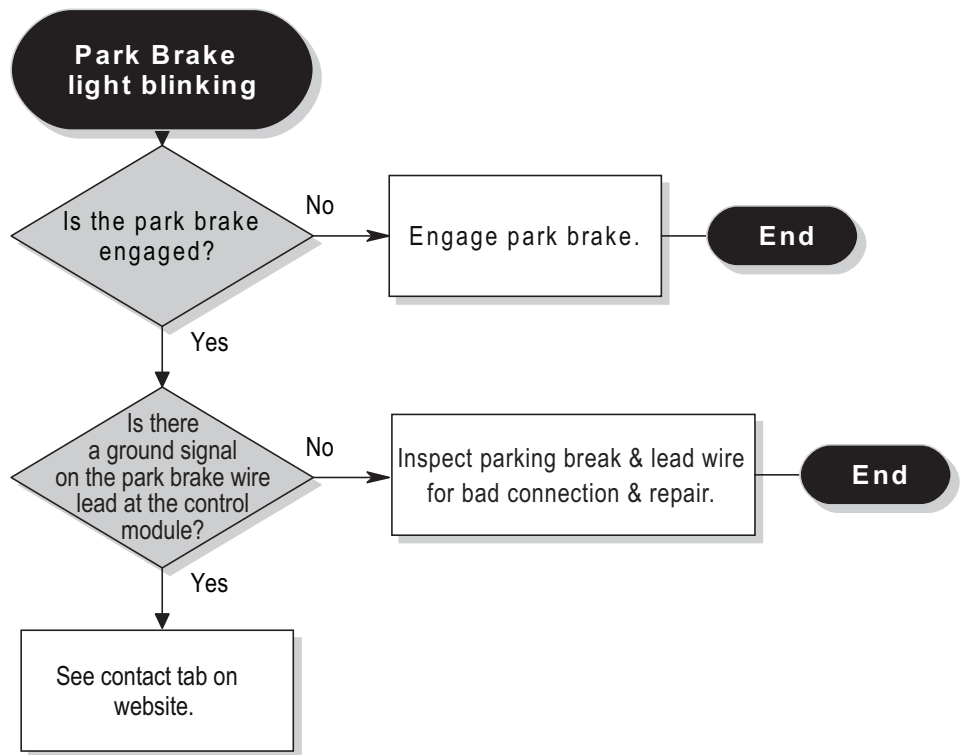
### Panel Communication Error



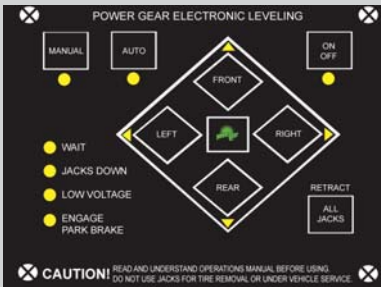
Check [www.LCI1.com](http://www.LCI1.com) for the latest manual & tip sheet information



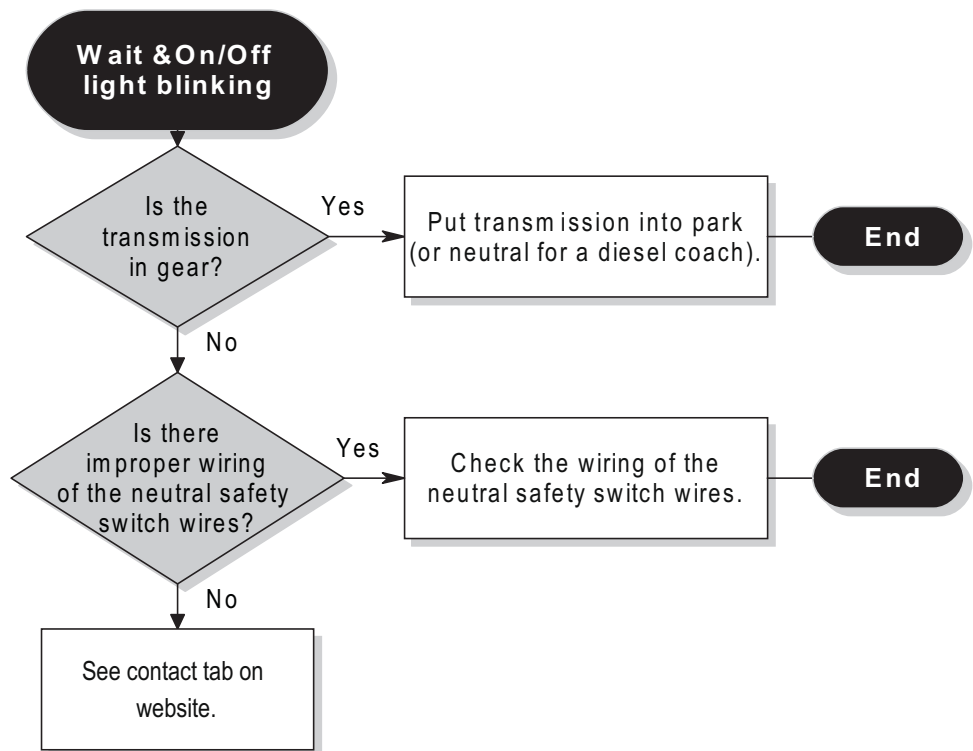
## Park Brake



Check [www.LCI1.com](http://www.LCI1.com) for the latest manual & tip sheet information

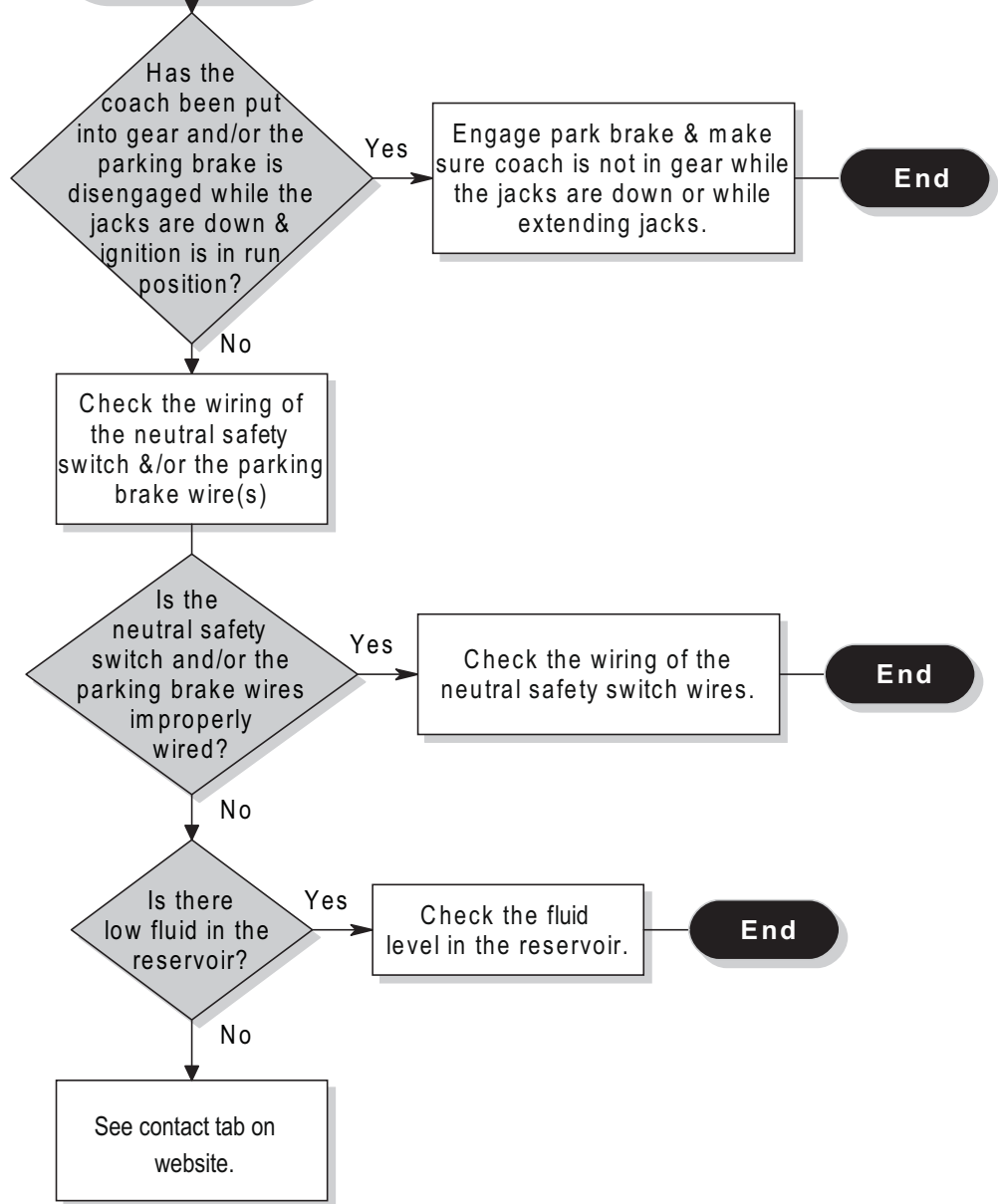


## Transmission

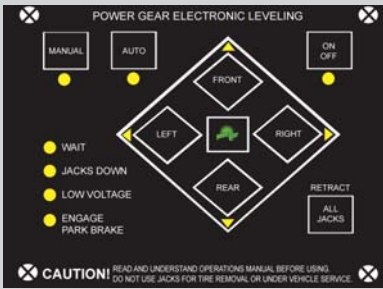


## Emergency Retract

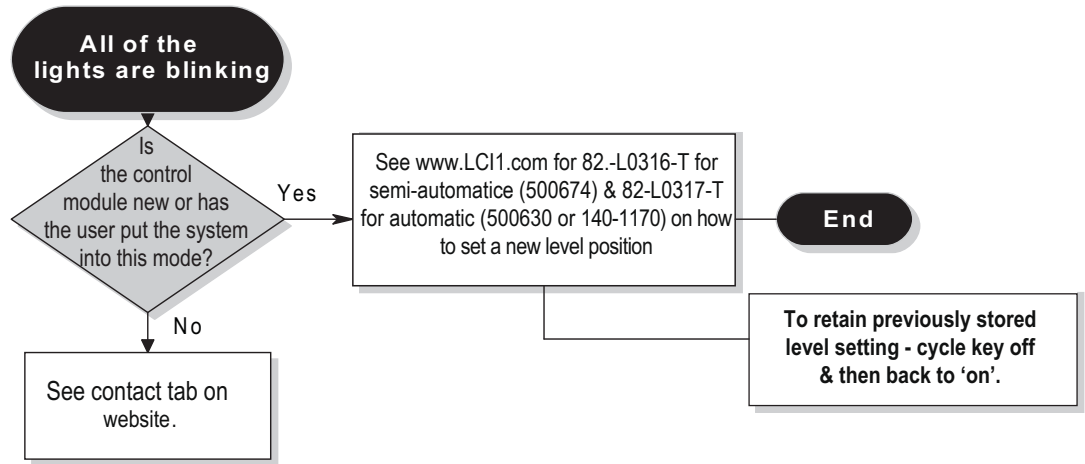
All lights are blinking  
(buzzer is also on &  
jacks are retracting)



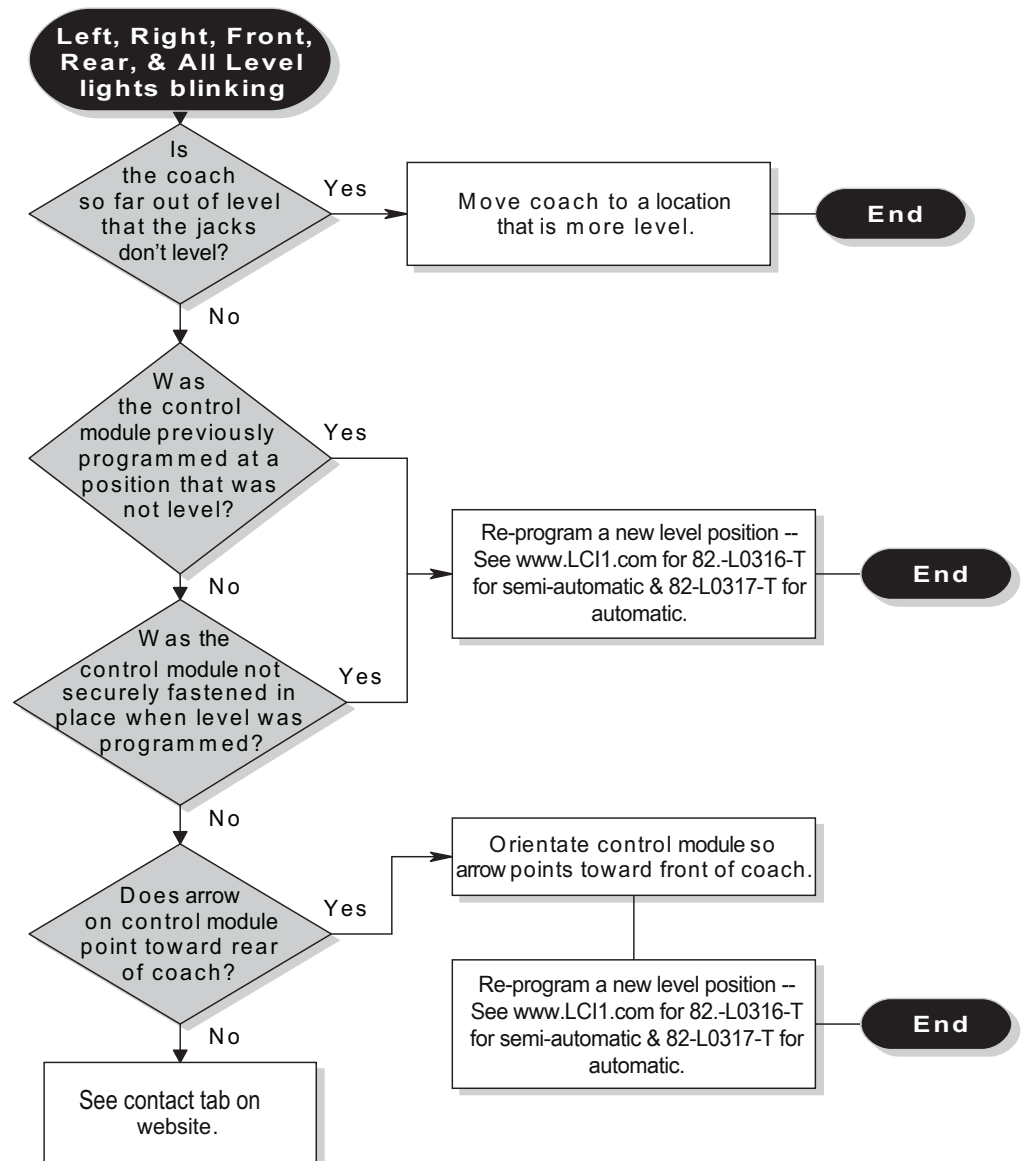
Check  
[www.LCI1.com](http://www.LCI1.com) for the  
latest manual & tip sheet  
information



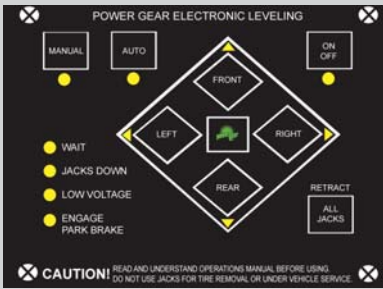
## Zero Mode



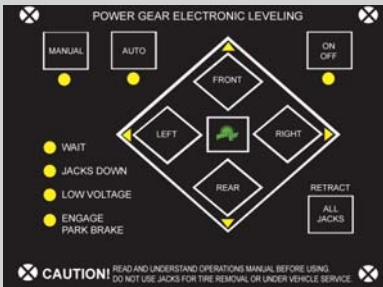
## Out of Level Tolerance



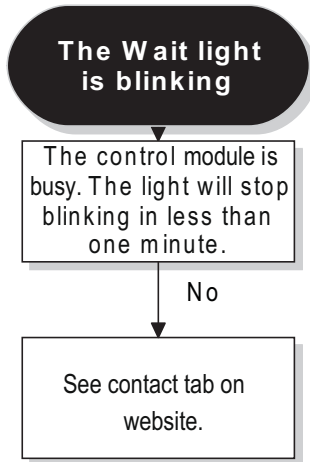
Check [www.LCI1.com](http://www.LCI1.com) for the latest manual & tip sheet information



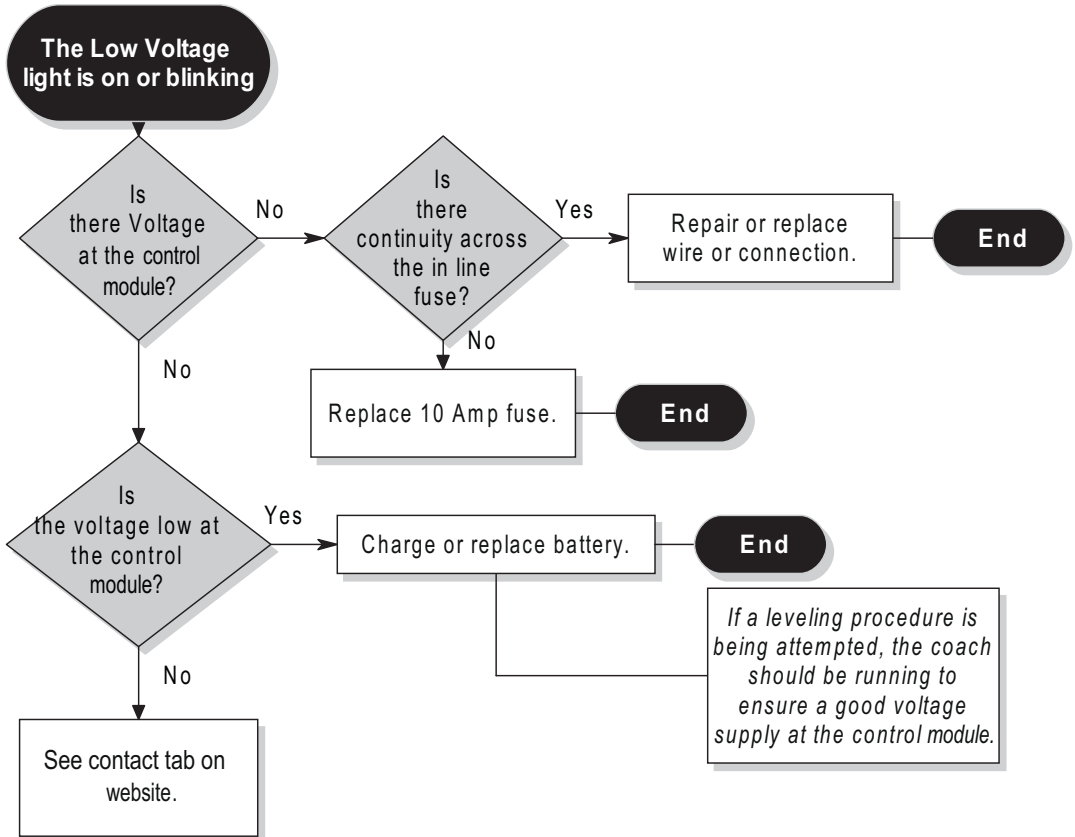
Check  
[www.LCI1.com](http://www.LCI1.com)  
 for the latest manual &  
 tip sheet information



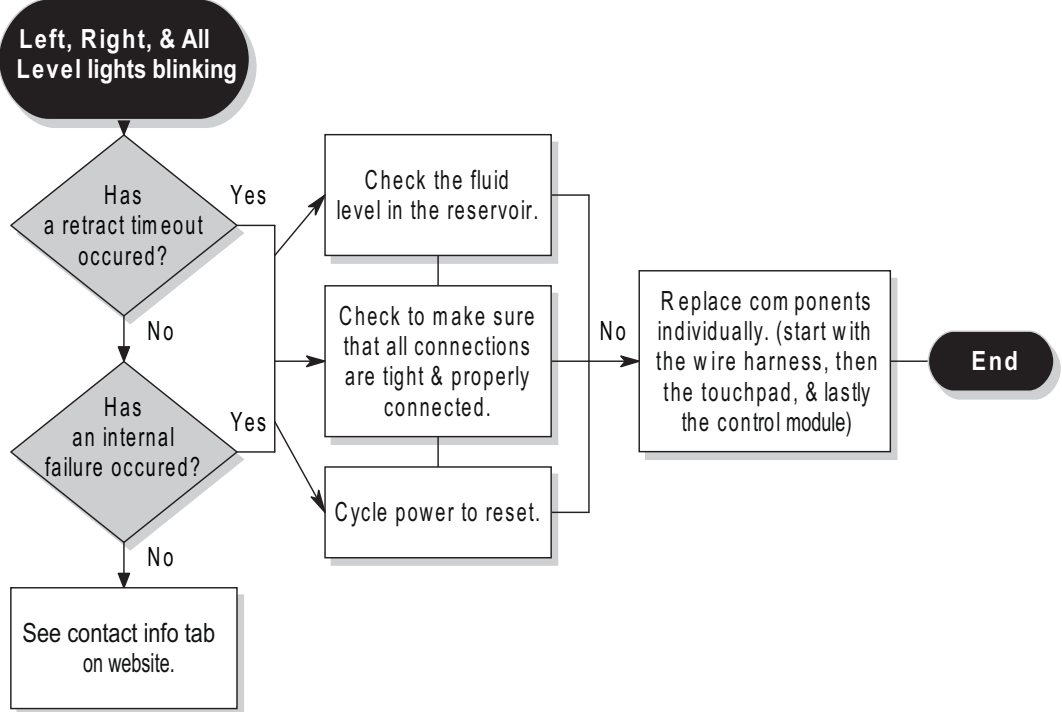
## Wait



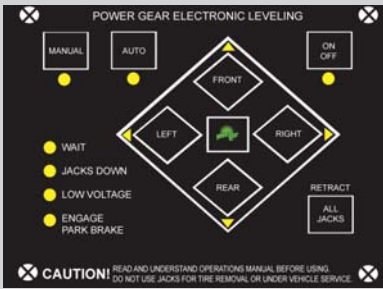
## Low Voltage



# Failure Mode



Check [www.LCI1.com](http://www.LCI1.com) for the latest manual & tip sheet information

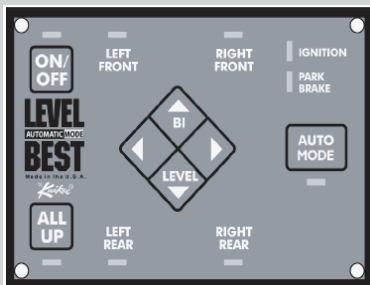


Check  
[www.LCI1.com](http://www.LCI1.com)  
for the latest manual &  
tip sheet information

# LEVEL Best

2	0	0	0
2	0	1	0
3	0	1	0

## Power UP/Power Down





## Fault Code 1

No lights are operational on panel

Disconnect 4-wire connector from module for 5-seconds and reattach.

Does the panel come on?

Yes

End

See contact tab on website to obtain p/n 1510000097 Power Harness.

No

Check voltage between RED wire & Black on 4-pin connector.

Check wiring between 10-pin and 6-pin connector and control module, repair.

Is voltage less than 12 volts?

Yes

Check for voltage at motor solenoid (RED wire), must be at least 12 Volts, repair charging system if not.

Check wiring between 4-pin connector (RED) & pump solenoid & 4-pin connector (BLACK) ground connection on pump.

No

Carefully remove touch panel from bezel, check 3-amp fuse.

**DO NOT use a knife or sharp instrument to remove touchpad.**

Fuse blown?

Yes

Replace fuse.

End

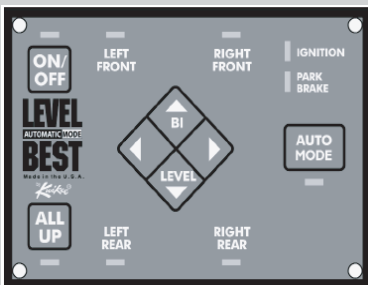
No

Replace control module.

No

See contact tab on website.

Check [www.LCI1.com](http://www.LCI1.com) for the latest manual & tip sheet information



### Fault Code 2

**One Jack leg wont move (all others do)**

Disconnect 2-wire connector at jack solenoid controlling jack operation.

Using voltmeter between WHITE & GREY wire connector, have assistant depress button on touch pad to operate jack in question.

Check battery changing system for 12+ VDC, repair.

Check wiring between 10-pin and 6-pin connector and control module, repair.

Is reading less than 12 volts?

Check WHITE wire from connector to 10-pin or 6-pin connector, repair.

Check GREY wire from connector to motor solenoid, repair.

Check [www.LCI1.com](http://www.LCI1.com) for the latest manual & tip sheet information

Reading not between 8.5-10 ohms?

Replace leg solenoid.

**End**

Remove leg solenoid and bench test.

Is there no clicking or movement with 12 VDC?

Replace leg solenoid.

**End**

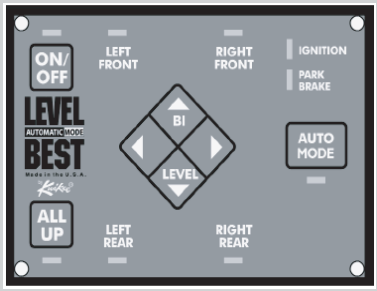
Remove top hose or bottom hose and operate jack.

No fluid output from hose?

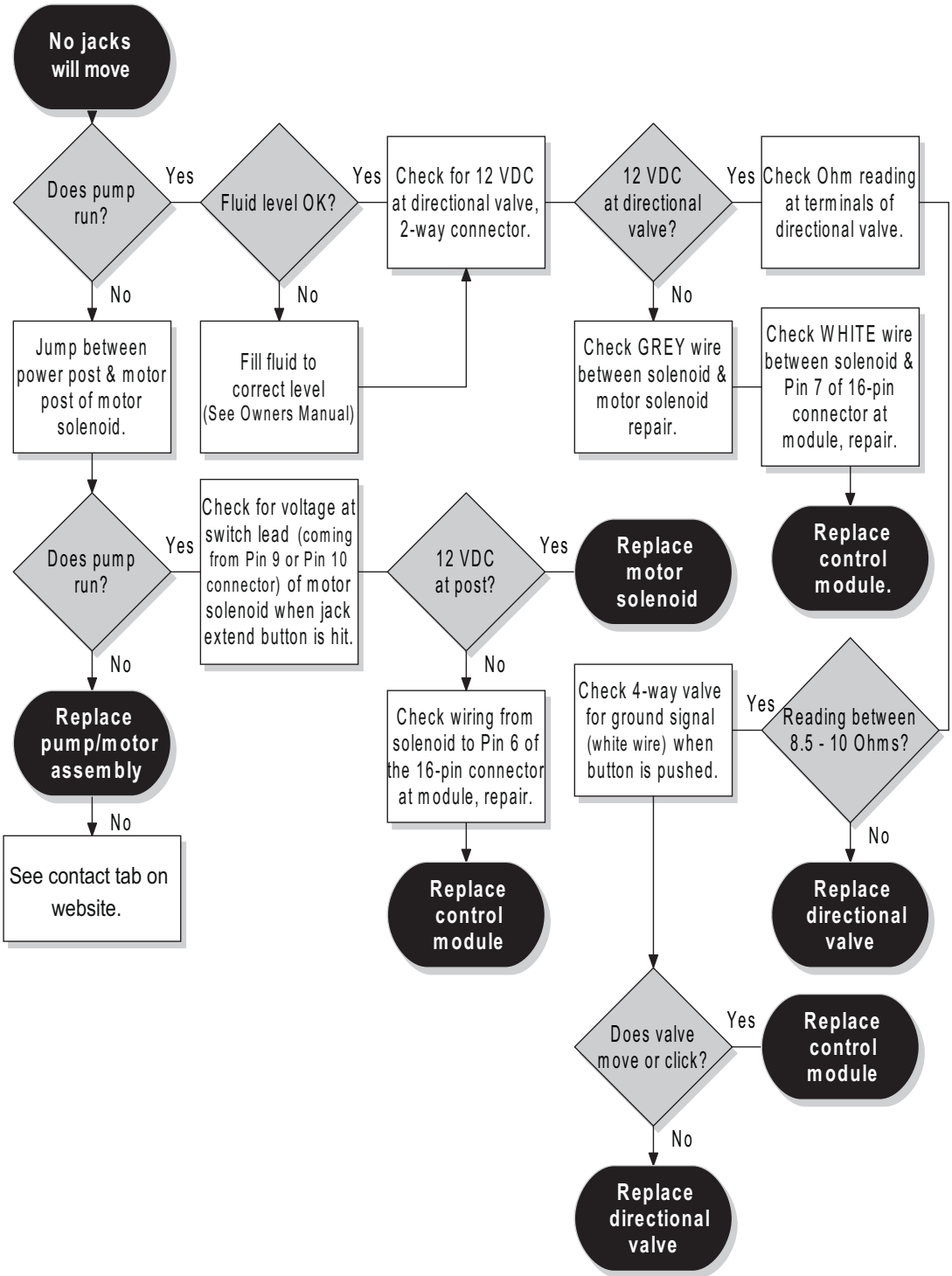
Check for kinked hose to jack.

Replace control module.

See contact tab on website.



### Fault Code 3



Check [www.LCI1.com](http://www.LCI1.com) for the latest manual & tip sheet information

