



Replacement of Touchpad
151000061, Front Sensor
151000058 or Rear Sensor
151000059

© Copyright PowerGear Issued: December 2013

#82-L0525, Rev. OA

Read, understand and follow these instructions.

! WARNING

If one or more of the original components needs to be replaced, all 3 parts must be changed out to the new style system.

DO NOT MIX OLD COMPONENTS AND NEW COMPONENTS.

! NOTE

Arrow on control box **MUST** be facing towards the front of vehicle when mounted.

This document provides instructions to replace the existing touchpad, control box and rear sensor. **See WARNING to the left.**

The repair kit is a part number 1010002618. This consists of a leveling control box, LCD touchpad, rear sensor, and front to rear sensor harness pigtail and a mounting bracket for the control box.

Instructions

STEP 1: REPLACING THE CONTROL BOX

Remove the battery power and ground from the control box. Unplug the harnesses from the existing control box and remove the mounting screws (keep the mounting screws to mount the new bracket) from the control box.

Install the new control box (**Figure 1**) upside down inside the included bracket (**Figure 2**). Do not plug in the harnesses (**Step 4**) until all components are hooked up and are ready to calibrate the control box (**Step 5**).

The 6 pin main power connector (**Figure 7**) harness on pin 1 and pin 6 will need to be hooked up to a constant ground signal. This was not used on the original control box.

Mount the control box and mounting bracket correctly. The arrow on the control box pointing to the front of vehicle needs to be positioned correctly (**see Note to left**). Use the existing mounting holes using the screws removed in Step 1.



Figure 1 Control Box

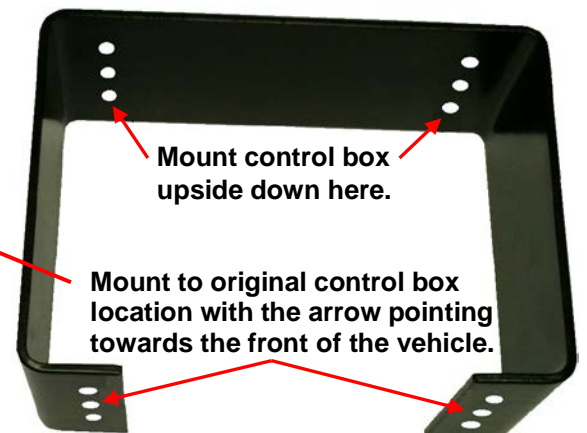


Figure 2 Mounting Bracket

STEP 2: REPLACING THE TOUCHPAD

Remove the existing touchpad from its location inside the vehicle (keep the mounting screws for the new touchpad). Unplug the harness and keep the harness within reach.



WARNING

If one or more of the original components needs to be replaced, all 3 parts must be changed out to the new style system.

DO NOT MIX OLD COMPONENTS AND NEW COMPONENTS.

The new touchpad (**Figure 3**) fits into a plastic bezel (**Figure 6**). It is released by pressing down on a locking tab thru a slot at the front center top. A small flat headed screwdriver will be needed.

Remove the touchpad from the bezel and install the bezel into the location of the original touchpad. Use the template on Page 4 as a guide as it is bigger than the hole for the original touchpad. Run the touchpad harness thru the small hole in the right side of the back of the bezel.

Once the bezel is mounted securely, plug the harness into the back of the touchpad. To install the touchpad into the bezel, the bottom goes in first and to get the tab back into place, using the small flat headed screwdriver push down on the tab to clear the edge of the bezel. Be careful not break off the tab.

STEP 3: REPLACING THE REAR SENSOR

Unplug the existing rear sensor and remove the screws holding it down, keep these to mount the new sensor.

The original harness plug will not connect to the new sensor plug (**Figure 5**). The original sensor harness plug will have to be cut off and the new front to rear sensor harness pigtail (**Figure 4**) will have to be spliced and heat shrunk to the original sensor harness matching wire color for wire color.

Plug the new pigtail harness connector into the new rear sensor. Mount it using the original screws. Make sure to follow the label directions for correct orientation with the Front and Rear arrows pointing in the correct direction on the vehicle.

STEP 4: PLUGGING IN THE CONTROL BOX

Plug all the harnesses into the control box matching the correct harness plug with the control box plug.

On the 6 pin main power connector (**Figure 7**) pin 1 needs to be hooked to a constant ground signal. Pin 2 needs to be hooked to a constant ground signal and then a jumper wire added over to pin 6.

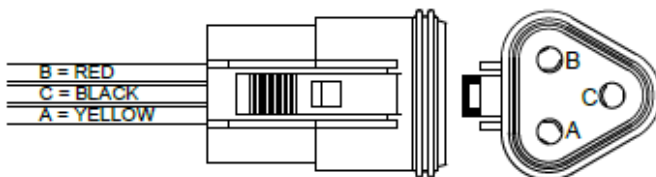


Figure 4 Front to Rear Sensor Harness Pigtail

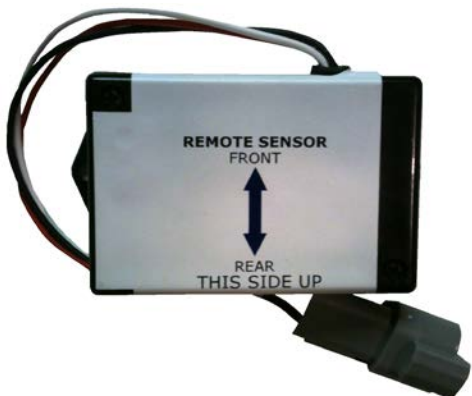


Figure 5 Rear Sensor



Figure 6 Touchpad Bezel

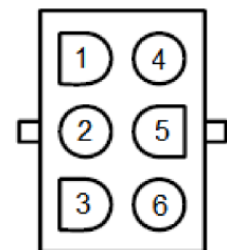


Figure 7 – Main Power Connector

NOTE

If one or more of the original components needs to be replaced, all 3 parts must be changed out to the new style system.

DO NOT MIX OLD COMPONENTS AND NEW COMPONENTS.

STEP 5: CALIBRATE THE CONTROL BOX

Procedure to be used to calibrate the Power Packer Automatic Leveling system with touchpad number 1510000217.

Zero Point: The zero point is the stored level position; the orientation that the control senses as level. This can only be set when the control has entered zero modes.

Set-Up & Calibration

On initial start-up of the system the touchpad will show in the display:

**** ZERO POINT ****
*** CALIBRATION ****

ENTER TO SET
POWER TO EXIT

It will flash between these 2 above. Also note that all 5 LED lights are flashing when in calibration.

1. Manually level the trailer by pressing the appropriate directional button(s) on the touch pad. Use an appropriate beam level for reference. Pressing a single button will actuate the indicated pair of legs; individual legs can be actuated by pressing the 2 buttons that describe the legs location on the trailer. The RETRACT button toggles between extend and retract modes.
2. Press the ENTER button to accept the current state as level.
3. The control will proceed through a self check of the system, and will then indicate that calibration was successful and then shut down. This usually takes no longer than 1 minute.
4. Calibration is complete. Done..

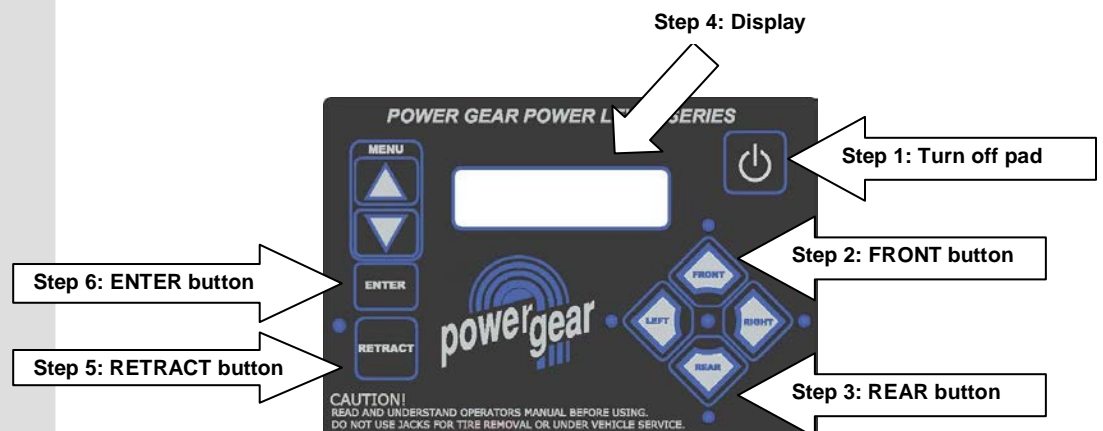


Figure 3 Touchpad



TOUCHPAD BEZEL MOUNTING TEMPLATE

