



TIP SHEET

Upgrade Procedure for Room Locks 907100111 & 907100112

© Copyright Power Gear Issued: January 2012

#82-S0519, Rev. 0F 11/18

This supersedes all previous revisions of this document.

⚠ WARNING

Room lock must be retracted before starting this operation.

⚠ NOTE

If you have Room Lock LH Assembly 907100111, order kit #1010002312. *This kit correctly has a "Right" motor.*

If you have Room Lock RH Assembly 907100112, order kit #1010002315. *This kit correctly has a "Left" motor.*

If you do not know which room lock is installed on the coach, contact the coach builder to determine the correct part before ordering parts.

You can also refer to step #10 in this document to see what motor is used to determine which kit is needed.

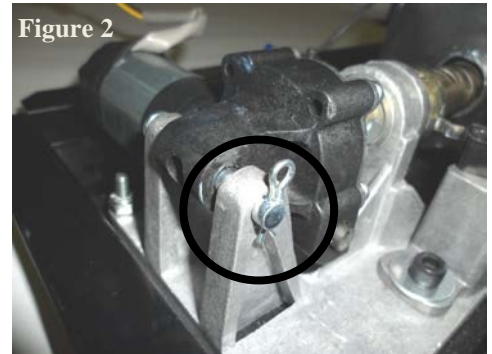
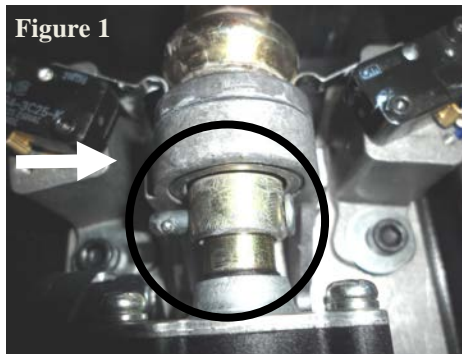


Read, understand, and follow all instructions in this document before starting.

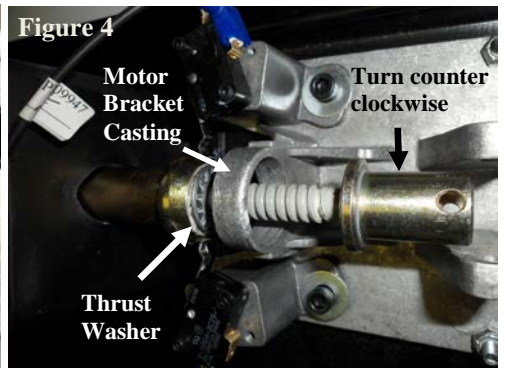
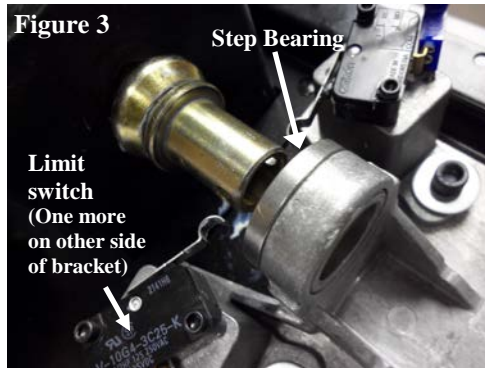
Due to potential variation in the motor performance, some room locks may become "jammed" when the room lock is fully retracted, and will not extend. This upgrade uses a Belleville washer and replacement motor to correct the problem.

Instructions

- 1) It will be necessary to gain access to the lock assembly motor.
- 2) Disconnect power from motor.
- 3) Remove clevis pin from end of drive screw (Figure 1).



- 4) Remove hair pin from end of clevis pin (Figure 2) and remove clevis pin from motor mount casting.
- 5) Push the drive nut/Acme screw assembly back toward the black rubber boot to remove the motor, and keep to return if under warranty.
- 6) With the drive nut/Acme screw assembly pushed back, remove step bearing (Figure 3).
- 7) Turn the Acme screw counter clockwise to remove from the drive nut. Acme screw will extend through motor bracket casting (Figure 4).
- 8) Remove thrust washer, and keep to return if under warranty.



CAUTION

Motor #1820130



Motor #1820131



- 9) Lubricate both sides of Belleville washer (Part #2010000474) with Sta-Lube Multipurpose Super White Grease SL3151 (or equivalent), and install with curve toward flange of the acme screw (Figure 5, 6, and 7).

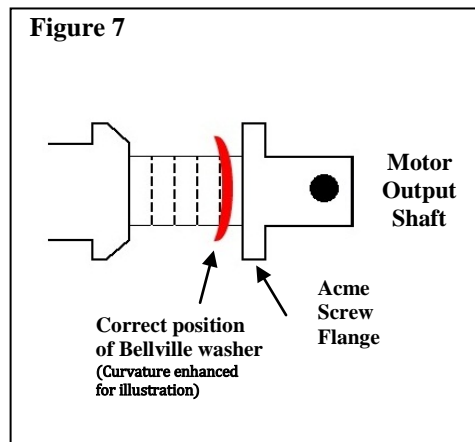
Figure 5



Figure 6



Figure 7



- 10) Reverse steps 2 thru 7 to re-assemble the room lock. You may have to turn the Acme screw or motor shaft to align the holes. **Make sure to use the new replacement motor during assembly.**
 For Left Hand Room Lock #907100111, use motor #1820131 (It will have "R" stamped into metal housing. See picture to the left).
NOTE: The motor "hand" position is opposite the assembly "hand" position.
 For Right Hand Room Lock #907100112, use motor #1820130 (It will have "L" stamped into metal housing. See picture to the left).
NOTE: The motor "hand" position is opposite the assembly "hand" position.
- 11) Verify operation of assembly by extending & retracting lock assembly several times.
 - 12) Test slide out room to make sure it moves out and in. If the room does not operate, check and adjust the two limit switches on the room lock.
 - 13) Re-install access panels as required.