



Troubleshooting Control Box 1510000236 or 1510000276 For In-Wall Slim Rack Systems

© Copyright Power Gear Issued: July 2014

#82-S0533, Rev. OD

Read, understand and follow all instructions in Installation and Service Manual 3010002813 before starting. This troubleshooting is for the In-Wall Slim Rack Auto-Program Slide-Out System with control box part number 1510000236 or 1510000276



! WARNING

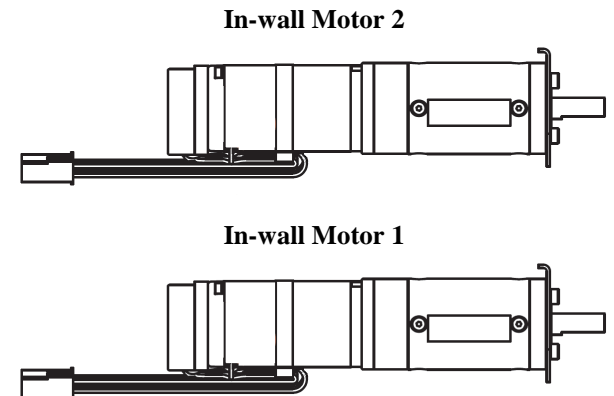
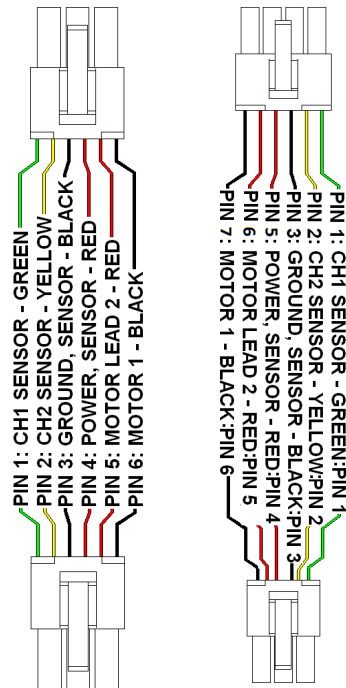
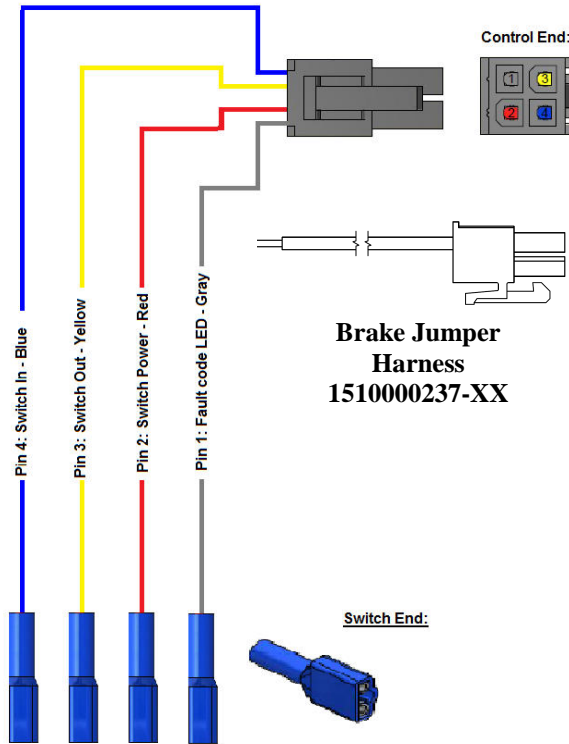
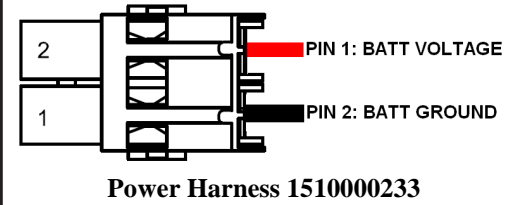
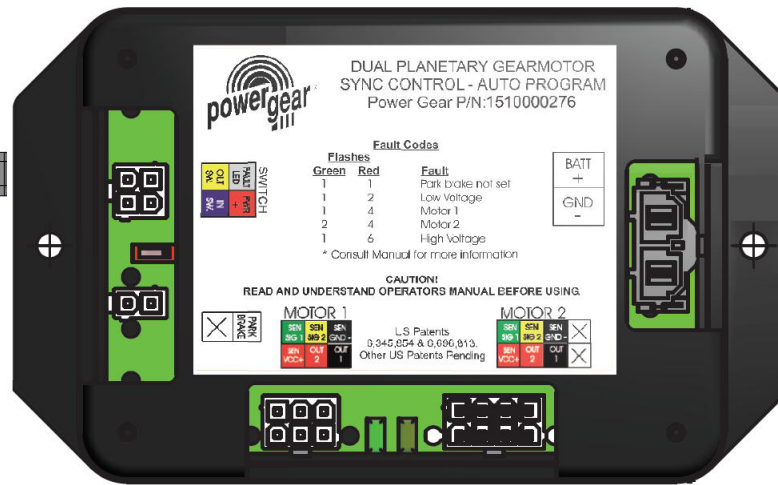
Always make sure that the room path is clear of people and objects before and during operation of the slide out room. Always keep away from the slide out rails when room is being operated. The gear assembly may pinch or catch on loose clothing.

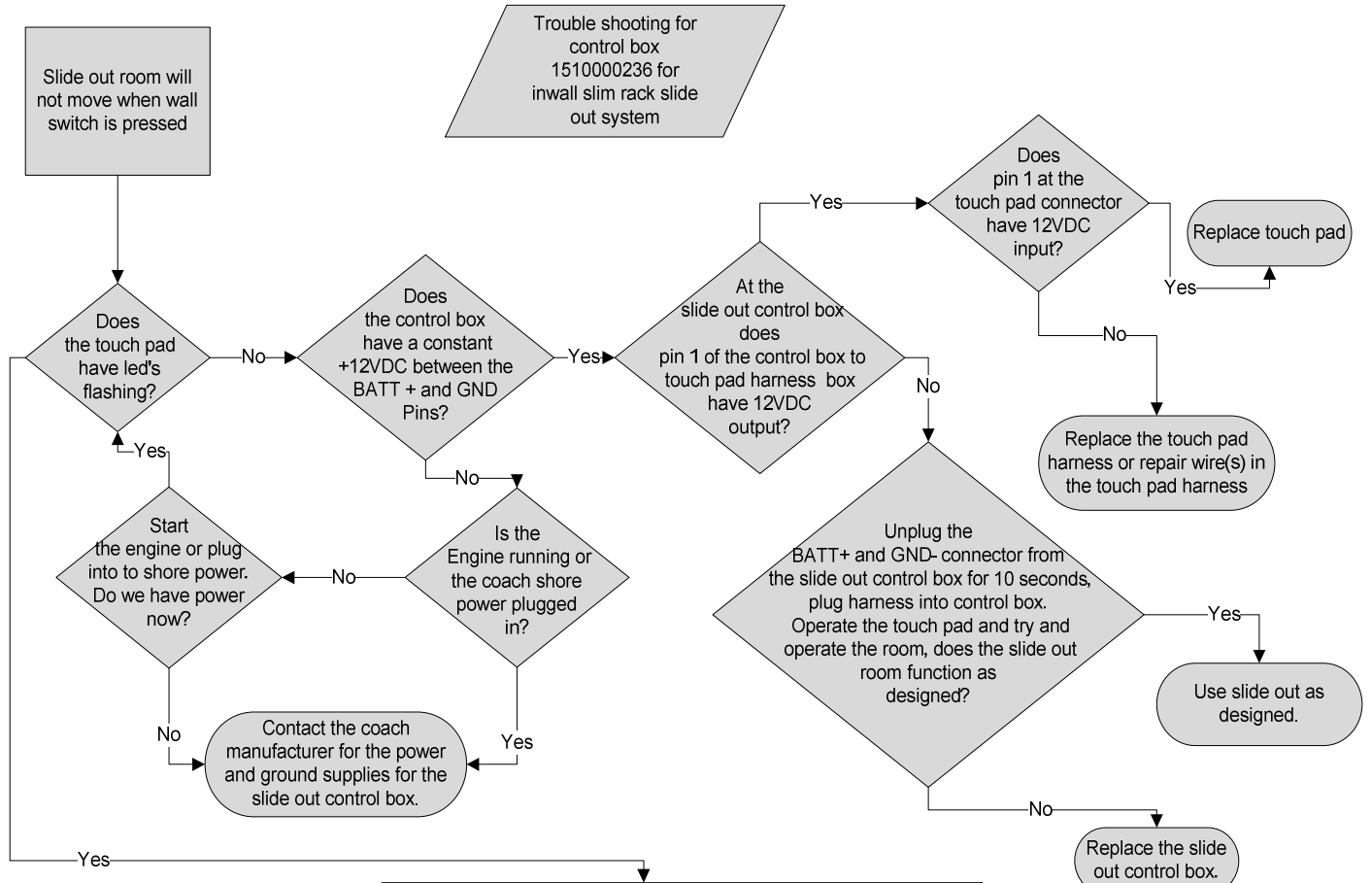
Introduction	1
Wiring diagram	2
Slide out room will not move when wall switch is pressed	3
Possible room obstruction troubleshooting	4
"A" 1 green LED and 1 red LED flashing on control box	5
"B" 1 green LED and 2 red LED flashing on control box	6
"C" 1 green LED and 4 red LED flashing on control box	7
"D" 2 green LED and 4 red LED flashing on control box	8
"E" 1 green LED and 6 red LED flashing on control box	9
Additional reference documents	10



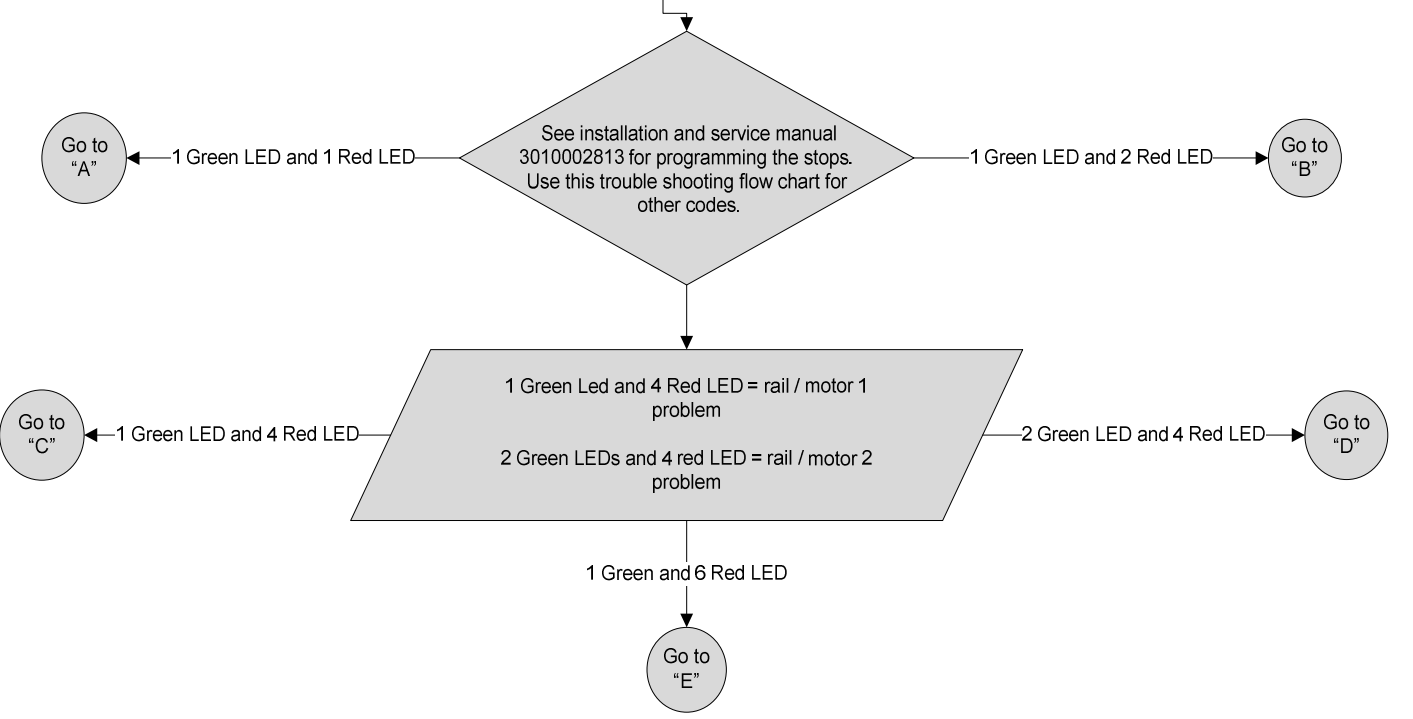
Wiring Diagram

Slide-Out Control Box 151000236

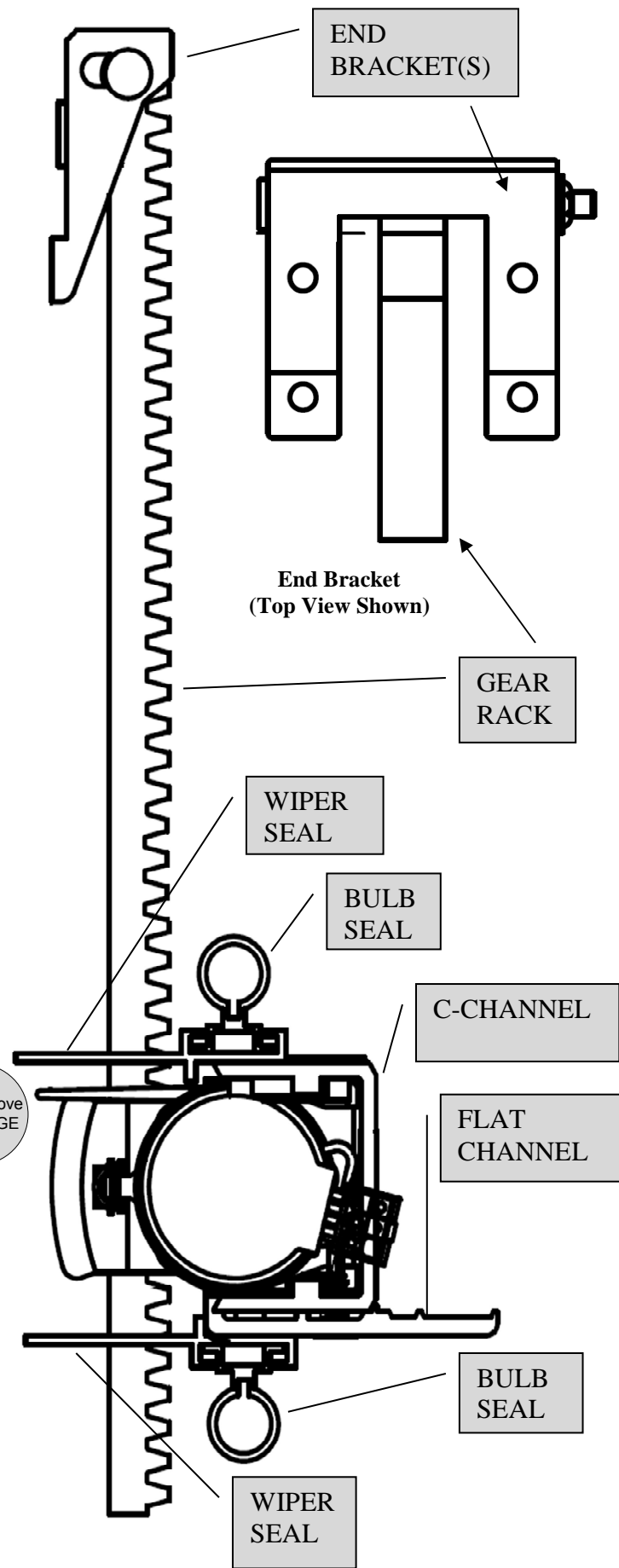
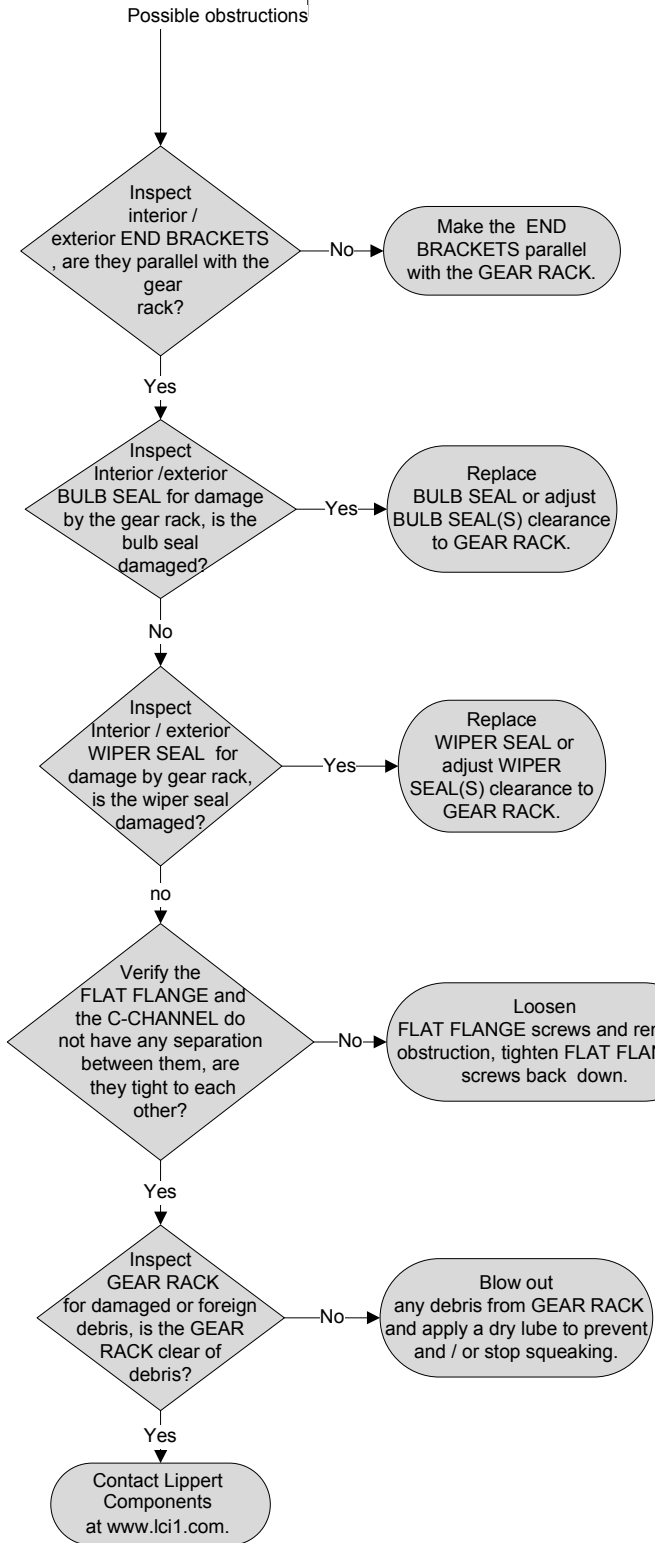


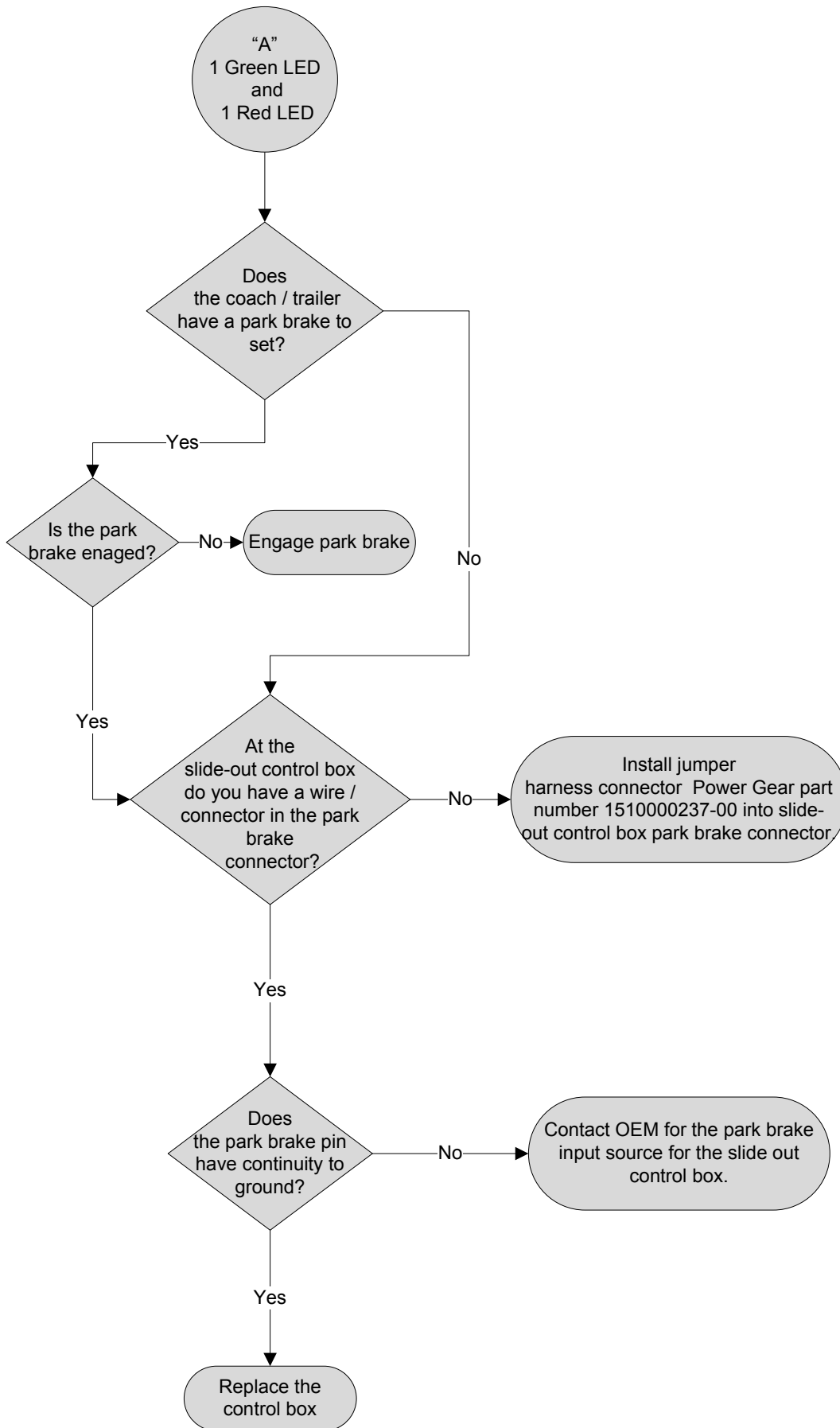


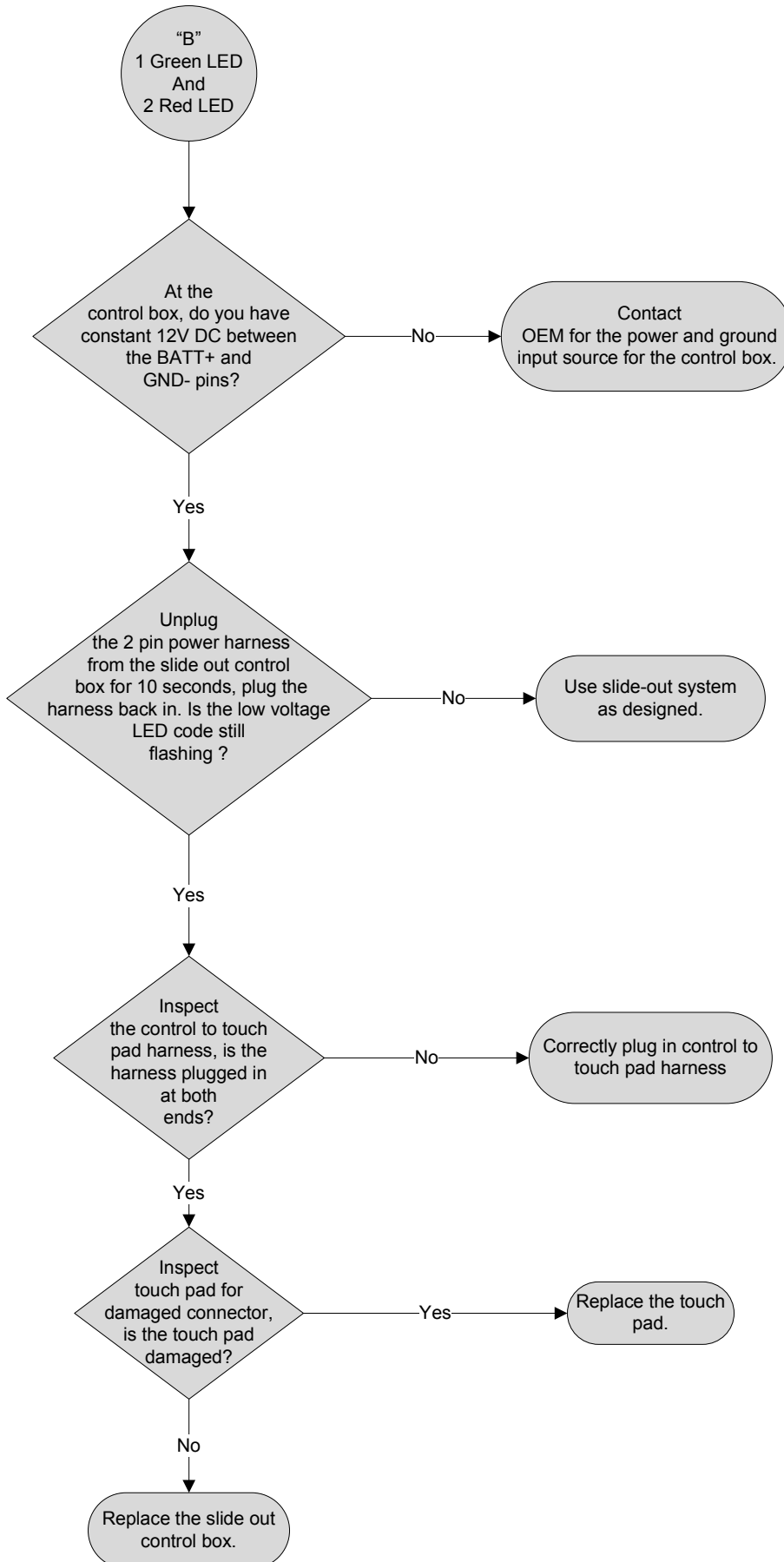
FAULT DIAGNOSTICS SECTION:
 The green LED indicates which rail / motor had the issue, the red LED indicates what the problem is. See the installation and service manual 3010002813 at www.lci1.com for the rail / motor location.

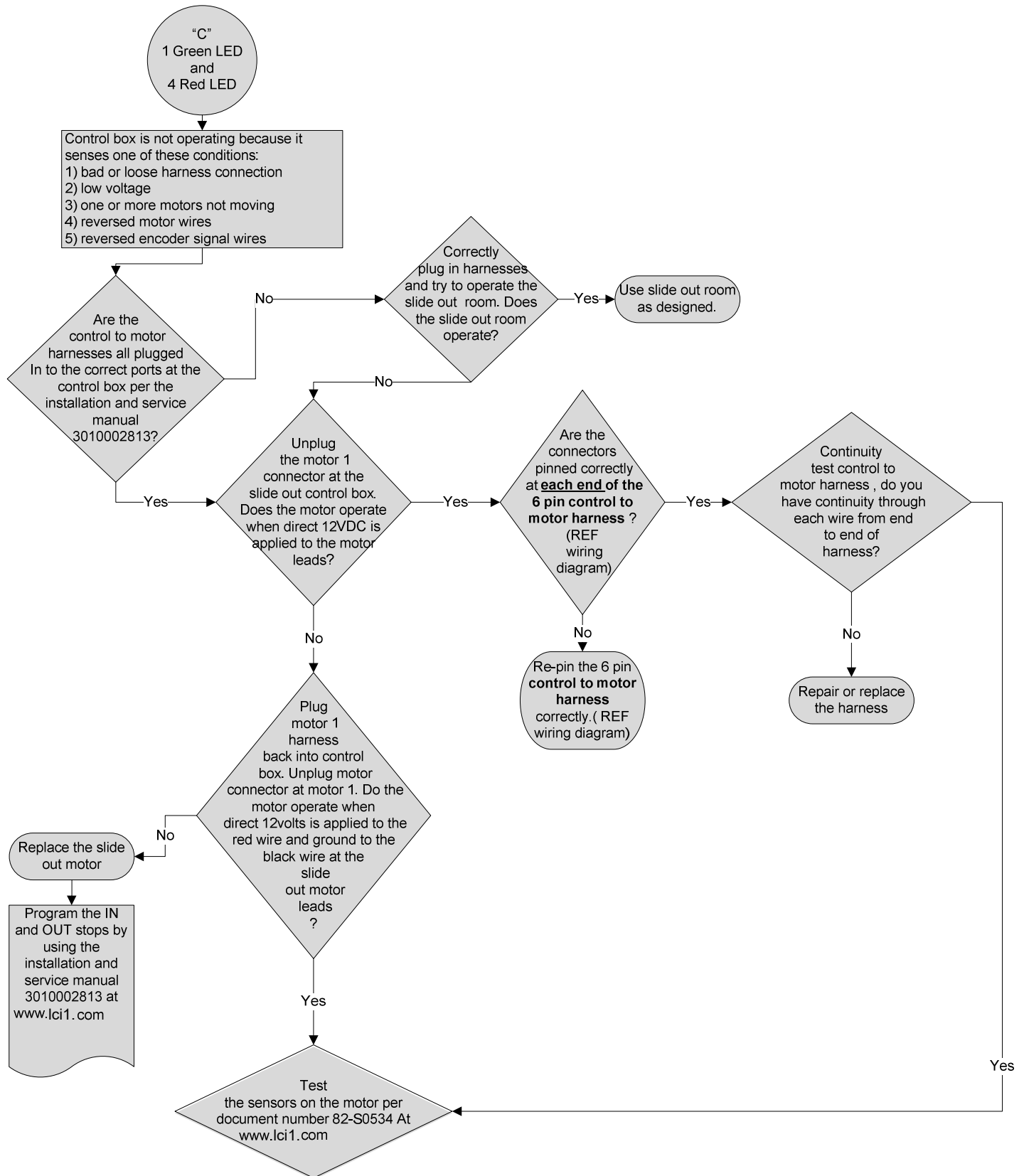


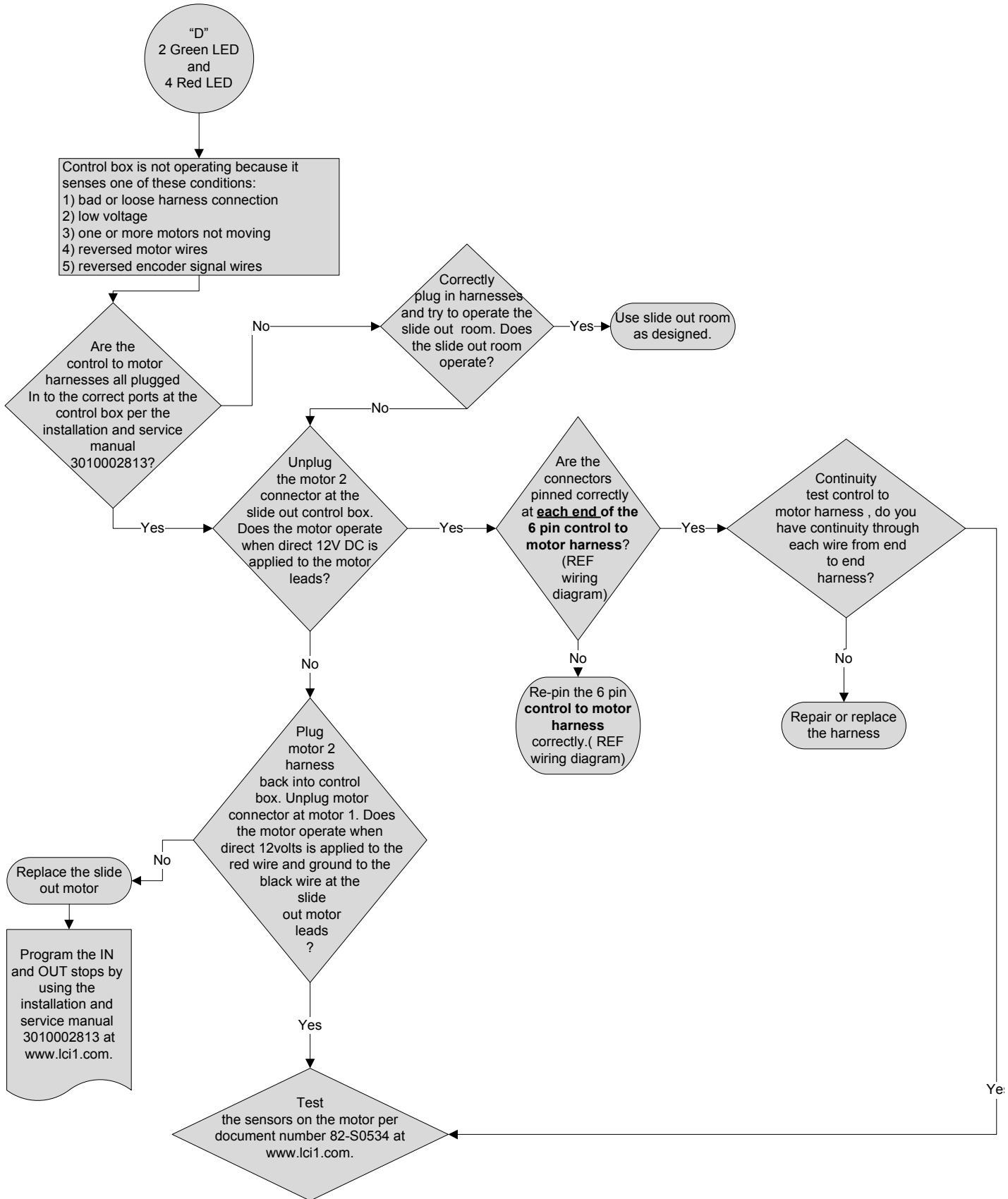
Run the room in the opposite direction. If the room continues to move in the opposite direction, remove the obstruction. If the room stops moving, observe the fault code on touch pad and refer back to FAULT DIAGNOSTIC SECTION in this flow chart.

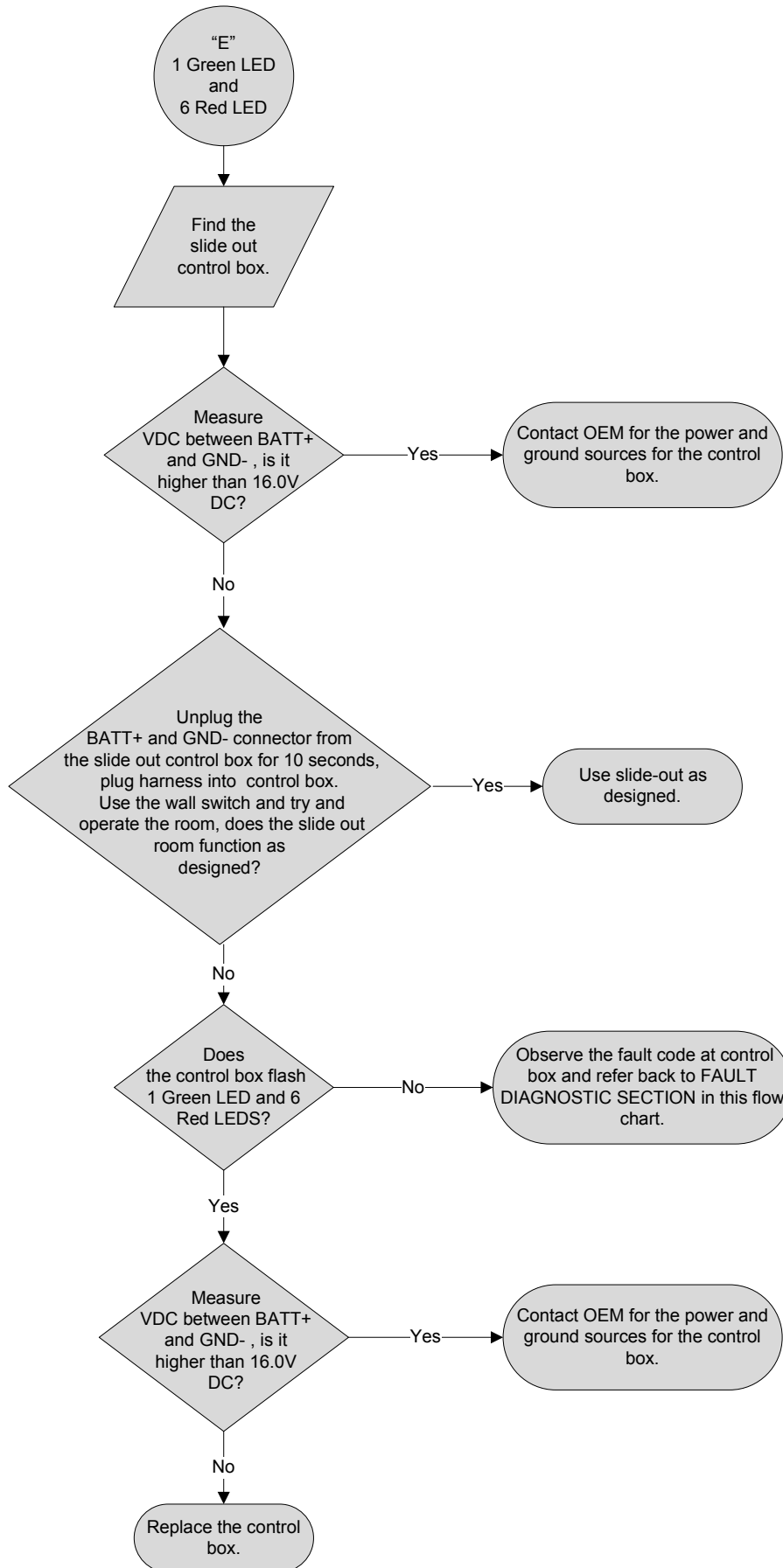












Additional Reference Documents Located At www.lci1.com.

<u>Document #</u>	<u>Description</u>
3010002813	Owner's manual slim rack in-wall slide out system control box part number 1510000236 or 1510000276
3010002814	Installation & service manual slim rack in-wall slide-out system control box part number 1510000236 or 1510000276
82-S0534	Encoder test 1 Dual planetary gear motor sync control part number 1510000236 or 1510000276
82-S0535	Encoder test 2 Dual planetary gear motor sync control part number 1510000236 or 1510000276