

WINDOWS

Purpose

This document outlines the procedure for replacing the pull rail (Fig. 1A) on the 8730 cockpit window and 8800 series windows.

Fig. 1



Safety

Read and understand all instructions before installing or operating this product. Adhere to all safety labels.

CAUTION

The “CAUTION” symbol above is a sign that a safety risk is involved and may cause personal injury and/or product or property damage if not safely adhered to and within the parameters set forth in this manual.

CAUTION

Always wear eye protection when performing service, maintenance or installation procedures. Other safety equipment to consider would be hearing protection, gloves and possibly a full face shield, depending on the nature of the task.

CAUTION

Moving parts can pinch, crush or cut. Keep clear and use caution.

Resources Required

- Rubber mallet
- Clean rag
- Rubbing alcohol
- 100% silicone sealant
- Large block of wood
- Small block of wood
- Ladder

Removal

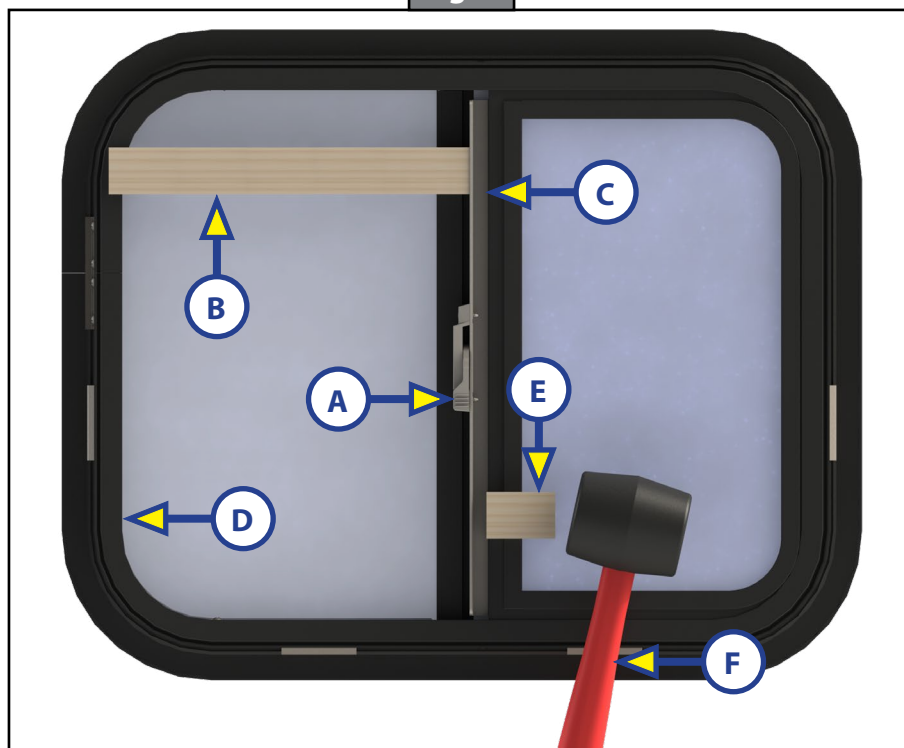
NOTE: If the pull rail and/or vinyl sleeve are already loose and/or removed, proceed to step 6 in the instructions.

1. Open the window latch (Fig. 2A).

NOTE: If removal is required, it may be necessary to use a block of wood to hold the window in place while removing the pull rail.

2. Place a large block of wood (Fig. 2B) in between the pull rail (Fig. 2C) and the window frame (Fig. 2D). Place the block of wood as close to the top of the window as possible.

Fig. 2



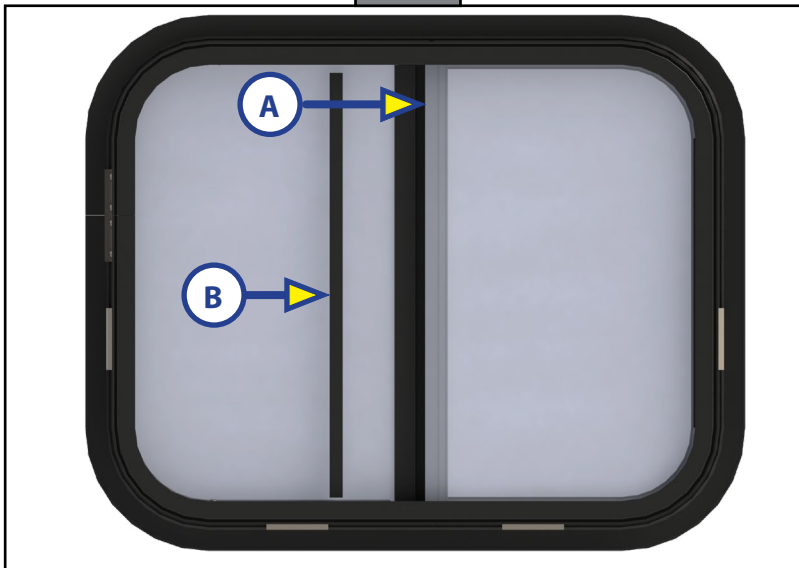
3. Using a small wood block (Fig. 2E) and rubber mallet (Fig. 2F), tap the pull rail off of the edge of the glass.
4. Once the pull rail has started to come loose, remove the large block of wood.
5. Remove the pull rail and vinyl sleeve from the edge of the glass.
6. Retain the vinyl sleeve for re-installation.

WINDOWS

Installation

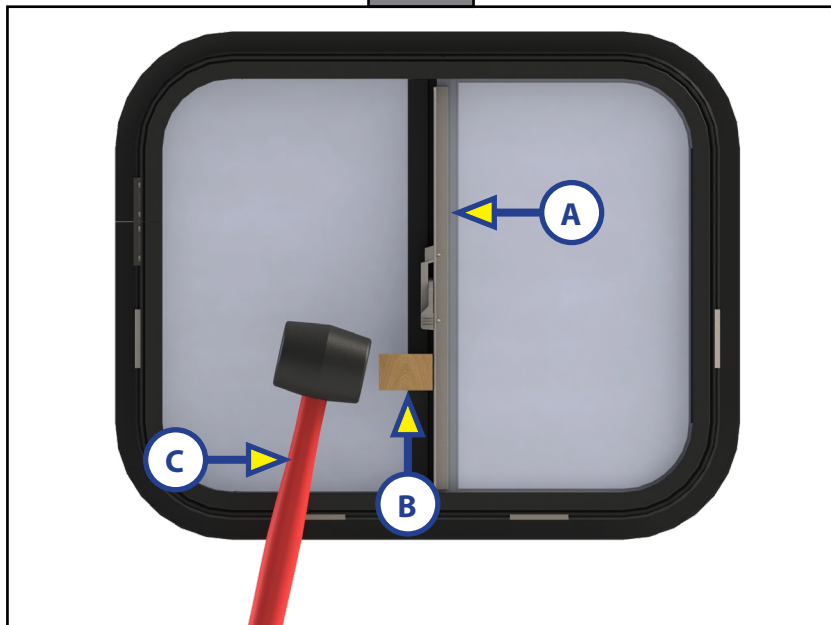
1. Wipe the glass edge (Fig. 3A) with rubbing alcohol to remove any dirt or grime.
2. Replace the previously removed vinyl sleeve (Fig. 3B) back onto the glass edge, making sure it is centered.

Fig. 3



3. Run a bead of 100% silicone either on top of the vinyl sleeve, or inside the pull rail.
4. Center the pull rail (Fig. 4A) onto the glass edge, then tap the pull rail into place using the small block of wood (Fig. 4B) and a rubber mallet (Fig. 4C).

Fig. 4



As a supplier of components to the RV industry, safety, education and customer satisfaction are our primary concerns. Should you have any questions, please do not hesitate to contact us at (574) 537-8900 or by email at customerservice@lci1.com. Self-help tips, technical documents, product videos and a training class schedule are available at lci1.com or by downloading the MyLCI app.