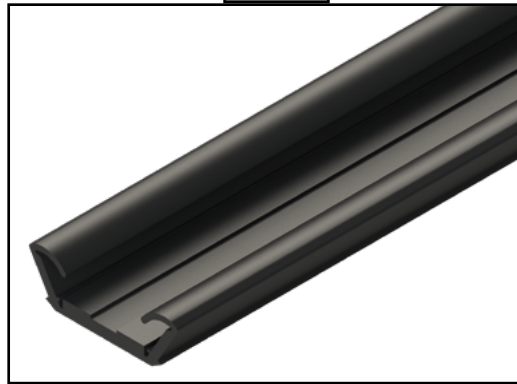


**WINDOWS**

## Purpose

This document outlines the procedure for reinstalling the vinyl track (Fig. 1) on 8600 series windows. With usage and general wear, the vinyl track can peel out of the window frame extrusion. In most cases, the vinyl is still good and just needs to be glued back into place.

Fig. 1



Replacement slider track available:

Part #	Description
235016	RM08610-03; 8600 Glass Run Channel

## Safety

Read and understand all instructions before installing or operating this product. Adhere to all safety labels.



The "CAUTION" symbol above is a sign that a procedure has a safety risk involved and may cause personal injury, product and/or property damage if not performed safely and within the parameters set forth in this manual.



**Moving parts can pinch, crush or cut. Keep clear and use caution.**

## Resources Required

- PPE gloves
- Disposable service cloth
- "Glue" - Adfast Corp. Cyanoacrylate Adhesive 501 4-1/50 GR (2 oz.)

## WINDOWS

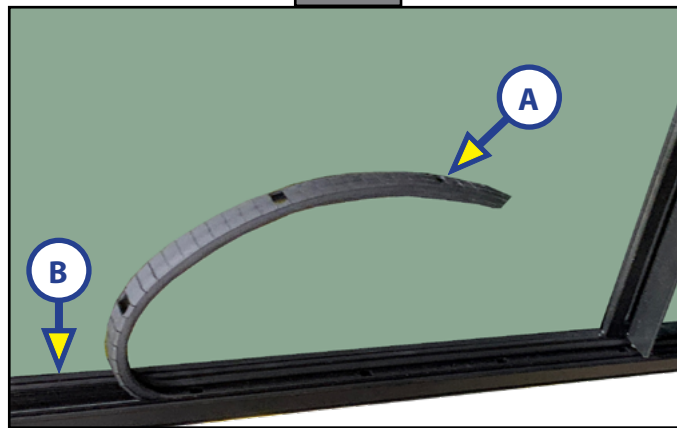
**Procedure**Preparation

1. Wear gloves to protect hands from the glue.
2. Lay a service cloth down on furniture near the window needing the vinyl track re-installation as glue can damage furniture.
3. Pull back curtains and move other fixtures around the window to create enough room to work and protect from glue.

Vinyl Track Re-Installation

1. Open the window to expose where the vinyl track is pulling away from window frame extrusion (Fig. 2).
2. Pull back the vinyl track (Fig. 2A) to expose the window frame extrusion where the vinyl track needs to be glued back into place (Fig. 2B).

Fig. 2



3. Gently bead glue down the window frame extrusion along the window side (Fig. 3A and Fig. 4A).

Fig. 3

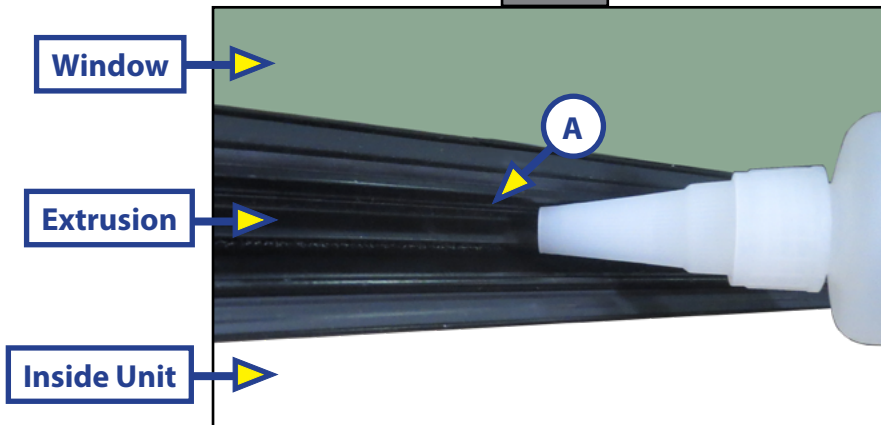
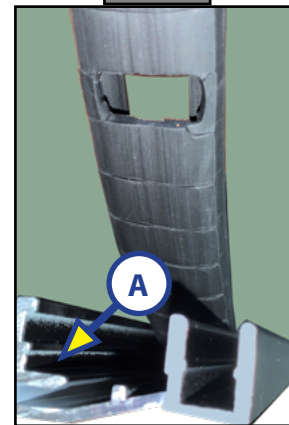


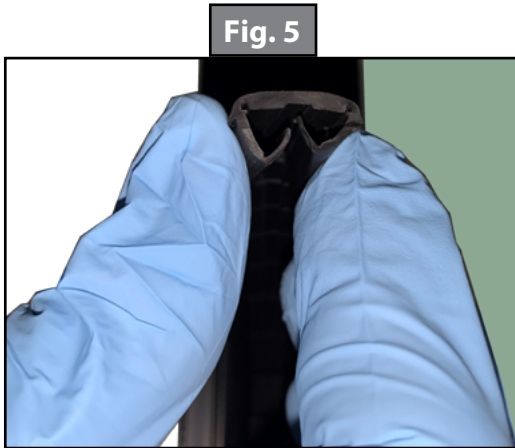
Fig. 4



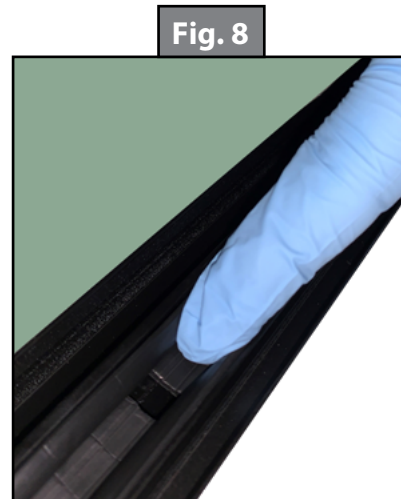
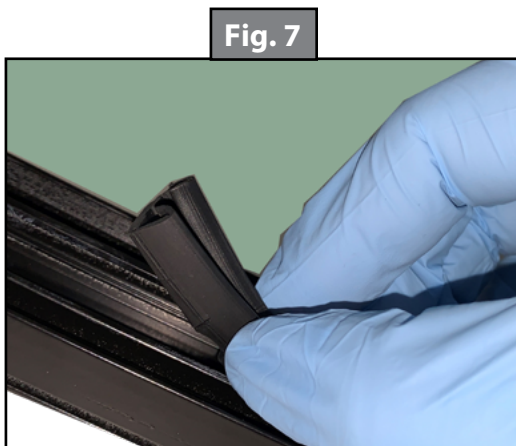
**NOTE:** Do **NOT** cover weep holes with glue on the window frame extrusion.

## WINDOWS

4. Immediately pinch (Fig. 5 and Fig. 6) and place (Fig. 7) the vinyl track down the window frame extrusion back into place.



5. Once the vinyl track is completely back in place, run a finger down the vinyl track channel to make sure the vinyl track and the window frame extrusion are securely glued together (Fig. 8).



6. Keep window open and allow the glue to set and dry for at least 15 minutes.

**NOTE:** This special glue is strong enough to potentially glue the window permanently closed.

7. Once the glue has dried and set, move around the window as necessary repeating the process to reinstall vinyl track around the window frame extrusion as necessary.

As a supplier of components to the RV industry, safety, education and customer satisfaction are our primary concerns. Should you have any questions, please do not hesitate to contact us at 432-LIPPERT (432-547-7378) or by email at [customerservice@lci1.com](mailto:customerservice@lci1.com). Self-help tips, technical documents, product videos and a training class schedule are available at [lippert.com](http://lippert.com) or by downloading the LippertNOW app.