



POWER GEAR® POWER UP/POWER DOWN LEVELING JACK INSPECTION

TSB Number:	08-002-19
Product:	Power Gear Jacks
Date:	March 20, 2019

Purpose

The purpose of this Technical Service Bulletin is to inform REV dealers of the need to inspect Power Gear Power Up/Power Down leveling jacks for common wear versus abnormal leakage.

Products Affected:

- 2016-2019 American Dream
- 2016-2019 American Eagle
- 2016-2018 American Revolution
- 2016 American Allegiance
- 2016 American Heritage
- 2016 American Tradition
- 2016 Monaco Dynasty
- 2018-2019 Monaco Marquis
- 2018-2019 Monaco Signature
- 2019 Discovery LXE

Model(s) Affected: Certain models depending on inspection results and approval for repairs.

Condition

For motorhomes affected by this TSB, there may be abnormal leakage experienced at the fittings or jack cylinder.

Instructions

Dealers are required to submit all claims to Lippert Components. Follow the procedure under the "Action Needed" section at the end of this TSB.

- READ THIS ENTIRE BULLETIN CAREFULLY BEFORE PROCEEDING AND FOLLOW ALL SAFETY PRECAUTIONS.
- Make sure to secure the keys, chock the wheels and engage the parking brake before looking at your leveling jacks.
- Review the list of affected units shown above in this TSB to ensure the motorhome you are inspecting is part of this campaign.
- Take a copy of this TSB with you when servicing this unit.



- PHOTOS WILL BE REQUIRED FOR THE FOLLOWING PROCEDURES. READ PHOTO REQUIREMENTS CAREFULLY AS INSUFFICIENT PHOTO DOCUMENTATION MAY RESULT IN CLAIM DENIAL.

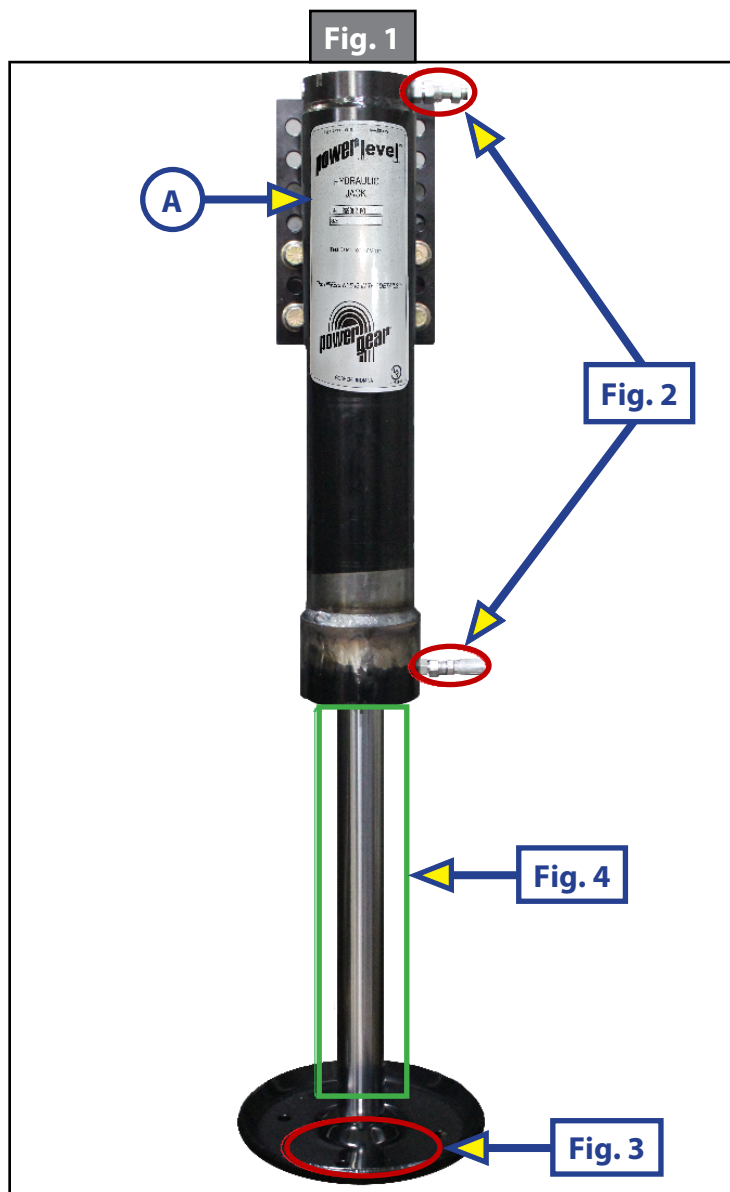
- If there are any questions after reviewing the entire procedure, contact LCI Technical Support by e-mail at customerservice@lci1.com or by phone at (574) 537-8900.

POWER GEAR® POWER UP/POWER DOWN LEVELING JACK INSPECTION

Inspection

External Leakage

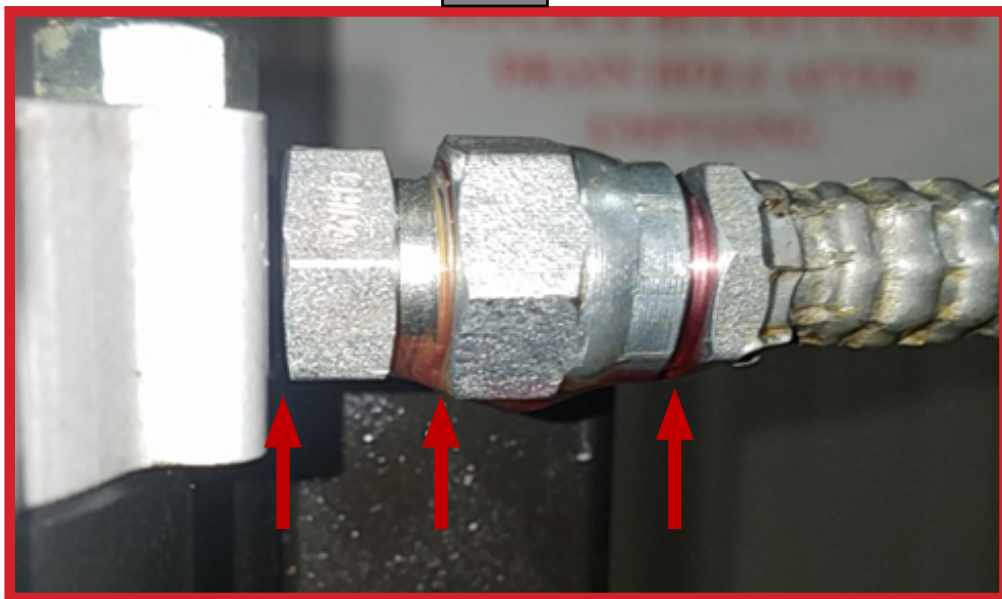
Visually inspect jack for external leakage (Fig. 1). For best results, run the auto-level and auto-retract sequence twice before performing visual inspection. If leaking is observed, verify all fitting connections are tightened to the correct torque and are not damaged. See attached TI-313 for torque specifications. Replace and tighten fittings as needed, clean the jack, and repeat the leveling sequence for additional visual inspection. If leaking persists, see the Action Needed section for information on ordering replacement jacks.



NOTE: See indicated figures for close-up views.

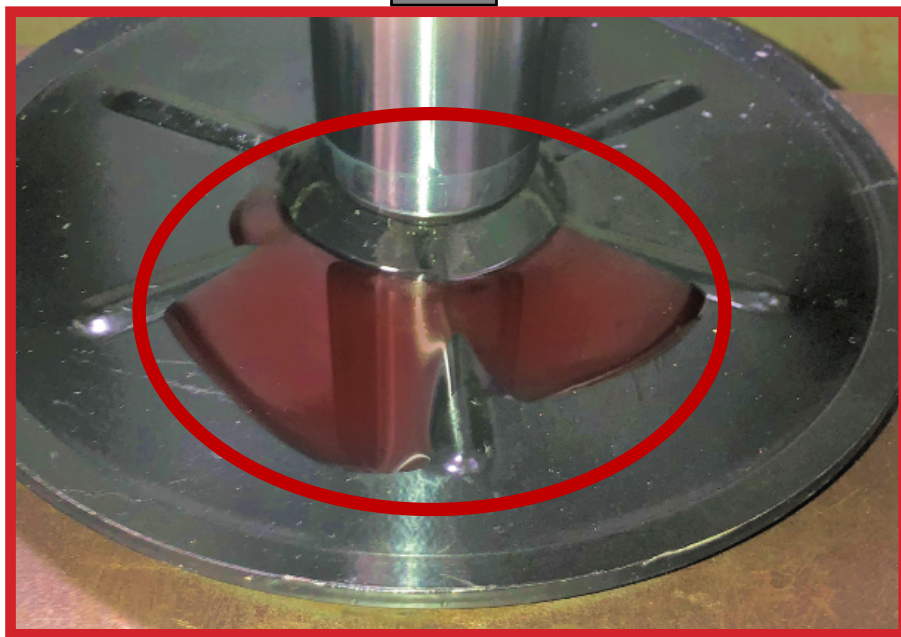
POWER GEAR® POWER UP/POWER DOWN LEVELING JACK INSPECTION

Fig. 2



Leaking fitting. Check fitting torque or replace fitting.

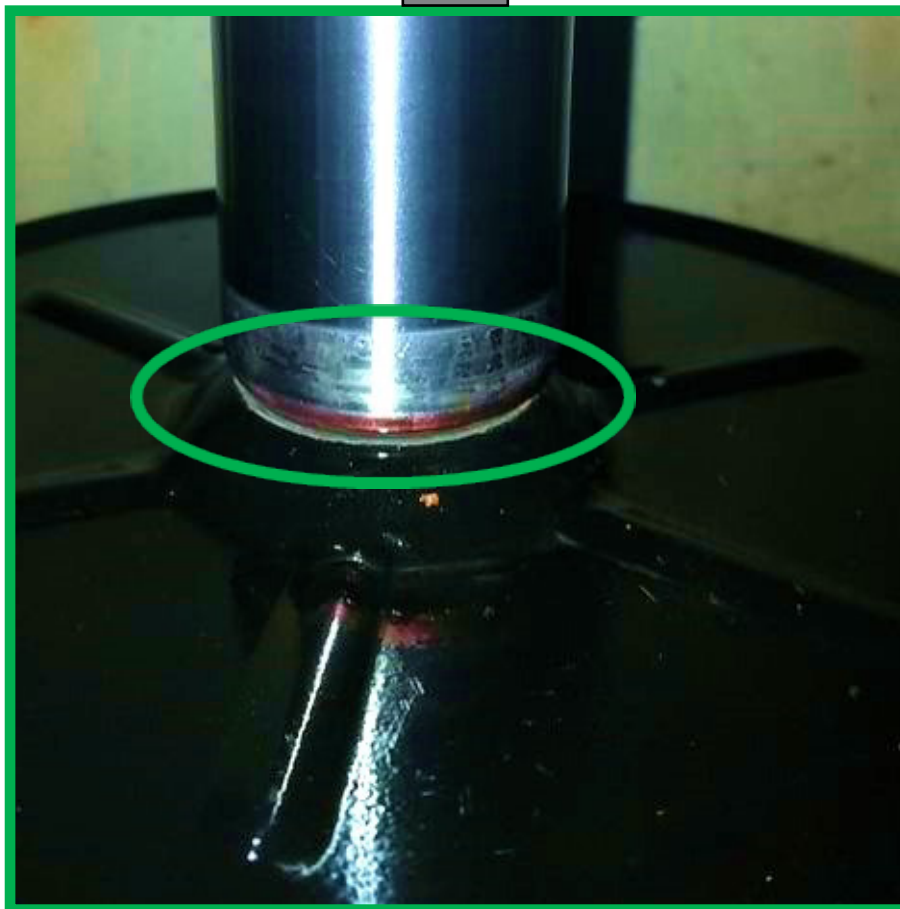
Fig. 3



Pooled fluid on footpad. Confirm fluid did not originate from a leaking fitting. If no leaking fitting is found, replace the jack.

POWER GEAR® POWER UP/POWER DOWN LEVELING JACK INSPECTION

Fig. 4



A light oil ring on the rod at any jack position is normal and not considered to be a leak. No repair necessary.



POWER GEAR® POWER UP/POWER DOWN LEVELING JACK INSPECTION

Action Needed

To replace components exhibiting continued leakage:

Visit the LCI website <https://store.lci1.com> and order:

LCI part number 359352 (Front Power Up/Power Down Leveling Jack)

or

LCI part number 359351 (Rear Power Up/Power Down Leveling Jack)

You may also submit an e-mail to LCI by using our e-mail address of customerservice@lci1.com and listing **REV Leveling Jack Inspection** in the subject line.

When submitting an e-mail, please include the following to minimize any shipping delays:

- Clear photos of the tag on affected jacks (Fig. 1A).
- Clear photos of leak areas along with any pooling on the jack pads.
- Clear photo of your Vehicle Identification Tag or include the below information when submitting an e-mail to LCI.
 - Full 17-digit VIN
 - Model of Unit
 - Coach Date of Manufacture
 - Retail Date of Purchase
 - Retail Owners Full Name, Address and Phone Number

You may also contact LCI via phone by calling (574) 537-8900, please have the above information ready to expedite assistance.

Once replacement components are received, please follow the installation instructions per attached LCI document TI-313 titled Procedures for Installation of Power Gear Leveling System Jacks.

**Warranty Labor Allowance: Inspection only 0.3 hour
Removal and Replacement of 1 Leveling Jack: 1.0 (hour)**

Please submit your completed claim to LCI by submitting via e-mail to customerservice@lci1.com and list **REV Leveling Jack CLAIM** in the subject line.

As a supplier of components to the RV industry, safety, education and customer satisfaction are our primary concerns. Should you have any questions, please do not hesitate to contact us at (574) 537-8900 or by email at customerservice@lci1.com. Self-help tips, technical documents, product videos and a training class schedule are available at lci1.com or by downloading the MyLCI app.



PROCEDURES FOR INSTALLATION OF POWER GEAR® LEVELING SYSTEM JACKS

TI-313

LEVELING AND STABILIZATION

Introduction

This document outlines the procedures for the installation of Power Gear® leveling system jacks and supersedes Power Gear TIP Sheet #37 81-1220 Rev. 4 in its entirety.

Procedures

Hose Installation

NOTE: Hose inspection is only needed near the jacks as part of this notice. It is not necessary to inspect the entirety of the hose route.

Route hose assemblies to avoid chafing on sharp corners or contact with extreme heat sources (i.e. exhaust manifolds or pipes). Where sharp corners are unavoidable, wrap the hose with plastic hose loom in the area where chafing can occur. Hoses must be routed at least 6" away from heat sources.

Replacement Parts
Hose: 1/4" ID 2750 Operating Pressure, SAE 100R7
Crimp Fitting: #4 JIC Female Swivel (7/16-20), 2750 Min Operating Pressure

Fastener Connection

All bolt/nut fasteners must be equally spaced on opposite sides of the leg mounting bracket.

NOTE: Preferred placement of the bolts is to use the top and bottom mounting holes on the leg weldment and have the middle set in the third hole from the top.

The leg mounting bracket should be located in the same location as the leg being removed. Or if new installation, it should be located to allow 8" - 10" ground clearance between the bottom of the jack shoe and the ground when parked on a flat, level surface.

All bolt/nut connections must have a locking mechanism on the threads to prevent loosening due to vibration, as follows:

1. A self-locking nut using a nylon insert or mechanical thread interference (welded onto a plate or loose) may be used.
2. A spring lock washer may be used.
3. A bolt without a lock washer or self-locking nut MUST have Loctite® 277™ or an equivalent bonding agent applied to the threads. Apply bonding agent to one full leading thread on the full circumference.

Bolt	Grade	Torque (ft-lbs)
1/2" - 20	5	68-84
1/2" - 20	8	108-132



PROCEDURES FOR INSTALLATION OF POWER GEAR® LEVELING SYSTEM JACKS

TI-313

LEVELING AND STABILIZATION

Fastener Torque

All fasteners (bolts and nuts) must be certified Grade 5 or stronger. Torque fasteners to the proper lubricated specification as follows:

SAE O-Ring Boss Fitting Installation

All ports used on the valves and jacks are SAE O-ring boss ports. This style port utilizes an o-ring to seal the connection instead of metal to metal interference used on pipe fittings. The fittings should be installed as follows:

1. Straight fittings:
Install with socket or open end wrench. Tighten with torque wrench within the range specified in the chart below. **DO NOT** over-tighten fittings.
2. Elbows:
The elbow is designed to enable the final connection to point any direction.
 - A. Screw hex jam nut, washer, and o-ring back as far as possible. This will allow full thread engagement.
 - B. Screw fitting into female port until finger-tight.
 - C. Screw the body of the elbow counterclockwise to point in the desired direction.
 - D. Hold the body of the elbow and tighten with torque wrench within the range specified in the chart below. **DO NOT** over-tighten fittings.

LCI Install Torques, Hydraulic Products		
Connection	Specified Torque (in-lbs)	Specified Torque (ft-lbs)
JIC -4 (7/16-20)	130-150	11-13
JIC -6 (9/16-18)	235-265	20-22
SAE (ORB) -4 (7/16-20)	156-195	13-16
SAE (ORB) -8 (3/4-16)	264-330	22-28
SAE (ORB) -10 (7/8-14)	528-660	44-55
ORFS -4 (9/16-18)	216-270	18-23
ORFS -6 (11/16-16)	348-435	29-36
ORFS -8 (13/16-16)	492-615	41-51

As a supplier of components to the RV industry, safety, education and customer satisfaction are our primary concerns. Should you have any questions, please do not hesitate to contact us at (574) 537-8900 or by email at customerservice@lci1.com. Self-help tips, technical documents, product videos and a training class schedule are available at lci1.com or by downloading the MyLCI app.